



**Archdiocese of St. Louis**  
**Reclamation Center**  
**Catalog Category**

Office of Sacred Worship  
 Reclamation Center  
 reclamation@archstl.org  
 314.792.6461

12/1/2021

Category Vase

**Identification** 213  
**Category** Vase  
**Description** Vase  
**Size** 13" x 6 1/2"  
**Material** Brass  
**Color** Brass  
**Condition** 5 *Lowest to Highest (1= poor, 10 = Excellent)*  
**Item Value** \$0.50

---

**Identification** 214  
**Category** Vase  
**Description** Vase  
**Size** 13" x 6 1/2"  
**Material** Brass  
**Color** Brass  
**Condition** 4 *Lowest to Highest (1= poor, 10 = Excellent)*  
**Item Value** \$0.40

---

**Identification** 240  
**Category** Vase  
**Description** Vase  
**Size** Large  
**Material** Glass  
**Color**  
**Condition** 10 *Lowest to Highest (1= poor, 10 = Excellent)*  
**Item Value** \$1.00

---

**Identification** 242  
**Category** Vase  
**Description** Vase  
**Size** Small  
**Material** Glass  
**Color**  
**Condition** 8 *Lowest to Highest (1= poor, 10 = Excellent)*  
**Item Value** \$0.80




---

**Identification** 407  
**Category** Vase  
**Description** Vase  
**Size** 9 1/2"  
**Material** Brass  
**Color** Brass  
**Condition** 8 *Lowest to Highest (1= poor, 10 = Excellent)*  
**Item Value** \$0.80

WE THANK YOU FOR YOUR GENEROSITY

Donations can be made payable to: RECLAMATION CENTER Mail Stop 100700 P.O. Box 953745 St. Louis, Mo. 63195-3745

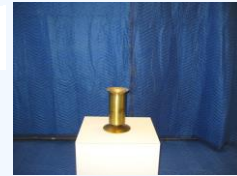
**Identification** 416  
**Category** Vase  
**Description** Vase  
**Size** 10"  
**Material** Brass  
**Color** Brass  
**Condition** 2 *Lowest to Highest (1= poor, 10 = Excellent)*  
**Item Value** \$0.20

**Identification** 418  
**Category** Vase  
**Description** Vase  
**Size** 15"  
**Material** Brass  
**Color** Brass  
**Condition** 8 *Lowest to Highest (1= poor, 10 = Excellent)*  
**Item Value** \$0.80

**Identification** 516  
**Category** Vase  
**Description** Vase  
**Size** 16" x 6" x 6"  
**Material** Brass  
**Color** Brass  
**Condition** 8 *Lowest to Highest (1= poor, 10 = Excellent)*  
**Item Value** \$0.80



**Identification** 518  
**Category** Vase  
**Description** Vase  
**Size** 8 1/2" x 6" x 6"  
**Material** Brass  
**Color** Brass  
**Condition** 8 *Lowest to Highest (1= poor, 10 = Excellent)*  
**Item Value** \$0.80



**Identification** 1235  
**Category** Vase  
**Description** Vase  
**Size** 12" x 5"  
**Material** Metal  
**Color** Silver  
**Condition** 8 *Lowest to Highest (1= poor, 10 = Excellent)*  
**Item Value** \$0.80



**Identification** 1236  
**Category** Vase  
**Description** Vase  
**Size** 8" x 3 1/2"  
**Material** Ceramic  
**Color** White  
**Condition** 8 *Lowest to Highest (1= poor, 10 = Excellent)*  
**Item Value** \$0.80



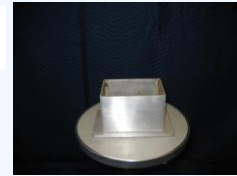
WE THANK YOU FOR YOUR GENEROSITY

Donations can be made payable to: RECLAMATION CENTER Mail Stop 100700 P.O. Box 953745 St. Louis, Mo. 63195-3745

**Identification** 1237  
**Category** Vase  
**Description** Vase  
**Size** 8" x 3 1/2"  
**Material** Ceramic  
**Color** White  
**Condition** 8 *Lowest to Highest (1= poor, 10 = Excellent)*  
**Item Value** \$0.80



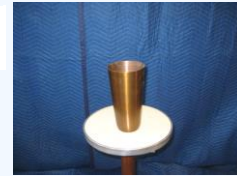
**Identification** 1239  
**Category** Vase  
**Description** Vase  
**Size** 8" x 4"  
**Material** Metal  
**Color** Silver  
**Condition** 8 *Lowest to Highest (1= poor, 10 = Excellent)*  
**Item Value** \$0.80



**Identification** 1240  
**Category** Vase  
**Description** Vase  
**Size** 12" x 4 1/2"  
**Material** Metal  
**Color** Brass  
**Condition** 8 *Lowest to Highest (1= poor, 10 = Excellent)*  
**Item Value** \$0.80



**Identification** 1241  
**Category** Vase  
**Description** Vase  
**Size** 8" 3/4"x5"  
**Material** Metal  
**Color** Brass  
**Condition** 8 *Lowest to Highest (1= poor, 10 = Excellent)*  
**Item Value** \$0.80



**Identification** 1309  
**Category** Vase  
**Description** Vase  
**Size** 4" x 16"  
**Material** Metal  
**Color** Gold  
**Condition** 10 *Lowest to Highest (1= poor, 10 = Excellent)*  
**Item Value** \$1.00



**Identification** 1310  
**Category** Vase  
**Description** Vase  
**Size** 6" x 16"  
**Material** Metal  
**Color** Gold  
**Condition** 10 *Lowest to Highest (1= poor, 10 = Excellent)*  
**Item Value** \$1.00



WE THANK YOU FOR YOUR GENEROSITY

Donations can be made payable to: RECLAMATION CENTER Mail Stop 100700 P.O. Box 953745 St. Louis, Mo. 63195-3745

**Identification** 1319  
**Category** Vase  
**Description** Vase  
**Size** 2 3/4" x 10"  
**Material** Wood  
**Color** Brown  
**Condition** 10 *Lowest to Highest (1= poor, 10 = Excellent)*  
**Item Value** \$1.00



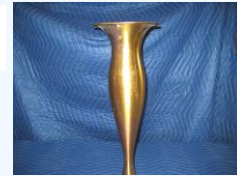
**Identification** 1422  
**Category** Vase  
**Description** Vase  
**Size** 10" x 5"  
**Material** Glass  
**Color** Clear  
**Condition** 10 *Lowest to Highest (1= poor, 10 = Excellent)*  
**Item Value** \$1.00



**Identification** 1424  
**Category** Vase  
**Description** Vase  
**Size** 10 1/2" x 5"  
**Material** Glass  
**Color** Clear  
**Condition** 10 *Lowest to Highest (1= poor, 10 = Excellent)*  
**Item Value** \$1.00



**Identification** 3170  
**Category** Vase  
**Description** Vase  
**Size** 7" x 20"  
**Material** Metal  
**Color** Brass  
**Condition** 8 *Lowest to Highest (1= poor, 10 = Excellent)*  
**Item Value** \$0.80



WE THANK YOU FOR YOUR GENEROSITY

Donations can be made payable to: RECLAMATION CENTER Mail Stop 100700 P.O. Box 953745 St. Louis, Mo. 63195-3745