



Archdiocese of St. Louis
Reclamation Center
Catalog Category

Office of Sacred Worship
 Reclamation Center
 reclamation@archstl.org
 314.792.6461

12/1/2021

Category Sconce

Identification 342
Category Sconce
Description Candle Sconce
Size 10 1/2" x 3"
Material Brass
Color Brass
Condition 7 *Lowest to Highest (1= poor, 10 = Excellent)*
Item Value \$70.00



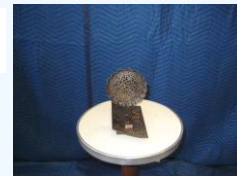
Identification 1246
Category Sconce
Description Sconce w/cross
Size 10" x 5"
Material Metal
Color Brass
Condition 8 *Lowest to Highest (1= poor, 10 = Excellent)*
Item Value \$80.00



Identification 1247
Category Sconce
Description Sconce
Size 9" x 5"
Material Metal
Color Brass
Condition 8 *Lowest to Highest (1= poor, 10 = Excellent)*
Item Value \$80.00



Identification 1248
Category Sconce
Description Sconce
Size 7" x 3 1/2"
Material Metal
Color Black
Condition 8 *Lowest to Highest (1= poor, 10 = Excellent)*
Item Value \$80.00



Identification 1250
Category Sconce
Description Sconce
Size 8" x 5"
Material Metal
Color Brass
Condition 8 *Lowest to Highest (1= poor, 10 = Excellent)*
Item Value \$80.00



WE THANK YOU FOR YOUR GENEROSITY

Donations can be made payable to: RECLAMATION CENTER Mail Stop 100700 P.O. Box 953745 St. Louis, Mo. 63195-3745

Identification 1251
Category Sconce
Description Sconce
Size 10" x 5"
Material Metal
Color Brass
Condition 8 *Lowest to Highest (1= poor, 10 = Excellent)*
Item Value \$80.00



Identification 1253
Category Sconce
Description Sconce
Size 6" x 3 1/2"
Material Metal
Color Brass
Condition 8 *Lowest to Highest (1= poor, 10 = Excellent)*
Item Value \$80.00



Identification 1255
Category Sconce
Description sconce
Size 8 1/2" x 5"
Material Metal
Color Brass
Condition 8 *Lowest to Highest (1= poor, 10 = Excellent)*
Item Value \$80.00



Identification 1297
Category Sconce
Description Wall Mount Shelf
Size 17" x 17 1/2"
Material Wood
Color Brown
Condition 10 *Lowest to Highest (1= poor, 10 = Excellent)*
Item Value \$100.00



Identification 1349
Category Sconce
Description Candle Sconce
Size 12" x 4"
Material Metal
Color Gold
Condition 9 *Lowest to Highest (1= poor, 10 = Excellent)*
Item Value \$90.00



Identification 1642
Category Sconce
Description Holy Water Font
Size 6" x 3"
Material Metal
Color Brass
Condition 5 *Lowest to Highest (1= poor, 10 = Excellent)*
Item Value \$50.00



WE THANK YOU FOR YOUR GENEROSITY

Donations can be made payable to: RECLAMATION CENTER Mail Stop 100700 P.O. Box 953745 St. Louis, Mo. 63195-3745

Identification 1647
Category Sconce
Description Holy Water, Sacred Heart
Size 6" x 3 1/2"
Material Ceramic
Color Mixed Color
Condition 10 *Lowest to Highest (1= poor, 10 = Excellent)*
Item Value \$100.00



Identification 1648
Category Sconce
Description Holy Water Font, Mary
Size 6" x 3 1/2"
Material Ceramic
Color Mixed Color
Condition 10 *Lowest to Highest (1= poor, 10 = Excellent)*
Item Value \$100.00



Identification 2266
Category Sconce
Description Sconce
Size 22 1/2" x 14"
Material Marble
Color White
Condition 7 *Lowest to Highest (1= poor, 10 = Excellent)*
Item Value \$70.00



WE THANK YOU FOR YOUR GENEROSITY

Donations can be made payable to: RECLAMATION CENTER Mail Stop 100700 P.O. Box 953745 St. Louis, Mo. 63195-3745