



**Archdiocese of St. Louis**  
**Reclamation Center**  
**Catalog Category**

Office of Sacred Worship  
 Reclamation Center  
 reclamation@archstl.org  
 314.792.6461

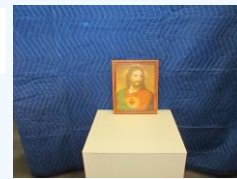
12/1/2021

Category Picture

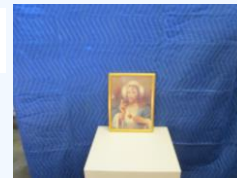
**Identification** 121  
**Category** Picture  
**Description** Jesus Christ Picture  
**Size** Medium  
**Material** Plastic  
**Color** Misc  
**Condition** 8 *Lowest to Highest (1= poor, 10 = Excellent)*  
**Item Value** \$60.00



**Identification** 124  
**Category** Picture  
**Description** Jesus Christ Picture  
**Size** 11" x 9"  
**Material** Wood  
**Color**  
**Condition** 8 *Lowest to Highest (1= poor, 10 = Excellent)*  
**Item Value** \$60.00



**Identification** 126  
**Category** Picture  
**Description** Sacred Heart Jesus Picture  
**Size** 12 3/4" x 9 3/4"  
**Material** Wood  
**Color**  
**Condition** 8 *Lowest to Highest (1= poor, 10 = Excellent)*  
**Item Value** \$60.00



**Identification** 127  
**Category** Picture  
**Description** Sacred Heart Mary Picture  
**Size** 13" x 9 3/4"  
**Material** Wood  
**Color**  
**Condition** 8 *Lowest to Highest (1= poor, 10 = Excellent)*  
**Item Value** \$60.00

**Identification** 128  
**Category** Picture  
**Description** Our Lady Of Guadalupe Picture  
**Size** 11 3/4" x 9 1/4"  
**Material** Wood  
**Color**  
**Condition** 8 *Lowest to Highest (1= poor, 10 = Excellent)*  
**Item Value** \$60.00

WE THANK YOU FOR YOUR GENEROSITY

Donations can be made payable to: RECLAMATION CENTER Mail Stop 100700 P.O. Box 953745 St. Louis, Mo. 63195-3745

**Identification** 129  
**Category** Picture  
**Description** Virgin Mary Child Jesus Picture  
**Size** 11 3/4" x 9 1/4"  
**Material** Wood  
**Color**  
**Condition** 8 *Lowest to Highest (1= poor, 10 = Excellent)*  
**Item Value** \$60.00



**Identification** 131  
**Category** Picture  
**Description** First Communion Picture  
**Size** 9 1/2" x 7"  
**Material** Wood  
**Color**  
**Condition** 8 *Lowest to Highest (1= poor, 10 = Excellent)*  
**Item Value** \$60.00



**Identification** 222  
**Category** Picture  
**Description** Sacred Heart Jesus Picture  
**Size**  
**Material** Paper  
**Color**  
**Condition** 10 *Lowest to Highest (1= poor, 10 = Excellent)*  
**Item Value** \$75.00

**Identification** 1476  
**Category** Picture  
**Description** Portrait of Pope Francis  
**Size** 25" x 31"  
**Material** Wood  
**Color** Misc  
**Condition** 10 *Lowest to Highest (1= poor, 10 = Excellent)*  
**Item Value** \$75.00



**Identification** 1477  
**Category** Picture  
**Description** Portrait of Archbishop Carlson  
**Size** 22" x 18"  
**Material** Wood  
**Color** Misc  
**Condition** 10 *Lowest to Highest (1= poor, 10 = Excellent)*  
**Item Value** \$75.00



**Identification** 1482  
**Category** Picture  
**Description** Wall Hanger of Christ  
**Size** 33" x 40"  
**Material** Metal  
**Color** Brass  
**Condition** 7 *Lowest to Highest (1= poor, 10 = Excellent)*  
**Item Value** \$52.50

WE THANK YOU FOR YOUR GENEROSITY

Donations can be made payable to: RECLAMATION CENTER Mail Stop 100700 P.O. Box 953745 St. Louis, Mo. 63195-3745

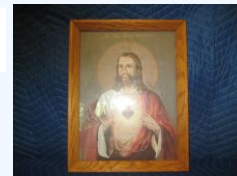
**Identification** 1772  
**Category** Picture  
**Description** Cure of Ars  
**Size** 12 1/2" x 11 1/2"  
**Material** Paper  
**Color** Black/White  
**Condition** 9 *Lowest to Highest (1= poor, 10 = Excellent)*  
**Item Value** \$67.50



**Identification** 2184  
**Category** Picture  
**Description** Sacred Heart of Jesus print  
**Size** 25 1/2" x 13 1/2"  
**Material** Paper  
**Color** Mixed Color  
**Condition** 7 *Lowest to Highest (1= poor, 10 = Excellent)*  
**Item Value** \$52.50



**Identification** 2185  
**Category** Picture  
**Description** Sacred Heart of Jesus print  
**Size** 14" x 18"  
**Material** Paper  
**Color** Mixed Color  
**Condition** 8 *Lowest to Highest (1= poor, 10 = Excellent)*  
**Item Value** \$60.00



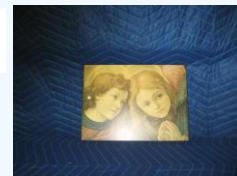
**Identification** 2186  
**Category** Picture  
**Description** Sacred Heart of Jesus Print  
**Size** 11" x 14"  
**Material** Paper  
**Color** Mixed Color  
**Condition** 10 *Lowest to Highest (1= poor, 10 = Excellent)*  
**Item Value** \$75.00



**Identification** 2190  
**Category** Picture  
**Description** St. Francis Assisi print  
**Size** 9" x 10 1/2"  
**Material** Paper  
**Color** Mixed Color  
**Condition** 8 *Lowest to Highest (1= poor, 10 = Excellent)*  
**Item Value** \$60.00



**Identification** 2191  
**Category** Picture  
**Description** Angels print  
**Size** 9" x 12"  
**Material** Paper  
**Color** Mixed Color  
**Condition** 7 *Lowest to Highest (1= poor, 10 = Excellent)*  
**Item Value** \$52.50



WE THANK YOU FOR YOUR GENEROSITY

Donations can be made payable to: RECLAMATION CENTER Mail Stop 100700 P.O. Box 953745 St. Louis, Mo. 63195-3745

**Identification** 2193  
**Category** Picture  
**Description** Our Lady of Perpetual Help print  
**Size** 9 1/4" x 12"  
**Material** Paper  
**Color** Mixed Color  
**Condition** 7 *Lowest to Highest (1= poor, 10 = Excellent)*  
**Item Value** \$52.50



**Identification** 2194  
**Category** Picture  
**Description** Our Lady print  
**Size** 11 1/2" x 14 1/2"  
**Material** Paper  
**Color** Mixed Color  
**Condition** 8 *Lowest to Highest (1= poor, 10 = Excellent)*  
**Item Value** \$60.00



**Identification** 2195  
**Category** Picture  
**Description** Our Lady print  
**Size** 11 1/2" x 14 1/2"  
**Material** Paper  
**Color** Mixed Color  
**Condition** 8 *Lowest to Highest (1= poor, 10 = Excellent)*  
**Item Value** \$60.00



**Identification** 2196  
**Category** Picture  
**Description** Mother Theresa of Calcutta  
**Size** 17" x 14"  
**Material** Paper  
**Color** Mixed Color  
**Condition** 10 *Lowest to Highest (1= poor, 10 = Excellent)*  
**Item Value** \$75.00



**Identification** 2197  
**Category** Picture  
**Description** Mother Theresa of Calcutta  
**Size** 13 1/2" x 16"  
**Material** Paper  
**Color** Mixed Color  
**Condition** 10 *Lowest to Highest (1= poor, 10 = Excellent)*  
**Item Value** \$75.00



**Identification** 2199  
**Category** Picture  
**Description** Our Lady of Guadalupe  
**Size** 9" x 11"  
**Material** Paper  
**Color** Mixed Color  
**Condition** 10 *Lowest to Highest (1= poor, 10 = Excellent)*  
**Item Value** \$75.00



WE THANK YOU FOR YOUR GENEROSITY

Donations can be made payable to: RECLAMATION CENTER Mail Stop 100700 P.O. Box 953745 St. Louis, Mo. 63195-3745

**Identification** 2200  
**Category** Picture  
**Description** Cardinal Rigali photo  
**Size** 15" x 12"  
**Material** Paper  
**Color** Mixed Color  
**Condition** 10 *Lowest to Highest (1= poor, 10 = Excellent)*  
**Item Value** \$75.00



**Identification** 2202  
**Category** Picture  
**Description** Our Lady of Fatima picture  
**Size** 9" x 11"  
**Material** Paper  
**Color** Mixed Color  
**Condition** 10 *Lowest to Highest (1= poor, 10 = Excellent)*  
**Item Value** \$75.00



**Identification** 2203  
**Category** Picture  
**Description** Our Lady of Fatima picture  
**Size** 13 1/2" x 15 1/2"  
**Material** Paper  
**Color** Mixed Color  
**Condition** 10 *Lowest to Highest (1= poor, 10 = Excellent)*  
**Item Value** \$75.00



**Identification** 2206  
**Category** Picture  
**Description** Resurrection of our Lord print  
**Size** 13" x 10 1/2"  
**Material** Paper  
**Color** Mixed Color  
**Condition** 10 *Lowest to Highest (1= poor, 10 = Excellent)*  
**Item Value** \$75.00



**Identification** 2207  
**Category** Picture  
**Description** Our Lady of Perpetual Help  
**Size** 16" x 14"  
**Material** Paper  
**Color** Mixed Color  
**Condition** 9 *Lowest to Highest (1= poor, 10 = Excellent)*  
**Item Value** \$67.50



**Identification** 2208  
**Category** Picture  
**Description** Crucified Christ print  
**Size** 12" x 15"  
**Material** Paper  
**Color** Mixed Color  
**Condition** 10 *Lowest to Highest (1= poor, 10 = Excellent)*  
**Item Value** \$75.00



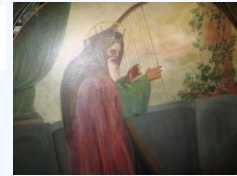
WE THANK YOU FOR YOUR GENEROSITY

Donations can be made payable to: RECLAMATION CENTER Mail Stop 100700 P.O. Box 953745 St. Louis, Mo. 63195-3745

**Identification** 2324  
**Category** Picture  
**Description** St. Cecilia  
**Size** 70"  
**Material** Canvas  
**Color** Mixed Color  
**Condition** 8 *Lowest to Highest (1= poor, 10 = Excellent)*  
**Item Value** \$60.00



**Identification** 2325  
**Category** Picture  
**Description** King David  
**Size** 70"  
**Material** Canvas  
**Color** Mixed Color  
**Condition** 8 *Lowest to Highest (1= poor, 10 = Excellent)*  
**Item Value** \$60.00



**Identification** 2408  
**Category** Picture  
**Description** Archbishop Rozanski  
**Size** 12" x 15"  
**Material** Paper  
**Color** Mixed Color  
**Condition** 10 *Lowest to Highest (1= poor, 10 = Excellent)*  
**Item Value** \$75.00



**Identification** 2717  
**Category** Picture  
**Description** Immaculate Heart of Mary  
**Size** 8" x 10"  
**Material** Paper  
**Color** Mixed Color  
**Condition** 10 *Lowest to Highest (1= poor, 10 = Excellent)*  
**Item Value** \$75.00



**Identification** 2718  
**Category** Picture  
**Description** Sacred Heart of Jesus  
**Size** 8" x 10"  
**Material** Paper  
**Color** Mixed Color  
**Condition** 10 *Lowest to Highest (1= poor, 10 = Excellent)*  
**Item Value** \$75.00



**Identification** 2719  
**Category** Picture  
**Description** Last Supper  
**Size** 8" x 10"  
**Material** Paper  
**Color** Mixed Color  
**Condition** 10 *Lowest to Highest (1= poor, 10 = Excellent)*  
**Item Value** \$75.00



WE THANK YOU FOR YOUR GENEROSITY

Donations can be made payable to: RECLAMATION CENTER Mail Stop 100700 P.O. Box 953745 St. Louis, Mo. 63195-3745

**Identification** 2724  
**Category** Picture  
**Description** Pope John Paul - Papal Visit to Saint Louis  
**Size** 17" x 14"  
**Material** Paper  
**Color** Mixed Color  
**Condition** 10 *Lowest to Highest (1= poor, 10 = Excellent)*  
**Item Value** \$75.00



**Identification** 2725  
**Category** Picture  
**Description** St. Clare, St Bernard, St Francis  
**Size** 17" x 14"  
**Material** Paper  
**Color** Mixed Color  
**Condition** 10 *Lowest to Highest (1= poor, 10 = Excellent)*  
**Item Value** \$75.00



**Identification** 2726  
**Category** Picture  
**Description** Mary  
**Size** 14" x 18"  
**Material** Paper  
**Color** Mixed Color  
**Condition** 10 *Lowest to Highest (1= poor, 10 = Excellent)*  
**Item Value** \$75.00



**Identification** 2728  
**Category** Picture  
**Description** Assi - Santa Marie deglie Angelic  
**Size** 18" x 7"  
**Material** Paper  
**Color** Mixed Color  
**Condition** 10 *Lowest to Highest (1= poor, 10 = Excellent)*  
**Item Value** \$75.00



**Identification** 2729  
**Category** Picture  
**Description** Foot Print in the Sand  
**Size** 8 1/2" x 10 1/2"  
**Material** Wood  
**Color** Brown  
**Condition** 10 *Lowest to Highest (1= poor, 10 = Excellent)*  
**Item Value** \$75.00



**Identification** 2731  
**Category** Picture  
**Description** Pope John Paul II Papal Visit Banner  
**Size** 29 3/4" x 82"  
**Material** Plastic  
**Color** Mixed Color  
**Condition** 10 *Lowest to Highest (1= poor, 10 = Excellent)*  
**Item Value** \$75.00



WE THANK YOU FOR YOUR GENEROSITY

Donations can be made payable to: RECLAMATION CENTER Mail Stop 100700 P.O. Box 953745 St. Louis, Mo. 63195-3745

**Identification** 2733  
**Category** Picture  
**Description** Christ  
**Size** 19" x 13 1/2"  
**Material** Paper  
**Color** Mixed Color  
**Condition** 8 *Lowest to Highest (1= poor, 10 = Excellent)*  
**Item Value** \$60.00



**Identification** 2755  
**Category** Picture  
**Description** Jesus Christ  
**Size** 9" x 15"  
**Material** Wood  
**Color** Brown  
**Condition** 9 *Lowest to Highest (1= poor, 10 = Excellent)*  
**Item Value** \$67.50



**Identification** 2761  
**Category** Picture  
**Description** Presentation of Jesus in the Temple  
**Size** 10 1/2" x 7"  
**Material** Paper  
**Color** Mixed Color  
**Condition** 10 *Lowest to Highest (1= poor, 10 = Excellent)*  
**Item Value** \$75.00



**Identification** 2762  
**Category** Picture  
**Description** Madonna & Child print  
**Size** 8" x 10"  
**Material** Paper  
**Color** Mixed Color  
**Condition** 10 *Lowest to Highest (1= poor, 10 = Excellent)*  
**Item Value** \$75.00



**Identification** 2763  
**Category** Picture  
**Description** Madona and Child Print  
**Size** 12" x 10"  
**Material** Paper  
**Color** Mixed Color  
**Condition** 9 *Lowest to Highest (1= poor, 10 = Excellent)*  
**Item Value** \$67.50



**Identification** 2768  
**Category** Picture  
**Description** Jesus Print  
**Size** 28" x 24"  
**Material** Paper  
**Color** Mixed Color  
**Condition** 10 *Lowest to Highest (1= poor, 10 = Excellent)*  
**Item Value** \$75.00



WE THANK YOU FOR YOUR GENEROSITY

Donations can be made payable to: RECLAMATION CENTER Mail Stop 100700 P.O. Box 953745 St. Louis, Mo. 63195-3745



**Identification** 2769  
**Category** Picture  
**Description** Holy Family Painting  
**Size** 34" x 41"  
**Material** Paper  
**Color** Mixed Color  
**Condition** 9 *Lowest to Highest (1= poor, 10 = Excellent)*  
**Item Value** \$67.50



**Identification** 2781  
**Category** Picture  
**Description** Mary  
**Size** 8" x 10"  
**Material** Wood  
**Color** Brass  
**Condition** 10 *Lowest to Highest (1= poor, 10 = Excellent)*  
**Item Value** \$75.00



**Identification** 2852  
**Category** Picture  
**Description** Last Supper Picture  
**Size** 22" x 14"  
**Material** Paper  
**Color** Mixed Color  
**Condition** 10 *Lowest to Highest (1= poor, 10 = Excellent)*  
**Item Value** \$75.00



**Identification** 2990  
**Category** Picture  
**Description** Last Supper  
**Size** 21 1/2" x 18"  
**Material** Paper  
**Color** Mixed Color  
**Condition** 10 *Lowest to Highest (1= poor, 10 = Excellent)*  
**Item Value** \$75.00



**Identification** 3010  
**Category** Picture  
**Description** The Annunciation  
**Size** 12" x 15"  
**Material** Mixed Color  
**Color** Mixed Color  
**Condition** 9 *Lowest to Highest (1= poor, 10 = Excellent)*  
**Item Value** \$67.50

**Identification** 3011  
**Category** Picture  
**Description** Mary with Child  
**Size** 5 1/2" x 7 1/4"  
**Material** Mixed Color  
**Color** Mixed Color  
**Condition** 10 *Lowest to Highest (1= poor, 10 = Excellent)*  
**Item Value** \$75.00



WE THANK YOU FOR YOUR GENEROSITY

Donations can be made payable to: RECLAMATION CENTER Mail Stop 100700 P.O. Box 953745 St. Louis, Mo. 63195-3745

**Identification** 3012  
**Category** Picture  
**Description** St Francis of Assisi  
**Size** 8" x 10"  
**Material**  
**Color** Mixed Color  
**Condition** 10 *Lowest to Highest (1= poor, 10 = Excellent)*  
**Item Value** \$75.00

---

**Identification** 3013  
**Category** Picture  
**Description** St John Neumann  
**Size** 5" x 7"  
**Material**  
**Color**  
**Condition** 9 *Lowest to Highest (1= poor, 10 = Excellent)*  
**Item Value** \$67.50

---



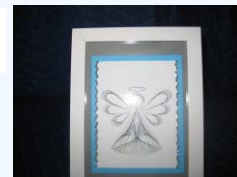
**Identification** 3014  
**Category** Picture  
**Description** St Francis Prayer  
**Size** 5" x 7"  
**Material**  
**Color**  
**Condition** 10 *Lowest to Highest (1= poor, 10 = Excellent)*  
**Item Value** \$75.00

---



**Identification** 3015  
**Category** Picture  
**Description** Angel  
**Size** 6" x 8 1/4"  
**Material**  
**Color**  
**Condition** 10 *Lowest to Highest (1= poor, 10 = Excellent)*  
**Item Value** \$75.00

---



**Identification** 3016  
**Category** Picture  
**Description** Peace Prayer  
**Size** 9" x 7"  
**Material**  
**Color**  
**Condition** 9 *Lowest to Highest (1= poor, 10 = Excellent)*  
**Item Value** \$67.50

---



**Identification** 3018  
**Category** Picture  
**Description** Sacred Heart of Jesus  
**Size** 8" x 8"  
**Material**  
**Color**  
**Condition** 10 *Lowest to Highest (1= poor, 10 = Excellent)*  
**Item Value** \$75.00

---



WE THANK YOU FOR YOUR GENEROSITY

Donations can be made payable to: RECLAMATION CENTER Mail Stop 100700 P.O. Box 953745 St. Louis, Mo. 63195-3745

**Identification** 3020  
**Category** Picture  
**Description** Jesus Christ  
**Size** 8 1/2" x 7"  
**Material**  
**Color**  
**Condition** 8 *Lowest to Highest (1= poor, 10 = Excellent)*  
**Item Value** \$60.00

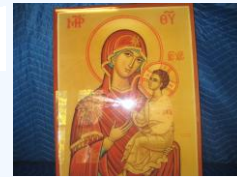


**Identification** 3028  
**Category** Picture  
**Description** Priest Parayer  
**Size** 12" x 13"  
**Material**  
**Color**  
**Condition** 9 *Lowest to Highest (1= poor, 10 = Excellent)*  
**Item Value** \$67.50

**Identification** 3029  
**Category** Picture  
**Description** Priest Prayer  
**Size** 8" x 10"  
**Material**  
**Color**  
**Condition** 9 *Lowest to Highest (1= poor, 10 = Excellent)*  
**Item Value** \$67.50



**Identification** 3033  
**Category** Picture  
**Description** Our Lady of Peperual Help  
**Size** 23" x 18"  
**Material** Paper  
**Color** Mixed Color  
**Condition** 10 *Lowest to Highest (1= poor, 10 = Excellent)*  
**Item Value** \$75.00



**Identification** 3055  
**Category** Picture  
**Description** Pope John Paul II  
**Size** 7 1/2" x 6"  
**Material** Paper  
**Color** Mixed Color  
**Condition** 10 *Lowest to Highest (1= poor, 10 = Excellent)*  
**Item Value** \$75.00



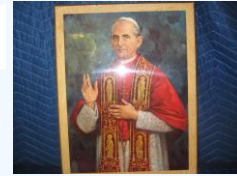
**Identification** 3057  
**Category** Picture  
**Description** Archbishop Carlson  
**Size** 17" x 14"  
**Material** Paper  
**Color** Mixed Color  
**Condition** 10 *Lowest to Highest (1= poor, 10 = Excellent)*  
**Item Value** \$75.00



WE THANK YOU FOR YOUR GENEROSITY

Donations can be made payable to: RECLAMATION CENTER Mail Stop 100700 P.O. Box 953745 St. Louis, Mo. 63195-3745

**Identification** 3058  
**Category** Picture  
**Description** Pope Pius VI  
**Size** 14" x 18"  
**Material** Paper  
**Color** Mixed Color  
**Condition** 10 *Lowest to Highest (1= poor, 10 = Excellent)*  
**Item Value** \$75.00



**Identification** 3059  
**Category** Picture  
**Description** Cardinal Rigali  
**Size** 13 1/2" x 14 1/2"  
**Material** Paper  
**Color** Mixed Color  
**Condition** 8 *Lowest to Highest (1= poor, 10 = Excellent)*  
**Item Value** \$60.00



**Identification** 3060  
**Category** Picture  
**Description** Cardinal Rigali  
**Size** 12 3/4" x 14 3/4"  
**Material** Paper  
**Color** Mixed Color  
**Condition** 10 *Lowest to Highest (1= poor, 10 = Excellent)*  
**Item Value** \$75.00



**Identification** 3061  
**Category** Picture  
**Description** Pope Francis  
**Size** 8" x 10"  
**Material** Paper  
**Color** Mixed Color  
**Condition** 10 *Lowest to Highest (1= poor, 10 = Excellent)*  
**Item Value** \$75.00



**Identification** 3062  
**Category** Picture  
**Description** Pope John Paul II  
**Size** 11" x 13"  
**Material** Paper  
**Color** Mixed Color  
**Condition** 10 *Lowest to Highest (1= poor, 10 = Excellent)*  
**Item Value** \$75.00



**Identification** 3063  
**Category** Picture  
**Description** Pope Francis photo  
**Size** 11" x 14"  
**Material** Paper  
**Color** Mixed Color  
**Condition** 8 *Lowest to Highest (1= poor, 10 = Excellent)*  
**Item Value** \$60.00



WE THANK YOU FOR YOUR GENEROSITY

Donations can be made payable to: RECLAMATION CENTER Mail Stop 100700 P.O. Box 953745 St. Louis, Mo. 63195-3745

**Identification** 3064  
**Category** Picture  
**Description** St Joseph The Worker  
**Size** 26" x 13"  
**Material** Paper  
**Color** Mixed Color  
**Condition** 10 *Lowest to Highest (1= poor, 10 = Excellent)*  
**Item Value** \$75.00



**Identification** 3065  
**Category** Picture  
**Description** St Franics of Assisi  
**Size** 28 3/4" x x 20 1/2"  
**Material** Paper  
**Color** Mixed Color  
**Condition** 10 *Lowest to Highest (1= poor, 10 = Excellent)*  
**Item Value** \$75.00

**Identification** 3066  
**Category** Picture  
**Description** Pope John Paul II  
**Size** 8" x 10"  
**Material** Paper  
**Color** Mixed Color  
**Condition** 10 *Lowest to Highest (1= poor, 10 = Excellent)*  
**Item Value** \$75.00



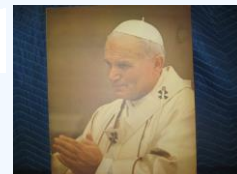
**Identification** 3067  
**Category** Picture  
**Description** Pope Benedict  
**Size** 18" x 22"  
**Material** Paper  
**Color** Mixed Color  
**Condition** 8 *Lowest to Highest (1= poor, 10 = Excellent)*  
**Item Value** \$60.00



**Identification** 3068  
**Category** Picture  
**Description** Pope Benedict  
**Size** 18 1/2" x 23"  
**Material** Paper  
**Color** Mixed Color  
**Condition** 9 *Lowest to Highest (1= poor, 10 = Excellent)*  
**Item Value** \$67.50



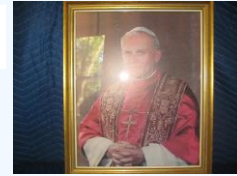
**Identification** 3069  
**Category** Picture  
**Description** Pope John Paul II  
**Size** 16" x 20"  
**Material** Paper  
**Color** Mixed Color  
**Condition** 8 *Lowest to Highest (1= poor, 10 = Excellent)*  
**Item Value** \$60.00



WE THANK YOU FOR YOUR GENEROSITY

Donations can be made payable to: RECLAMATION CENTER Mail Stop 100700 P.O. Box 953745 St. Louis, Mo. 63195-3745

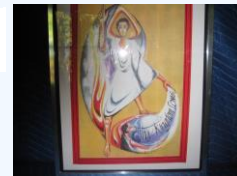
**Identification** 3070  
**Category** Picture  
**Description** Pope John Paul II  
**Size** 18" x 22 1/2"  
**Material** Paper  
**Color** Mixed Color  
**Condition** 10 *Lowest to Highest (1= poor, 10 = Excellent)*  
**Item Value** \$75.00



**Identification** 3071  
**Category** Picture  
**Description** Seine Madonna  
**Size** 23" x 29"  
**Material** Paper  
**Color** Mixed Color  
**Condition** 8 *Lowest to Highest (1= poor, 10 = Excellent)*  
**Item Value** \$60.00



**Identification** 3072  
**Category** Picture  
**Description** One Body in Christ poster  
**Size** 32" x 24"  
**Material** Paper  
**Color** Mixed Color  
**Condition** 7 *Lowest to Highest (1= poor, 10 = Excellent)*  
**Item Value** \$52.50



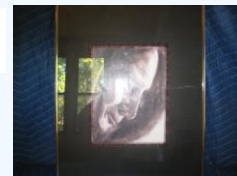
**Identification** 3073  
**Category** Picture  
**Description** Jean Eudes, Prophete Du Coeur  
**Size** 25" x 14"  
**Material** Paper  
**Color** Mixed Color  
**Condition** 9 *Lowest to Highest (1= poor, 10 = Excellent)*  
**Item Value** \$67.50



**Identification** 3074  
**Category** Picture  
**Description** Jean Eudes, Les Pauvres  
**Size** 25" x 14"  
**Material** Paper  
**Color** Mixed Color  
**Condition** 10 *Lowest to Highest (1= poor, 10 = Excellent)*  
**Item Value** \$75.00



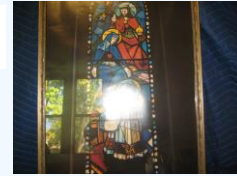
**Identification** 3075  
**Category** Picture  
**Description** Risen Christ "Thy Kingdom Come"  
**Size** 16 1/2" x 20 1/2"  
**Material** Paper  
**Color** Mixed Color  
**Condition** 10 *Lowest to Highest (1= poor, 10 = Excellent)*  
**Item Value** \$75.00



WE THANK YOU FOR YOUR GENEROSITY

Donations can be made payable to: RECLAMATION CENTER Mail Stop 100700 P.O. Box 953745 St. Louis, Mo. 63195-3745

**Identification** 3076  
**Category** Picture  
**Description** Risen Christ "Thy Kingdom Come"  
**Size** 24 1/2" x 18"  
**Material** Paper  
**Color** Mixed Color  
**Condition** 7 *Lowest to Highest (1= poor, 10 = Excellent)*  
**Item Value** \$52.50



**Identification** 3077  
**Category** Picture  
**Description** Good Shepherd  
**Size** 32 1/2" x 26 1/2"  
**Material** Paper  
**Color** Mixed Color  
**Condition** 8 *Lowest to Highest (1= poor, 10 = Excellent)*  
**Item Value** \$60.00



**Identification** 3078  
**Category** Picture  
**Description** Images of Mary  
**Size** 25 1/2" x 20 1/2"  
**Material** Paper  
**Color** Mixed Color  
**Condition** 10 *Lowest to Highest (1= poor, 10 = Excellent)*  
**Item Value** \$75.00



**Identification** 3079  
**Category** Picture  
**Description** Crucifixion by Thomas Mobeck Hoffman  
**Size** 24" x 20"  
**Material** Paper  
**Color** Mixed Color  
**Condition** 10 *Lowest to Highest (1= poor, 10 = Excellent)*  
**Item Value** \$75.00



**Identification** 3081  
**Category** Picture  
**Description** Pieta  
**Size** 19 1/2" x 16 1/2"  
**Material** Paper  
**Color** Mixed Color  
**Condition** 8 *Lowest to Highest (1= poor, 10 = Excellent)*  
**Item Value** \$60.00



**Identification** 3082  
**Category** Picture  
**Description** Christ in Classroom  
**Size** 40 1/2" x 28"  
**Material** Paper  
**Color** Mixed Color  
**Condition** 10 *Lowest to Highest (1= poor, 10 = Excellent)*  
**Item Value** \$75.00



WE THANK YOU FOR YOUR GENEROSITY

Donations can be made payable to: RECLAMATION CENTER Mail Stop 100700 P.O. Box 953745 St. Louis, Mo. 63195-3745

**Identification** 3083  
**Category** Picture  
**Description** Portrait of Christ  
**Size**  
**Material** Paper  
**Color** Mixed Color  
**Condition** 10 *Lowest to Highest (1= poor, 10 = Excellent)*  
**Item Value** \$75.00



**Identification** 3084  
**Category** Picture  
**Description** Profile of Pope John Paul II  
**Size** 16" x 20"  
**Material** Paper  
**Color** Mixed Color  
**Condition** 10 *Lowest to Highest (1= poor, 10 = Excellent)*  
**Item Value** \$75.00



**Identification** 3228  
**Category** Picture  
**Description** Our Lady of Perpetual Help  
**Size** 5" x 6"  
**Material** Paper  
**Color** Mixed Color  
**Condition** 9 *Lowest to Highest (1= poor, 10 = Excellent)*  
**Item Value** \$67.50



**Identification** 3275  
**Category** Picture  
**Description** Shroud Portrait  
**Size** 13" x 16"  
**Material** Paper  
**Color** Mixed Color  
**Condition** 10 *Lowest to Highest (1= poor, 10 = Excellent)*  
**Item Value** \$75.00



**Identification** 3279  
**Category** Picture  
**Description** St. Francis of Assisi  
**Size** 4" x 6"  
**Material** Paper  
**Color** Brown  
**Condition** 10 *Lowest to Highest (1= poor, 10 = Excellent)*  
**Item Value** \$75.00



**Identification** 3280  
**Category** Picture  
**Description** St Clare of Assisi  
**Size** 4" x 6"  
**Material** Paper  
**Color** Brown  
**Condition** 10 *Lowest to Highest (1= poor, 10 = Excellent)*  
**Item Value** \$75.00



WE THANK YOU FOR YOUR GENEROSITY

Donations can be made payable to: RECLAMATION CENTER Mail Stop 100700 P.O. Box 953745 St. Louis, Mo. 63195-3745



**Identification** 3281  
**Category** Picture  
**Description** Our Lady of Perpetual Help  
**Size** 8" x 10"  
**Material** Paper  
**Color** Brown  
**Condition** 10 *Lowest to Highest (1= poor, 10 = Excellent)*  
**Item Value** \$75.00



**Identification** 3282  
**Category** Picture  
**Description** Our Lady of Perpetual Help  
**Size** 13 3/4" x 11"  
**Material** Paper  
**Color** Brown  
**Condition** 8 *Lowest to Highest (1= poor, 10 = Excellent)*  
**Item Value** \$60.00



**Identification** 3285  
**Category** Picture  
**Description** St Clare of Assisi  
**Size** 14 1/2" x 23"  
**Material** Paper  
**Color**  
**Condition** 10 *Lowest to Highest (1= poor, 10 = Excellent)*  
**Item Value** \$75.00



**Identification** 3286  
**Category** Picture  
**Description** St Clare of Assisi  
**Size** 16 1/2" x 20 1/2"  
**Material** Paper  
**Color**  
**Condition** 10 *Lowest to Highest (1= poor, 10 = Excellent)*  
**Item Value** \$75.00



**Identification** 3287  
**Category** Picture  
**Description** Our Lady of Perpetual Help  
**Size** 16" x 20"  
**Material** Paper  
**Color**  
**Condition** 10 *Lowest to Highest (1= poor, 10 = Excellent)*  
**Item Value** \$75.00



**Identification** 3288  
**Category** Picture  
**Description** St. Clare Receiving Habit  
**Size** 16" x 20"  
**Material** Paper  
**Color**  
**Condition** 10 *Lowest to Highest (1= poor, 10 = Excellent)*  
**Item Value** \$75.00



WE THANK YOU FOR YOUR GENEROSITY

Donations can be made payable to: RECLAMATION CENTER Mail Stop 100700 P.O. Box 953745 St. Louis, Mo. 63195-3745