



Archdiocese of St. Louis
Reclamation Center
Catalog Category

Office of Sacred Worship
 Reclamation Center
 reclamation@archstl.org
 314.792.6461

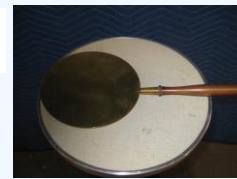
11/17/2021

Category Paten

Identification 1321
Category Paten
Description Paten Holder
Size 10" x 4 3/4"
Material Metal
Color Silver
Condition 10 *Lowest to Highest (1= poor, 10 = Excellent)*
Item Value \$125.00



Identification 1328
Category Paten
Description Paten
Size 14 1/4" x 7"
Material Metal
Color Gold
Condition 9 *Lowest to Highest (1= poor, 10 = Excellent)*
Item Value \$112.50



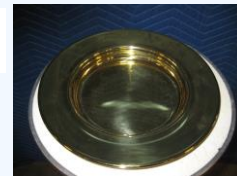
Identification 1331
Category Paten
Description Paten Bowl
Size 10" x 2"
Material Metal
Color Gold
Condition 10 *Lowest to Highest (1= poor, 10 = Excellent)*
Item Value \$125.00



Identification 1474
Category Paten
Description Paten
Size
Material Metal
Color Brass
Condition 6 *Lowest to Highest (1= poor, 10 = Excellent)*
Item Value \$75.00



Identification 1690
Category Paten
Description Paten
Size
Material Metal
Color Gold
Condition 10 *Lowest to Highest (1= poor, 10 = Excellent)*
Item Value \$125.00



WE THANK YOU FOR YOUR GENEROSITY

Donations can be made payable to: RECLAMATION CENTER Mail Stop 100700 P.O. Box 953745 St. Louis, Mo. 63195-3745

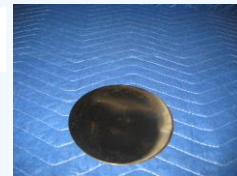
Identification 1693
Category Paten
Description Paten
Size 7 1/2"
Material Metal
Color Gold
Condition 9 *Lowest to Highest (1= poor, 10 = Excellent)*
Item Value \$112.50



Identification 1921
Category Paten
Description Communion Paten
Size 7"
Material Metal
Color Gold
Condition 10 *Lowest to Highest (1= poor, 10 = Excellent)*
Item Value \$125.00



Identification 1922
Category Paten
Description Paten
Size 5 1/2"
Material Metal
Color Gold
Condition Various *Lowest to Highest (1= poor, 10 = Excellent)*
Item Value \$62.50



Identification 1923
Category Paten
Description Paten
Size 7"
Material Metal
Color Silver
Condition 7 *Lowest to Highest (1= poor, 10 = Excellent)*
Item Value \$87.50



Identification 1924
Category Paten
Description Paten
Size 5"
Material Metal
Color Gold
Condition 4 *Lowest to Highest (1= poor, 10 = Excellent)*
Item Value \$50.00



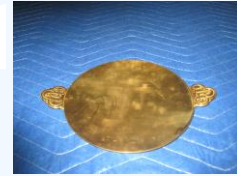
Identification 1925
Category Paten
Description Paten
Size 7"
Material Metal
Color Gold
Condition 4 *Lowest to Highest (1= poor, 10 = Excellent)*
Item Value \$50.00



WE THANK YOU FOR YOUR GENEROSITY

Donations can be made payable to: RECLAMATION CENTER Mail Stop 100700 P.O. Box 953745 St. Louis, Mo. 63195-3745

Identification 1926
Category Paten
Description Paten
Size 7"
Material Metal
Color Gold
Condition 8 *Lowest to Highest (1= poor, 10 = Excellent)*
Item Value \$100.00



Identification 1927
Category Paten
Description Paten
Size 5"
Material Metal
Color Gold
Condition Various *Lowest to Highest (1= poor, 10 = Excellent)*
Item Value \$62.50



Identification 1928
Category Paten
Description Paten
Size 6"
Material Metal
Color Gold
Condition Various *Lowest to Highest (1= poor, 10 = Excellent)*
Item Value \$62.50



Identification 1929
Category Paten
Description Paten
Size 4"
Material Metal
Color Gold
Condition 3 *Lowest to Highest (1= poor, 10 = Excellent)*
Item Value \$37.50



Identification 1931
Category Paten
Description Paten
Size 4 1/2"
Material Metal
Color Gold
Condition Various *Lowest to Highest (1= poor, 10 = Excellent)*
Item Value \$62.50



Identification 1932
Category Paten
Description Paten
Size 5 1/2"
Material Metal
Color Gold
Condition 4 *Lowest to Highest (1= poor, 10 = Excellent)*
Item Value \$50.00



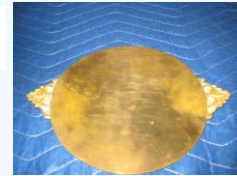
WE THANK YOU FOR YOUR GENEROSITY

Donations can be made payable to: RECLAMATION CENTER Mail Stop 100700 P.O. Box 953745 St. Louis, Mo. 63195-3745

Identification 1933
Category Paten
Description Paten
Size 7"
Material Metal
Color Gold
Condition 8 *Lowest to Highest (1= poor, 10 = Excellent)*
Item Value \$100.00



Identification 1934
Category Paten
Description Paten
Size 7"
Material Metal
Color Gold
Condition 8 *Lowest to Highest (1= poor, 10 = Excellent)*
Item Value \$100.00



Identification 1936
Category Paten
Description Paten
Size 6"
Material Metal
Color Gold
Condition 9 *Lowest to Highest (1= poor, 10 = Excellent)*
Item Value \$112.50



Identification 1937
Category Paten
Description Paten
Size 6"
Material Metal
Color Gold
Condition 8 *Lowest to Highest (1= poor, 10 = Excellent)*
Item Value \$100.00



Identification 1939
Category Paten
Description Paten
Size 5"
Material Metal
Color Gold
Condition 8 *Lowest to Highest (1= poor, 10 = Excellent)*
Item Value \$100.00



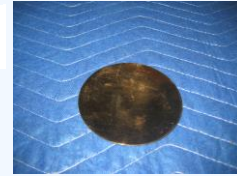
Identification 1940
Category Paten
Description Paten
Size 4 1/2"
Material Metal
Color Gold
Condition 6 *Lowest to Highest (1= poor, 10 = Excellent)*
Item Value \$75.00



WE THANK YOU FOR YOUR GENEROSITY

Donations can be made payable to: RECLAMATION CENTER Mail Stop 100700 P.O. Box 953745 St. Louis, Mo. 63195-3745

Identification 1942
Category Paten
Description Paten
Size 4"
Material Metal
Color Gold
Condition 9 *Lowest to Highest (1= poor, 10 = Excellent)*
Item Value \$112.50



Identification 1943
Category Paten
Description Paten
Size 4"
Material Metal
Color Gold
Condition 3 *Lowest to Highest (1= poor, 10 = Excellent)*
Item Value \$37.50



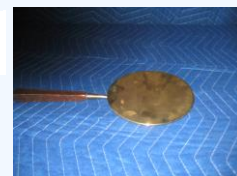
Identification 1944
Category Paten
Description Paten
Size 4 1/2"
Material Metal
Color Gold
Condition 5 *Lowest to Highest (1= poor, 10 = Excellent)*
Item Value \$62.50



Identification 1945
Category Paten
Description Paten
Size 5 1/2"
Material Metal
Color Gold
Condition 6 *Lowest to Highest (1= poor, 10 = Excellent)*
Item Value \$75.00



Identification 2011
Category Paten
Description Communion Pattern
Size 14 1/2" x 7"
Material Metal
Color Gold
Condition 8 *Lowest to Highest (1= poor, 10 = Excellent)*
Item Value \$100.00



Identification 2028
Category Paten
Description Paten
Size 7 1/2"
Material Metal
Color Gold
Condition 7 *Lowest to Highest (1= poor, 10 = Excellent)*
Item Value \$87.50



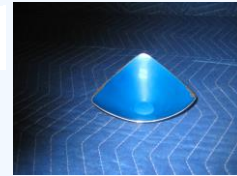
WE THANK YOU FOR YOUR GENEROSITY

Donations can be made payable to: RECLAMATION CENTER Mail Stop 100700 P.O. Box 953745 St. Louis, Mo. 63195-3745

Identification 2029
Category Paten
Description Paten
Size 6"
Material Metal
Color Gold
Condition 7 *Lowest to Highest (1= poor, 10 = Excellent)*
Item Value \$87.50



Identification 2031
Category Paten
Description Paten
Size 7"
Material Metal
Color Siver/Blue
Condition 7 *Lowest to Highest (1= poor, 10 = Excellent)*
Item Value \$87.50



Identification 2144
Category Paten
Description Paten
Size
Material Metal
Color Silver
Condition 9 *Lowest to Highest (1= poor, 10 = Excellent)*
Item Value \$112.50



Identification 2331
Category Paten
Description Paten
Size 8"
Material Metal
Color Gold
Condition 9 *Lowest to Highest (1= poor, 10 = Excellent)*
Item Value \$112.50



Identification 2393
Category Paten
Description Paten
Size 6"
Material Metal
Color Orange
Condition 10 *Lowest to Highest (1= poor, 10 = Excellent)*
Item Value \$125.00



Identification 2397
Category Paten
Description Paten
Size 8"
Material Metal
Color Gold/Silver
Condition 10 *Lowest to Highest (1= poor, 10 = Excellent)*
Item Value \$125.00



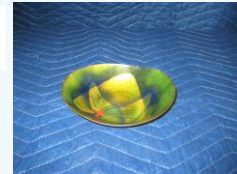
WE THANK YOU FOR YOUR GENEROSITY

Donations can be made payable to: RECLAMATION CENTER Mail Stop 100700 P.O. Box 953745 St. Louis, Mo. 63195-3745

Identification 2398
Category Paten
Description Paten
Size 6"
Material Ceramnic
Color Green
Condition 10 *Lowest to Highest (1= poor, 10 = Excellent)*
Item Value \$125.00



Identification 2399
Category Paten
Description Paten
Size 7"
Material Ceramnic
Color Green
Condition 10 *Lowest to Highest (1= poor, 10 = Excellent)*
Item Value \$125.00



Identification 2418
Category Paten
Description Paten
Size 8"
Material Ceramnic
Color Gold/Yellow
Condition 10 *Lowest to Highest (1= poor, 10 = Excellent)*
Item Value \$125.00



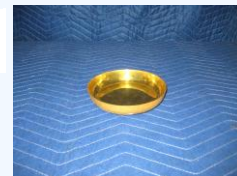
Identification 2631
Category Paten
Description Paten
Size
Material Metal
Color
Condition 10 *Lowest to Highest (1= poor, 10 = Excellent)*
Item Value \$125.00



Identification 2632
Category Paten
Description Paten
Size
Material Metal
Color Brass
Condition 8 *Lowest to Highest (1= poor, 10 = Excellent)*
Item Value \$100.00



Identification 2634
Category Paten
Description Paten
Size Small
Material Metal
Color Brass
Condition 9 *Lowest to Highest (1= poor, 10 = Excellent)*
Item Value \$112.50



WE THANK YOU FOR YOUR GENEROSITY

Donations can be made payable to: RECLAMATION CENTER Mail Stop 100700 P.O. Box 953745 St. Louis, Mo. 63195-3745

Identification 2635
Category Paten
Description Paten
Size
Material Metal
Color Silver
Condition 10 *Lowest to Highest (1= poor, 10 = Excellent)*
Item Value \$125.00



Identification 2638
Category Paten
Description Paten
Size Large
Material Metal
Color Silver
Condition 8 *Lowest to Highest (1= poor, 10 = Excellent)*
Item Value \$100.00



Identification 2640
Category Paten
Description Paten
Size Medium
Material Metal
Color Silver
Condition 6 *Lowest to Highest (1= poor, 10 = Excellent)*
Item Value \$75.00



Identification 2641
Category Paten
Description Paten
Size Small
Material Metal
Color Silver
Condition 7 *Lowest to Highest (1= poor, 10 = Excellent)*
Item Value \$87.50



Identification 2642
Category Paten
Description Paten
Size Medium
Material Metal
Color Silver
Condition 7 *Lowest to Highest (1= poor, 10 = Excellent)*
Item Value \$87.50



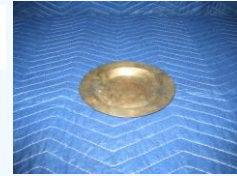
Identification 2644
Category Paten
Description Paten
Size Medium
Material Metal
Color Silver
Condition 8 *Lowest to Highest (1= poor, 10 = Excellent)*
Item Value \$100.00



WE THANK YOU FOR YOUR GENEROSITY

Donations can be made payable to: RECLAMATION CENTER Mail Stop 100700 P.O. Box 953745 St. Louis, Mo. 63195-3745

Identification 2645
Category Paten
Description Paten
Size Small
Material Metal
Color Brass/Silver
Condition 7 *Lowest to Highest (1= poor, 10 = Excellent)*
Item Value \$87.50



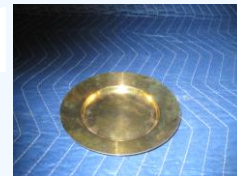
Identification 2646
Category Paten
Description Paten
Size
Material Metal
Color Silver
Condition 6 *Lowest to Highest (1= poor, 10 = Excellent)*
Item Value \$75.00



Identification 2651
Category Paten
Description Jesus Christ
Size 11 1/2" x 13 1/2"
Material
Color Mixed Color
Condition 10 *Lowest to Highest (1= poor, 10 = Excellent)*
Item Value \$125.00



Identification 2845
Category Paten
Description Paten
Size 6 1/2"
Material Metal
Color Gold
Condition 10 *Lowest to Highest (1= poor, 10 = Excellent)*
Item Value \$125.00



Identification 2846
Category Paten
Description Paten
Size 6 1/2"
Material Metal
Color Silver
Condition 10 *Lowest to Highest (1= poor, 10 = Excellent)*
Item Value \$125.00



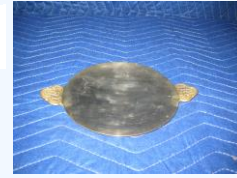
Identification 2847
Category Paten
Description Paten
Size 6 1/4"
Material Marble
Color Silver
Condition 9 *Lowest to Highest (1= poor, 10 = Excellent)*
Item Value \$112.50



WE THANK YOU FOR YOUR GENEROSITY

Donations can be made payable to: RECLAMATION CENTER Mail Stop 100700 P.O. Box 953745 St. Louis, Mo. 63195-3745

Identification 2856
Category Paten
Description Paten
Size 4 3/4"
Material Metal
Color Gold
Condition 8 *Lowest to Highest (1= poor, 10 = Excellent)*
Item Value \$100.00



Identification 2863
Category Paten
Description Paten
Size 8"
Material Ceramnic
Color Brown
Condition 10 *Lowest to Highest (1= poor, 10 = Excellent)*
Item Value \$125.00



Identification 2864
Category Paten
Description Paten
Size 7 1/2"
Material Metal
Color Gold
Condition 9 *Lowest to Highest (1= poor, 10 = Excellent)*
Item Value \$112.50



Identification 2899
Category Paten
Description Paten
Size
Material Metal
Color Gold
Condition 9 *Lowest to Highest (1= poor, 10 = Excellent)*
Item Value \$112.50



Identification 2901
Category Paten
Description Paten
Size
Material Metal
Color Gold
Condition 9 *Lowest to Highest (1= poor, 10 = Excellent)*
Item Value \$112.50



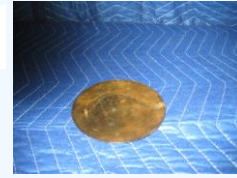
Identification 2989
Category Paten
Description Paten
Size 5"
Material Metal
Color Brass
Condition 9 *Lowest to Highest (1= poor, 10 = Excellent)*
Item Value \$112.50



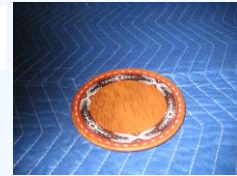
WE THANK YOU FOR YOUR GENEROSITY

Donations can be made payable to: RECLAMATION CENTER Mail Stop 100700 P.O. Box 953745 St. Louis, Mo. 63195-3745

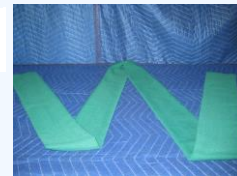
Identification 3047
Category Paten
Description Paten
Size 5 1/4"
Material Metal
Color Gold
Condition 7 *Lowest to Highest (1= poor, 10 = Excellent)*
Item Value \$87.50



Identification 3051
Category Paten
Description Paten
Size 6"
Material Wood
Color Brown
Condition 10 *Lowest to Highest (1= poor, 10 = Excellent)*
Item Value \$125.00



Identification 3056
Category Paten
Description Paten
Size 6"
Material Metal
Color Gold
Condition 8 *Lowest to Highest (1= poor, 10 = Excellent)*
Item Value \$100.00



Identification 3104
Category Paten
Description Paten
Size 7 1/2"
Material Metal
Color Silver
Condition 7 *Lowest to Highest (1= poor, 10 = Excellent)*
Item Value \$87.50



Identification 3150
Category Paten
Description Communion Paten
Size
Material Metal/Wood
Color Gold
Condition 9 *Lowest to Highest (1= poor, 10 = Excellent)*
Item Value \$112.50



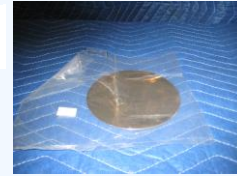
Identification 3152
Category Paten
Description Paten
Size
Material Metal
Color Gold
Condition 8 *Lowest to Highest (1= poor, 10 = Excellent)*
Item Value \$100.00



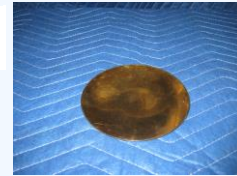
WE THANK YOU FOR YOUR GENEROSITY

Donations can be made payable to: RECLAMATION CENTER Mail Stop 100700 P.O. Box 953745 St. Louis, Mo. 63195-3745

Identification 3153
Category Paten
Description Paten
Size
Material Metal
Color Gold
Condition 9 *Lowest to Highest (1= poor, 10 = Excellent)*
Item Value \$112.50



Identification 3154
Category Paten
Description Paten
Size
Material Metal
Color Gold
Condition 8 *Lowest to Highest (1= poor, 10 = Excellent)*
Item Value \$100.00



Identification 3161
Category Paten
Description Paten
Size 7 1/2" x 1 1/2"
Material Metal
Color Gold
Condition 9 *Lowest to Highest (1= poor, 10 = Excellent)*
Item Value \$0.00

Identification 3169
Category Paten
Description Paten
Size 6"
Material Metal
Color Gold
Condition 8 *Lowest to Highest (1= poor, 10 = Excellent)*
Item Value \$0.00

Identification 3170
Category Paten
Description Paten
Size 7" x 20"
Material Metal
Color Gold
Condition 8 *Lowest to Highest (1= poor, 10 = Excellent)*
Item Value \$0.00

Identification 9992845
Category Paten
Description Paten
Size 6 1/2"
Material Metal
Color Gold
Condition 10 *Lowest to Highest (1= poor, 10 = Excellent)*
Item Value \$125.00

WE THANK YOU FOR YOUR GENEROSITY

Donations can be made payable to: RECLAMATION CENTER Mail Stop 100700 P.O. Box 953745 St. Louis, Mo. 63195-3745