



Archdiocese of St. Louis
Reclamation Center
Catalog Category

Office of Sacred Worship
 Reclamation Center
 reclamation@archstl.org
 314.792.6461

12/1/2021

Category Candle Holder

Identification 374
Category Candle Holder
Description Candle Holder
Size 2" x 3"
Material Brass
Color Brass
Condition 8 *Lowest to Highest (1= poor, 10 = Excellent)*
Item Value \$0.00

Identification 388
Category Candle Holder
Description Candle Holder
Size 1/2" x 6"
Material Metal
Color Brass
Condition 8 *Lowest to Highest (1= poor, 10 = Excellent)*
Item Value \$0.00

Identification 408
Category Candle Holder
Description Candle Holder
Size 1/2" x 6"
Material Metal
Color Silver
Condition 8 *Lowest to Highest (1= poor, 10 = Excellent)*
Item Value \$0.00



Identification 873
Category Candle Holder
Description Candle Holder
Size 56"x12"x12"
Material Brass
Color Mixed Color
Condition 9 *Lowest to Highest (1= poor, 10 = Excellent)*
Item Value \$0.00



Identification 874
Category Candle Holder
Description Candle Holder
Size 61"x18"x18"
Material Brass
Color Brass
Condition 7 *Lowest to Highest (1= poor, 10 = Excellent)*
Item Value \$0.00



WE THANK YOU FOR YOUR GENEROSITY

Donations can be made payable to: RECLAMATION CENTER Mail Stop 100700 P.O. Box 953745 St. Louis, Mo. 63195-3745

Identification 1190
Category Candle Holder
Description Candle Holder
Size 19" x 5"
Material Brass
Color Brass
Condition 9 *Lowest to Highest (1= poor, 10 = Excellent)*
Item Value \$0.00



Identification 1224
Category Candle Holder
Description Candle Holder
Size 60"x15"x15"
Material Brass
Color Brass
Condition 9 *Lowest to Highest (1= poor, 10 = Excellent)*
Item Value \$0.00



Identification 1285
Category Candle Holder
Description Candle Holder set
Size 13 1/2" x 9 1/2" x 5"
Material Metal
Color Brass
Condition 8 *Lowest to Highest (1= poor, 10 = Excellent)*
Item Value \$0.00



Identification 1286
Category Candle Holder
Description Candle Holder
Size 10 1/2" x 4"
Material Wood
Color Gold
Condition 7 *Lowest to Highest (1= poor, 10 = Excellent)*
Item Value \$0.00



Identification 1287
Category Candle Holder
Description Candle Holder set
Size 6" x 6 3/4" 7" x 8"
Material Metal
Color Brass
Condition 7 *Lowest to Highest (1= poor, 10 = Excellent)*
Item Value \$0.00



Identification 1288
Category Candle Holder
Description Candle Holder
Size 5" x 17"
Material Metal
Color Silver
Condition 9 *Lowest to Highest (1= poor, 10 = Excellent)*
Item Value \$0.00



WE THANK YOU FOR YOUR GENEROSITY

Donations can be made payable to: RECLAMATION CENTER Mail Stop 100700 P.O. Box 953745 St. Louis, Mo. 63195-3745

Identification 1294
Category Candle Holder
Description Candle Holder
Size 2 3/4" x 1/2"
Material Wood
Color Brown
Condition 10 *Lowest to Highest (1= poor, 10 = Excellent)*
Item Value \$0.00



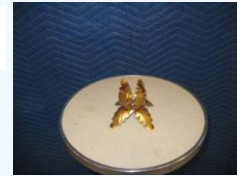
Identification 1295
Category Candle Holder
Description Candle Holder
Size 6" x 6"
Material Metal
Color Brown
Condition 8 *Lowest to Highest (1= poor, 10 = Excellent)*
Item Value \$0.00



Identification 1316
Category Candle Holder
Description Candle Holder
Size 3 1/2" x 2 1/2"
Material Metal
Color Gold
Condition 10 *Lowest to Highest (1= poor, 10 = Excellent)*
Item Value \$0.00



Identification 1317
Category Candle Holder
Description Candle Holder
Size 4 1/2" x 3"
Material Metal
Color Gold
Condition 10 *Lowest to Highest (1= poor, 10 = Excellent)*
Item Value \$0.00



Identification 1350
Category Candle Holder
Description Candle Holder
Size 17" x 3 1/2"
Material Metal
Color Gold
Condition 9 *Lowest to Highest (1= poor, 10 = Excellent)*
Item Value \$0.00



Identification 1365
Category Candle Holder
Description Candle Holder
Size 3 1/2"
Material Glass
Color Clear
Condition 10 *Lowest to Highest (1= poor, 10 = Excellent)*
Item Value \$0.00



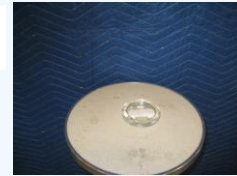
WE THANK YOU FOR YOUR GENEROSITY

Donations can be made payable to: RECLAMATION CENTER Mail Stop 100700 P.O. Box 953745 St. Louis, Mo. 63195-3745

Identification 1462
Category Candle Holder
Description Candle Holder
Size
Material Glass
Color Clear
Condition 8 *Lowest to Highest (1= poor, 10 = Excellent)*
Item Value \$0.00



Identification 1467
Category Candle Holder
Description Candle Holder
Size
Material Glass
Color Clear
Condition 10 *Lowest to Highest (1= poor, 10 = Excellent)*
Item Value \$0.00



Identification 1606
Category Candle Holder
Description Candle Holder
Size 6" x 5"
Material Metal
Color Brass
Condition 8 *Lowest to Highest (1= poor, 10 = Excellent)*
Item Value \$0.00

Identification 1607
Category Candle Holder
Description Candle Holder
Size 4" x 4 1/2"
Material Metal
Color Brass
Condition 10 *Lowest to Highest (1= poor, 10 = Excellent)*
Item Value \$0.00



Identification 1608
Category Candle Holder
Description Candle Holder
Size 6" x 3"
Material Metal
Color Brass
Condition 8 *Lowest to Highest (1= poor, 10 = Excellent)*
Item Value \$0.00



Identification 1609
Category Candle Holder
Description Candle Holder
Size 5" x 3"
Material Metal
Color Brass
Condition 8 *Lowest to Highest (1= poor, 10 = Excellent)*
Item Value \$0.00



WE THANK YOU FOR YOUR GENEROSITY

Donations can be made payable to: RECLAMATION CENTER Mail Stop 100700 P.O. Box 953745 St. Louis, Mo. 63195-3745

Identification 1615
Category Candle Holder
Description Candle Holder
Size 38" x 8"
Material Metal
Color Brass
Condition 5 *Lowest to Highest (1= poor, 10 = Excellent)*
Item Value \$0.00



Identification 1633
Category Candle Holder
Description Candle Holder
Size 11" x 4 1/2"
Material Metal
Color Gold
Condition 8 *Lowest to Highest (1= poor, 10 = Excellent)*
Item Value \$0.00



Identification 1638
Category Candle Holder
Description Candle Holder
Size 12" x 5"
Material Metal
Color Brass
Condition 9 *Lowest to Highest (1= poor, 10 = Excellent)*
Item Value \$0.00



Identification 1640
Category Candle Holder
Description Candle Holder
Size 4" x 4"
Material Glass
Color Clear
Condition 10 *Lowest to Highest (1= poor, 10 = Excellent)*
Item Value \$0.00



Identification 1780
Category Candle Holder
Description Candle Holder
Size 42: 8"
Material Metal
Color Silver
Condition 9 *Lowest to Highest (1= poor, 10 = Excellent)*
Item Value \$0.00



Identification 1783
Category Candle Holder
Description Candle Holder
Size 58" 12"
Material Metal
Color Gold
Condition 6 *Lowest to Highest (1= poor, 10 = Excellent)*
Item Value \$0.00



WE THANK YOU FOR YOUR GENEROSITY

Donations can be made payable to: RECLAMATION CENTER Mail Stop 100700 P.O. Box 953745 St. Louis, Mo. 63195-3745

Identification 1966
Category Candle Holder
Description Candle Holder Set
Size 6" x 3"
Material Metal
Color Gold
Condition 10 *Lowest to Highest (1= poor, 10 = Excellent)*
Item Value \$0.00



Identification 1967
Category Candle Holder
Description Candle Holder Set
Size 6" x 3"
Material Metal
Color Gold
Condition 8 *Lowest to Highest (1= poor, 10 = Excellent)*
Item Value \$0.00



Identification 1968
Category Candle Holder
Description Candle Holder Set
Size 4 1/2" x 3"
Material Metal
Color Gold
Condition 9 *Lowest to Highest (1= poor, 10 = Excellent)*
Item Value \$0.00



Identification 2078
Category Candle Holder
Description Candle Holder
Size 43" x 7 1/2"
Material Brass/Wood
Color Brass/Wood
Condition 9 *Lowest to Highest (1= poor, 10 = Excellent)*
Item Value \$0.00



Identification 2126
Category Candle Holder
Description Candle Holder
Size 8"
Material Glass
Color Clear
Condition 10 *Lowest to Highest (1= poor, 10 = Excellent)*
Item Value \$0.00



Identification 2128
Category Candle Holder
Description Candle Holder
Size 8"
Material Glass
Color White
Condition 10 *Lowest to Highest (1= poor, 10 = Excellent)*
Item Value \$0.00



WE THANK YOU FOR YOUR GENEROSITY

Donations can be made payable to: RECLAMATION CENTER Mail Stop 100700 P.O. Box 953745 St. Louis, Mo. 63195-3745

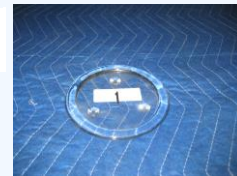
Identification 2313
Category Candle Holder
Description Candle Holder
Size 52"
Material Metal
Color Gold
Condition 8 *Lowest to Highest (1= poor, 10 = Excellent)*
Item Value \$0.00



Identification 2314
Category Candle Holder
Description Candle Holder
Size 43"
Material Metal
Color Gold
Condition 8 *Lowest to Highest (1= poor, 10 = Excellent)*
Item Value \$0.00



Identification 2334
Category Candle Holder
Description Candle Holder
Size 5 1/2"
Material Glass
Color Clear
Condition 10 *Lowest to Highest (1= poor, 10 = Excellent)*
Item Value \$0.00



Identification 2600
Category Candle Holder
Description Candle Holder
Size 4 3/4" x 1"
Material Metal
Color Gold
Condition 9 *Lowest to Highest (1= poor, 10 = Excellent)*
Item Value \$0.00



Identification 2871
Category Candle Holder
Description Candle Holder
Size 3 1/2" x 2 1/2"
Material Metal
Color Gold
Condition 9 *Lowest to Highest (1= poor, 10 = Excellent)*
Item Value \$0.00



Identification 2872
Category Candle Holder
Description Candle Holder
Size 14" x 2 1/2"
Material Metal
Color Gold
Condition 9 *Lowest to Highest (1= poor, 10 = Excellent)*
Item Value \$0.00



WE THANK YOU FOR YOUR GENEROSITY

Donations can be made payable to: RECLAMATION CENTER Mail Stop 100700 P.O. Box 953745 St. Louis, Mo. 63195-3745

Identification 2983
Category Candle Holder
Description Candle Holder
Size 44" x 10"
Material Wood
Color Brown
Condition 7 *Lowest to Highest (1= poor, 10 = Excellent)*
Item Value \$0.00



Identification 2984
Category Candle Holder
Description Candle Holder
Size 43" x 10"
Material Wood
Color Brown
Condition 7 *Lowest to Highest (1= poor, 10 = Excellent)*
Item Value \$0.00



Identification 2985
Category Candle Holder
Description Candle Holder
Size 34" x 10"
Material Wood
Color Brown
Condition 7 *Lowest to Highest (1= poor, 10 = Excellent)*
Item Value \$0.00



Identification 2986
Category Candle Holder
Description Candle Holder
Size 39" x 10"
Material Wood
Color Brown
Condition 7 *Lowest to Highest (1= poor, 10 = Excellent)*
Item Value \$0.00



Identification 2987
Category Candle Holder
Description Candle Holder
Size 36"
Material Wood
Color Brass
Condition 10 *Lowest to Highest (1= poor, 10 = Excellent)*
Item Value \$0.00



Identification 3008
Category Candle Holder
Description Candle Holder
Size 28"
Material Metal
Color Brass
Condition 9 *Lowest to Highest (1= poor, 10 = Excellent)*
Item Value \$0.00



WE THANK YOU FOR YOUR GENEROSITY

Donations can be made payable to: RECLAMATION CENTER Mail Stop 100700 P.O. Box 953745 St. Louis, Mo. 63195-3745

Identification 3155
Category Candle Holder
Description Candle Holder
Size 11" x 3 1/2"
Material Metal
Color Gold
Condition 9 *Lowest to Highest (1= poor, 10 = Excellent)*
Item Value \$0.00



Identification 3156
Category Candle Holder
Description Candle Holder
Size 18" x 6 1/2"
Material Metal
Color Gold
Condition 7 *Lowest to Highest (1= poor, 10 = Excellent)*
Item Value \$0.00



Identification 3157
Category Candle Holder
Description Candle Holder
Size 21" x 5 1/2"
Material Metal
Color Gold
Condition 4 *Lowest to Highest (1= poor, 10 = Excellent)*
Item Value \$0.00



Identification 3158
Category Candle Holder
Description Candle Holder
Size
Material Metal
Color Gold
Condition 9 *Lowest to Highest (1= poor, 10 = Excellent)*
Item Value \$0.00

Identification 3159
Category Candle Holder
Description Candle Holder
Size 23 1/2" x 6"
Material Metal
Color Gold
Condition 8 *Lowest to Highest (1= poor, 10 = Excellent)*
Item Value \$0.00



Identification 3207
Category Candle Holder
Description Candle Holder
Size 2" x 1"
Material Metal
Color Brass
Condition 7 *Lowest to Highest (1= poor, 10 = Excellent)*
Item Value \$0.00



WE THANK YOU FOR YOUR GENEROSITY

Donations can be made payable to: RECLAMATION CENTER Mail Stop 100700 P.O. Box 953745 St. Louis, Mo. 63195-3745

Identification 3210
Category Candle Holder
Description Candle Holder
Size 17" x 6"
Material Metal
Color Brass
Condition 8 *Lowest to Highest (1= poor, 10 = Excellent)*
Item Value \$0.00



Identification 3211
Category Candle Holder
Description Candle Holder
Size 11 1/2" x 6"
Material Metal
Color Brass
Condition 9 *Lowest to Highest (1= poor, 10 = Excellent)*
Item Value \$0.00



Identification 3212
Category Candle Holder
Description Candle Holder
Size 4" x 5"
Material Metal
Color Brass
Condition 9 *Lowest to Highest (1= poor, 10 = Excellent)*
Item Value \$0.00



Identification 3213
Category Candle Holder
Description Candle Holder
Size 4 1/2" x 4 1/2"
Material Metal
Color Brass
Condition 8 *Lowest to Highest (1= poor, 10 = Excellent)*
Item Value \$0.00



Identification 3218
Category Candle Holder
Description Candle Holder
Size 2 3/4" 2 1/4"
Material Plastic
Color White
Condition 10 *Lowest to Highest (1= poor, 10 = Excellent)*
Item Value \$0.00



Identification 3219
Category Candle Holder
Description Candle Holder
Size 2 3/4" 2 1/4"
Material Plastic
Color White
Condition 10 *Lowest to Highest (1= poor, 10 = Excellent)*
Item Value \$0.00



WE THANK YOU FOR YOUR GENEROSITY

Donations can be made payable to: RECLAMATION CENTER Mail Stop 100700 P.O. Box 953745 St. Louis, Mo. 63195-3745

Identification 3220
Category Candle Holder
Description Candle Holder
Size 2 3/4" 2 1/4"
Material Plastic
Color White
Condition 10 *Lowest to Highest (1= poor, 10 = Excellent)*
Item Value \$0.00



Identification 3221
Category Candle Holder
Description Candle Holder
Size 18" x 4"
Material Metal
Color Gold/Silver
Condition 10 *Lowest to Highest (1= poor, 10 = Excellent)*
Item Value \$0.00



Identification 5063
Category Candle Holder
Description Candle Holder w/candle
Size 29 1/2" x 6"
Material Metal
Color Brass
Condition 9 *Lowest to Highest (1= poor, 10 = Excellent)*
Item Value \$0.00



Identification 5064
Category Candle Holder
Description Candle Holder
Size 18 1/2" 6"
Material Metal
Color Brass
Condition 9 *Lowest to Highest (1= poor, 10 = Excellent)*
Item Value \$0.00



WE THANK YOU FOR YOUR GENEROSITY

Donations can be made payable to: RECLAMATION CENTER Mail Stop 100700 P.O. Box 953745 St. Louis, Mo. 63195-3745