





**Archdiocese of St. Louis
The Reclamation Center
Item Catalog**

Category Votive		
Identification	1332	
Category	Votive	
Description	Votive Candle Stand	
Size	50" x 15" x 20"	
Material	Wood	
Color	Brown	
Condition	8	<i>Lowest to Highest (1= poor, 10 = Excellent)</i>
<i>Free will donation, commensurate to fair market value</i>		
Identification	1334	
Category	Votive	
Description	Votive Candle Stand	
Size	42" x 20" x 33"	
Material	Metal	
Color	Black	
Condition	8	<i>Lowest to Highest (1= poor, 10 = Excellent)</i>
<i>Free will donation, commensurate to fair market value</i>		
Identification	1340	
Category	Votive	
Description	Votive Candle Stock	
Size	31" x 30 1/2" x 14"	
Material	Metal	
Color	Brass	
Condition	8	<i>Lowest to Highest (1= poor, 10 = Excellent)</i>
<i>Free will donation, commensurate to fair market value</i>		
Identification	2267	
Category	Votive	
Description	Votive Candle Stand	
Size	44" x 33" x 14"	
Material	Metal	
Color		
Condition	5	<i>Lowest to Highest (1= poor, 10 = Excellent)</i>
<i>Free will donation, commensurate to fair market value</i>		

WE THANK YOU FOR YOUR GENEROSITY

Donations can be made payable to: RECLAMATION CENTER Mail Stop 100700 P.O. Box 953745 St. Louis, Mo. 63195-3745
5/1/2024 Page 1 of 4

Identification 2302
Category Votive
Description Votive Candle Stand
Size 45" x 30 1/2"
Material Metal
Color Brass
Condition 5 *Lowest to Highest (1= poor, 10 = Excellent)*



Free will donation, commensurate to fair market value

Identification 2303
Category Votive
Description Votive Candle Stand
Size 45" x 30 1/2"
Material Metal
Color Brass
Condition 9 *Lowest to Highest (1= poor, 10 = Excellent)*



Free will donation, commensurate to fair market value

Identification 2304
Category Votive
Description Votive Candle Stand
Size 38" x 27"
Material Metal
Color Silver
Condition 8 *Lowest to Highest (1= poor, 10 = Excellent)*



Free will donation, commensurate to fair market value

Identification 2306
Category Votive
Description Votive Candle Stand
Size 44" x 35"
Material Metal
Color Black
Condition 8 *Lowest to Highest (1= poor, 10 = Excellent)*



Free will donation, commensurate to fair market value

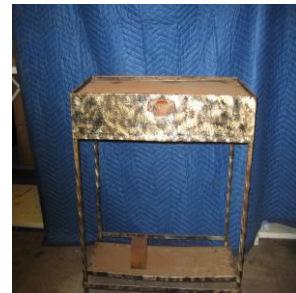
WE THANK YOU FOR YOUR GENEROSITY

Donations can be made payable to: RECLAMATION CENTER Mail Stop 100700 P.O. Box 953745 St. Louis, Mo. 63195-3745

5/1/2024

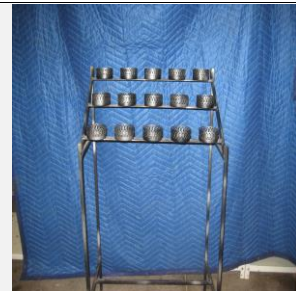
Page 2 of 4

Identification 2307
Category Votive
Description Votive Candle Stand
Size 33 1/4" x 13 1/4"
Material Metal
Color Brass
Condition 5 *Lowest to Highest (1= poor, 10 = Excellent)*



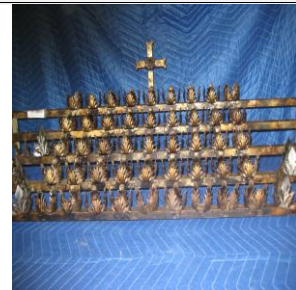
Free will donation, commensurate to fair market value

Identification 2308
Category Votive
Description Votive Candle Stand
Size 38" x 13" x 13"
Material Metal
Color Black
Condition 9 *Lowest to Highest (1= poor, 10 = Excellent)*



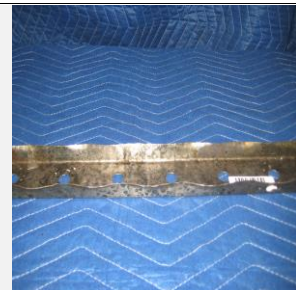
Free will donation, commensurate to fair market value

Identification 2322
Category Votive
Description Votive Candle Stand
Size 44" x 15 1/2"
Material Metal
Color
Condition 9 *Lowest to Highest (1= poor, 10 = Excellent)*



Free will donation, commensurate to fair market value

Identification 3164
Category Votive
Description Votive Candle Tray
Size 24" x 3"
Material Metal
Color Brass
Condition 8 *Lowest to Highest (1= poor, 10 = Excellent)*



Free will donation, commensurate to fair market value

WE THANK YOU FOR YOUR GENEROSITY

Donations can be made payable to: RECLAMATION CENTER Mail Stop 100700 P.O. Box 953745 St. Louis, Mo. 63195-3745

5/1/2024

Page 3 of 4

Identification 3202
Category Votive
Description Votive Candle Holder
Size 8 1/4"
Material Glass
Color Blue
Condition 10 *Lowest to Highest (1= poor, 10 = Excellent)*



Free will donation, commensurate to fair market value

Identification 3225
Category Votive
Description Votive Candle Holder
Size 8" x 3"
Material Glass
Color Red
Condition 8 *Lowest to Highest (1= poor, 10 = Excellent)*

Free will donation, commensurate to fair market value

WE THANK YOU FOR YOUR GENEROSITY

Donations can be made payable to: RECLAMATION CENTER Mail Stop 100700 P.O. Box 953745 St. Louis, Mo. 63195-3745

5/1/2024

Page 4 of 4