





**Archdiocese of St. Louis  
The Reclamation Center  
Item Catalog**

Category Vase		
<b>Identification</b>	419	
<b>Category</b>	Vase	
<b>Description</b>	Vase	
<b>Size</b>		
<b>Material</b>	Metal	
<b>Color</b>	Brass	
<b>Condition</b>	6	<i>Lowest to Highest (1= poor, 10 = Excellent)</i>
<i>Free will donation, commensurate to fair market value</i>		
<b>Identification</b>	1235	
<b>Category</b>	Vase	
<b>Description</b>	Vase	
<b>Size</b>	12" x 5"	
<b>Material</b>	Metal	
<b>Color</b>	Silver	
<b>Condition</b>	8	<i>Lowest to Highest (1= poor, 10 = Excellent)</i>
<i>Free will donation, commensurate to fair market value</i>		
<b>Identification</b>	1236	
<b>Category</b>	Vase	
<b>Description</b>	Vase	
<b>Size</b>	8" x 3 1/2"	
<b>Material</b>	Ceramic	
<b>Color</b>	White	
<b>Condition</b>	8	<i>Lowest to Highest (1= poor, 10 = Excellent)</i>
<i>Free will donation, commensurate to fair market value</i>		
<b>Identification</b>	1237	
<b>Category</b>	Vase	
<b>Description</b>	Vase	
<b>Size</b>	8" x 3 1/2"	
<b>Material</b>	Ceramic	
<b>Color</b>	White	
<b>Condition</b>	8	<i>Lowest to Highest (1= poor, 10 = Excellent)</i>
<i>Free will donation, commensurate to fair market value</i>		

WE THANK YOU FOR YOUR GENEROSITY

Donations can be made payable to: RECLAMATION CENTER Mail Stop 100700 P.O. Box 953745 St. Louis, Mo. 63195-3745

4/24/2024

Page 1 of 3

**Identification** 1239  
**Category** Vase  
**Description** Vase  
**Size** 8" x 4"  
**Material** Metal  
**Color** Silver  
**Condition** 8

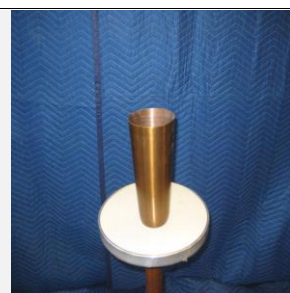
*Lowest to Highest (1= poor, 10 = Excellent)*



*Free will donation, commensurate to fair market value*

**Identification** 1241  
**Category** Vase  
**Description** Vase  
**Size** 8" 3/4"x5"  
**Material** Metal  
**Color** Brass  
**Condition** 8

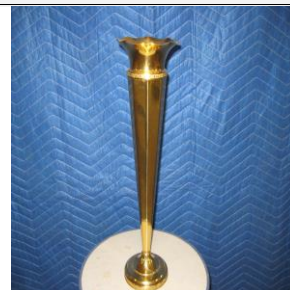
*Lowest to Highest (1= poor, 10 = Excellent)*



*Free will donation, commensurate to fair market value*

**Identification** 1309  
**Category** Vase  
**Description** Vase  
**Size** 4" x 16"  
**Material** Metal  
**Color** Gold  
**Condition** 10

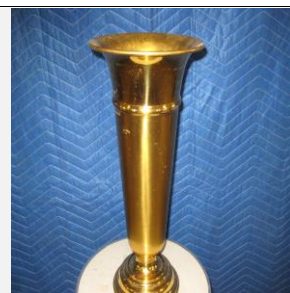
*Lowest to Highest (1= poor, 10 = Excellent)*



*Free will donation, commensurate to fair market value*

**Identification** 1310  
**Category** Vase  
**Description** Vase  
**Size** 6" x 16"  
**Material** Metal  
**Color** Gold  
**Condition** 10

*Lowest to Highest (1= poor, 10 = Excellent)*



*Free will donation, commensurate to fair market value*

WE THANK YOU FOR YOUR GENEROSITY

Donations can be made payable to: RECLAMATION CENTER Mail Stop 100700 P.O. Box 953745 St. Louis, Mo. 63195-3745

4/24/2024

Page 2 of 3

**Identification** 1319  
**Category** Vase  
**Description** Vase  
**Size** 2 3/4" x 10"  
**Material** Wood  
**Color** Brown  
**Condition** 10

*Lowest to Highest (1= poor, 10 = Excellent)*



*Free will donation, commensurate to fair market value*

**Identification** 4728  
**Category** Vase  
**Description** Plant Vase  
**Size** 10" x 12"  
**Material** Metal  
**Color** Gold  
**Condition** 9

*Lowest to Highest (1= poor, 10 = Excellent)*



*Free will donation, commensurate to fair market value*

WE THANK YOU FOR YOUR GENEROSITY

Donations can be made payable to: RECLAMATION CENTER Mail Stop 100700 P.O. Box 953745 St. Louis, Mo. 63195-3745

4/24/2024

Page 3 of 3