

**Archdiocese of St. Louis
The Reclamation Center
Item Catalog**

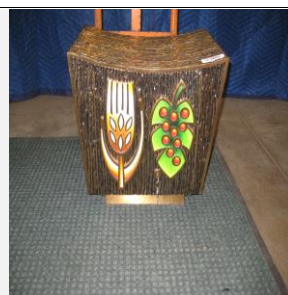
Category Tabernacle

Identification 366
Category Tabernacle
Description Tabernacle
Size 18 1/2" (H) x 16 1/2" (W) x 16 1/2" (D)
Material Metal
Color Brass
Condition 8 *Lowest to Highest (1= poor, 10 = Excellent)*



Free will donation, commensurate to fair market value

Identification 1454
Category Tabernacle
Description Tabernacle
Size 15" (H) x 18" (W) x 13" (D)
Material Metal
Color Gold
Condition 10 *Lowest to Highest (1= poor, 10 = Excellent)*



Free will donation, commensurate to fair market value

Identification 1762
Category Tabernacle
Description Tabernacle
Size 12" (H) x 15 1/2" (W) x 12" (D)
Material Metal
Color Gold
Condition 9 *Lowest to Highest (1= poor, 10 = Excellent)*

Free will donation, commensurate to fair market value

Identification 1763
Category Tabernacle
Description Tabernacle
Size 18" (H) x 28" (W) x 14 1/2" (D)
Material Metal
Color Gold
Condition 9 *Lowest to Highest (1= poor, 10 = Excellent)*

Free will donation, commensurate to fair market value

WE THANK YOU FOR YOUR GENEROSITY

Donations can be made payable to: RECLAMATION CENTER Mail Stop 100700 P.O. Box 953745 St. Louis, Mo. 63195-3745
5/1/2024 Page 1 of 4

Identification 1764
Category Tabernacle
Description Tabernacle - No Key
Size 20" (H) x 21" (W) x 17" (D)
Material Metal
Color Gold
Condition 9 *Lowest to Highest (1= poor, 10 = Excellent)*



Free will donation, commensurate to fair market value

Identification 1766
Category Tabernacle
Description Tabernacle - No Key
Size 18 3/4" (H) x 16" (W) x 19" (D)
Material Metal
Color Gold
Condition 9 *Lowest to Highest (1= poor, 10 = Excellent)*



Free will donation, commensurate to fair market value

Identification 4062
Category Tabernacle
Description Tabernacle Cover
Size 46" x 45"
Material Cloth
Color White
Condition 10 *Lowest to Highest (1= poor, 10 = Excellent)*



Free will donation, commensurate to fair market value

Identification 4063
Category Tabernacle
Description Tabernacle Cover
Size 41" x 14"
Material Cloth
Color White
Condition 10 *Lowest to Highest (1= poor, 10 = Excellent)*

Free will donation, commensurate to fair market value

WE THANK YOU FOR YOUR GENEROSITY

Donations can be made payable to: RECLAMATION CENTER Mail Stop 100700 P.O. Box 953745 St. Louis, Mo. 63195-3745

5/1/2024

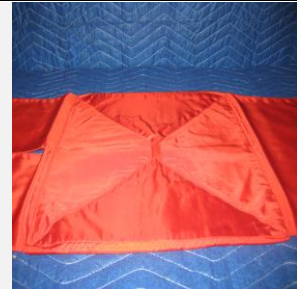
Page 2 of 4

Identification 4066
Category Tabernacle
Description Tabernacle Cover
Size 46" x 15"
Material Cloth
Color Red
Condition 10 *Lowest to Highest (1= poor, 10 = Excellent)*



Free will donation, commensurate to fair market value

Identification 4067
Category Tabernacle
Description Tabernacle Cover
Size 46" x 14"
Material Cloth
Color Red
Condition 10 *Lowest to Highest (1= poor, 10 = Excellent)*

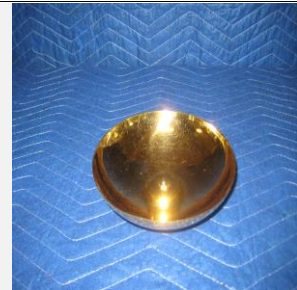


Free will donation, commensurate to fair market value

Identification 4075
Category Tabernacle
Description Tabernacle Cover
Size 46" x 15"
Material Cloth
Color Green
Condition 10 *Lowest to Highest (1= poor, 10 = Excellent)*

Free will donation, commensurate to fair market value

Identification 4076
Category Tabernacle
Description Tabernacle Cover
Size 46" x 15"
Material Cloth
Color Green
Condition 10 *Lowest to Highest (1= poor, 10 = Excellent)*



Free will donation, commensurate to fair market value

WE THANK YOU FOR YOUR GENEROSITY

Donations can be made payable to: RECLAMATION CENTER Mail Stop 100700 P.O. Box 953745 St. Louis, Mo. 63195-3745

5/1/2024

Page 3 of 4

Identification 5893
Category Tabernacle
Description Tabernacle
Size 9 1/2" x 15 1/2"
Material Wood
Color Brass
Condition 9 *Lowest to Highest (1= poor, 10 = Excellent)*

Free will donation, commensurate to fair market value

Identification 6443
Category Tabernacle
Description Tabernacle
Size 14 1/2" x 14"
Material Metal
Color Gold
Condition 9 *Lowest to Highest (1= poor, 10 = Excellent)*



Free will donation, commensurate to fair market value

WE THANK YOU FOR YOUR GENEROSITY

Donations can be made payable to: RECLAMATION CENTER Mail Stop 100700 P.O. Box 953745 St. Louis, Mo. 63195-3745

5/1/2024

Page 4 of 4