



Archdiocese of St. Louis
Reclamation Center
Catalog Category

Category Sconce

Identification 342

Category Sconce

Description Candle Sconce

Size 10 1/2" x 3"

Material Brass

Color Brass

Condition 7 *Lowest to Highest (1= poor, 10 = Excellent)*

Item Value *Free will donation, commensurate to fair market value*



Identification 1246

Category Sconce

Description Sconce w/cross

Size 10" x 5"

Material Metal

Color Brass

Condition 8 *Lowest to Highest (1= poor, 10 = Excellent)*

Item Value *Free will donation, commensurate to fair market value*



Identification 1247

Category Sconce

Description Sconce

Size 9" x 5"

Material Metal

Color Brass

Condition 8 *Lowest to Highest (1= poor, 10 = Excellent)*

Item Value *Free will donation, commensurate to fair market value*



Identification 1248

Category Sconce

Description Sconce

Size 7" x 3 1/2"

Material Metal

Color Black

Condition 8 *Lowest to Highest (1= poor, 10 = Excellent)*

Item Value *Free will donation, commensurate to fair market value*



Identification 1250

Category Sconce

Description Sconce

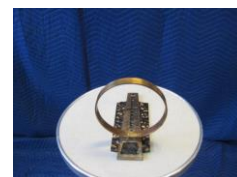
Size 8" x 5"

Material Metal

Color Brass

Condition 8 *Lowest to Highest (1= poor, 10 = Excellent)*

Item Value *Free will donation, commensurate to fair market value*



WE THANK YOU FOR YOUR GENEROSITY

Donations can be made payable to: RECLAMATION CENTER Mail Stop 100700 P.O. Box 953745 St. Louis, Mo. 63195-3745

Identification 1251
Category Sconce
Description Sconce
Size 10" x 5"
Material Metal
Color Brass
Condition 8 *Lowest to Highest (1= poor, 10 = Excellent)*
Item Value *Free will donation, commensurate to fair market value*



Identification 1253
Category Sconce
Description Sconce
Size 6" x 3 1/2"
Material Metal
Color Brass
Condition 8 *Lowest to Highest (1= poor, 10 = Excellent)*
Item Value *Free will donation, commensurate to fair market value*



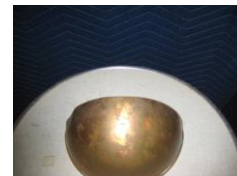
Identification 1255
Category Sconce
Description sconce
Size 8 1/2" x 5"
Material Metal
Color Brass
Condition 8 *Lowest to Highest (1= poor, 10 = Excellent)*
Item Value *Free will donation, commensurate to fair market value*



Identification 1297
Category Sconce
Description Wall Mount Shelf
Size 17" x 17 1/2"
Material Wood
Color Brown
Condition 10 *Lowest to Highest (1= poor, 10 = Excellent)*
Item Value *Free will donation, commensurate to fair market value*



Identification 1642
Category Sconce
Description Holy Water Font
Size 6" x 3"
Material Metal
Color Brass
Condition 5 *Lowest to Highest (1= poor, 10 = Excellent)*
Item Value *Free will donation, commensurate to fair market value*



Identification 2266
Category Sconce
Description Sconce
Size 22 1/2" x 14"
Material Marble
Color White
Condition 7 *Lowest to Highest (1= poor, 10 = Excellent)*
Item Value *Free will donation, commensurate to fair market value*



WE THANK YOU FOR YOUR GENEROSITY

Donations can be made payable to: RECLAMATION CENTER Mail Stop 100700 P.O. Box 953745 St. Louis, Mo. 63195-3745

Identification 3332
Category Sconce
Description Holy Water Font
Size 7" x 5 1/2"
Material Metal
Color Black
Condition 7 *Lowest to Highest (1= poor, 10 = Excellent)*
Item Value *Free will donation, commensurate to fair market value*

Identification 4044
Category Sconce
Description Candle Sconce
Size 5 1/2"
Material Metal
Color Gold
Condition 8 *Lowest to Highest (1= poor, 10 = Excellent)*
Item Value *Free will donation, commensurate to fair market value*

Identification 4087
Category Sconce
Description Sconce
Size 6 1/2" x 9"
Material Metal
Color Mixed Color
Condition 5 *Lowest to Highest (1= poor, 10 = Excellent)*
Item Value *Free will donation, commensurate to fair market value*

Identification 4511
Category Sconce
Description Holy Water Font
Size
Material Ceramnic
Color White
Condition 10 *Lowest to Highest (1= poor, 10 = Excellent)*
Item Value *Free will donation, commensurate to fair market value*

WE THANK YOU FOR YOUR GENEROSITY

Donations can be made payable to: RECLAMATION CENTER Mail Stop 100700 P.O. Box 953745 St. Louis, Mo. 63195-3745