

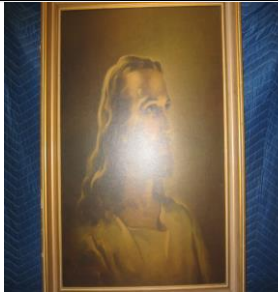



**Archdiocese of St. Louis
The Reclamation Center
Item Catalog**

Category	Picture	
Identification	1772	
Category	Picture	
Description	Cure of Ars	
Size	12 1/2" x 11 1/2"	
Material	Paper	
Color	Black/White	
Condition	9	<i>Lowest to Highest (1= poor, 10 = Excellent)</i>
<i>Free will donation, commensurate to fair market value</i>		
Identification	2196	
Category	Picture	
Description	Mother Theresa of Calcutta	
Size	17" x 14"	
Material	Paper	
Color	Mixed Color	
Condition	10	<i>Lowest to Highest (1= poor, 10 = Excellent)</i>
<i>Free will donation, commensurate to fair market value</i>		
Identification	2368	
Category	Picture	
Description	Portrait of Jesus	
Size	32 1/2" x 26 1/2"	
Material	Paper	
Color	Mixed Color	
Condition	9	<i>Lowest to Highest (1= poor, 10 = Excellent)</i>
<i>Free will donation, commensurate to fair market value</i>		
Identification	2728	
Category	Picture	
Description	Assi - Santa Marie deglie Angelic	
Size	18" x 7"	
Material	Paper	
Color	Mixed Color	
Condition	10	<i>Lowest to Highest (1= poor, 10 = Excellent)</i>
<i>Free will donation, commensurate to fair market value</i>		

WE THANK YOU FOR YOUR GENEROSITY

Donations can be made payable to: RECLAMATION CENTER Mail Stop 100700 P.O. Box 953745 St. Louis, Mo. 63195-3745
5/1/2024 Page 1 of 33

Identification 3012
Category Picture
Description St Francis of Assisi
Size 8" x 10"
Material
Color Mixed Color
Condition 10 *Lowest to Highest (1= poor, 10 = Excellent)*

Free will donation, commensurate to fair market value

Identification 3013
Category Picture
Description St John Neumann
Size 5" x 7"
Material
Color
Condition 9 *Lowest to Highest (1= poor, 10 = Excellent)*



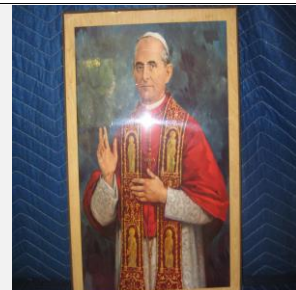
Free will donation, commensurate to fair market value

Identification 3019
Category Picture
Description Jesus Crucified
Size 7" x 9"
Material
Color
Condition 10 *Lowest to Highest (1= poor, 10 = Excellent)*



Free will donation, commensurate to fair market value

Identification 3058
Category Picture
Description Pope Pius VI
Size 14" x 18"
Material Paper
Color Mixed Color
Condition 10 *Lowest to Highest (1= poor, 10 = Excellent)*



Free will donation, commensurate to fair market value

WE THANK YOU FOR YOUR GENEROSITY

Donations can be made payable to: RECLAMATION CENTER Mail Stop 100700 P.O. Box 953745 St. Louis, Mo. 63195-3745

5/1/2024

Page 2 of 33

Identification 3059
Category Picture
Description Cardinal Rigali
Size 13 1/2" x 14 1/2"
Material Paper
Color Mixed Color
Condition 8 *Lowest to Highest (1= poor, 10 = Excellent)*



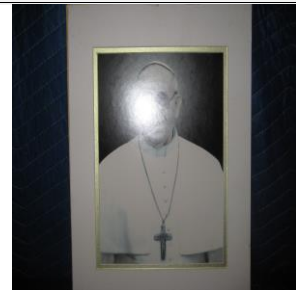
Free will donation, commensurate to fair market value

Identification 3060
Category Picture
Description Cardinal Rigali
Size 12 3/4" x 14 3/4"
Material Paper
Color Mixed Color
Condition 10 *Lowest to Highest (1= poor, 10 = Excellent)*



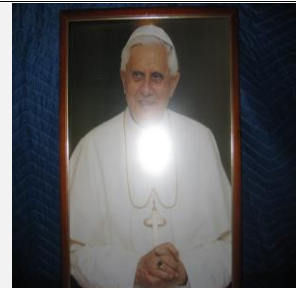
Free will donation, commensurate to fair market value

Identification 3063
Category Picture
Description Pope Francis photo
Size 11" x 14"
Material Paper
Color Mixed Color
Condition 8 *Lowest to Highest (1= poor, 10 = Excellent)*



Free will donation, commensurate to fair market value

Identification 3067
Category Picture
Description Pope Benedict
Size 18" x 22"
Material Paper
Color Mixed Color
Condition 8 *Lowest to Highest (1= poor, 10 = Excellent)*



Free will donation, commensurate to fair market value

WE THANK YOU FOR YOUR GENEROSITY

Donations can be made payable to: RECLAMATION CENTER Mail Stop 100700 P.O. Box 953745 St. Louis, Mo. 63195-3745

5/1/2024

Page 3 of 33

Identification 3068
Category Picture
Description Pope Benedict
Size 18 1/2" x 23"
Material Paper
Color Mixed Color
Condition 9 *Lowest to Highest (1= poor, 10 = Excellent)*



Free will donation, commensurate to fair market value

Identification 3072
Category Picture
Description One Body in Christ poster
Size 32" x 24"
Material Paper
Color Mixed Color
Condition 7 *Lowest to Highest (1= poor, 10 = Excellent)*



Free will donation, commensurate to fair market value

Identification 3073
Category Picture
Description Jean Eudes, Prophete Du Coeur
Size 25" x 14"
Material Paper
Color Mixed Color
Condition 9 *Lowest to Highest (1= poor, 10 = Excellent)*



Free will donation, commensurate to fair market value

Identification 3074
Category Picture
Description Jean Eudes, Les Pauvres
Size 25" x 14"
Material Paper
Color Mixed Color
Condition 10 *Lowest to Highest (1= poor, 10 = Excellent)*



Free will donation, commensurate to fair market value

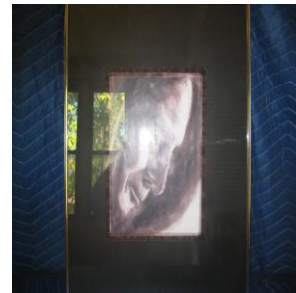
WE THANK YOU FOR YOUR GENEROSITY

Donations can be made payable to: RECLAMATION CENTER Mail Stop 100700 P.O. Box 953745 St. Louis, Mo. 63195-3745

5/1/2024

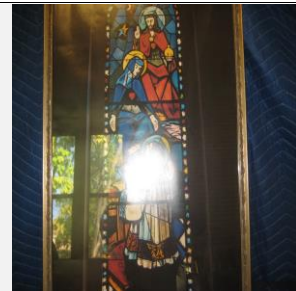
Page 4 of 33

Identification 3075
Category Picture
Description Risen Christ "Thy Kingdom Come"
Size 16 1/2" x 20 1/2"
Material Paper
Color Mixed Color
Condition 10 *Lowest to Highest (1= poor, 10 = Excellent)*



Free will donation, commensurate to fair market value

Identification 3076
Category Picture
Description Risen Christ "Thy Kingdom Come"
Size 24 1/2" x 18"
Material Paper
Color Mixed Color
Condition 7 *Lowest to Highest (1= poor, 10 = Excellent)*



Free will donation, commensurate to fair market value

Identification 3081
Category Picture
Description Pieta
Size 19 1/2" x 16 1/2"
Material Paper
Color Mixed Color
Condition 8 *Lowest to Highest (1= poor, 10 = Excellent)*



Free will donation, commensurate to fair market value

Identification 3084
Category Picture
Description Profile of Pope John Paul II
Size 16" x 20"
Material Paper
Color Mixed Color
Condition 10 *Lowest to Highest (1= poor, 10 = Excellent)*



Free will donation, commensurate to fair market value

WE THANK YOU FOR YOUR GENEROSITY

Donations can be made payable to: RECLAMATION CENTER Mail Stop 100700 P.O. Box 953745 St. Louis, Mo. 63195-3745

5/1/2024

Page 5 of 33

Identification 3275
Category Picture
Description Shroud Portrait
Size 13" x 16"
Material Paper
Color Mixed Color
Condition 10 *Lowest to Highest (1= poor, 10 = Excellent)*



Free will donation, commensurate to fair market value

Identification 3288
Category Picture
Description St. Clare Receiving Habit
Size 16" x 20"
Material Paper
Color
Condition 10 *Lowest to Highest (1= poor, 10 = Excellent)*



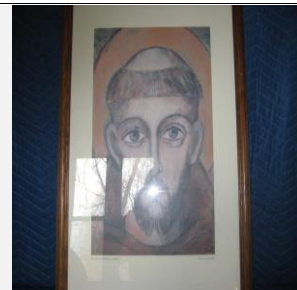
Free will donation, commensurate to fair market value

Identification 3347
Category Picture
Description Common Prayer of Preparation
Size 17" x 13"
Material Paper
Color Mixed Color
Condition 9 *Lowest to Highest (1= poor, 10 = Excellent)*



Free will donation, commensurate to fair market value

Identification 3419
Category Picture
Description St. Francis of Assisi
Size 21" x 30"
Material
Color
Condition 9 *Lowest to Highest (1= poor, 10 = Excellent)*



Free will donation, commensurate to fair market value

WE THANK YOU FOR YOUR GENEROSITY

Donations can be made payable to: RECLAMATION CENTER Mail Stop 100700 P.O. Box 953745 St. Louis, Mo. 63195-3745

5/1/2024

Page 6 of 33

Identification 3420
Category Picture
Description St. Claire of Assisi
Size 21" x 30"
Material
Color
Condition 9 *Lowest to Highest (1= poor, 10 = Excellent)*



Free will donation, commensurate to fair market value

Identification 3500
Category Picture
Description Jesus
Size 14" x 16"
Material Paper
Color
Condition 10 *Lowest to Highest (1= poor, 10 = Excellent)*



Free will donation, commensurate to fair market value

Identification 3647
Category Picture
Description Jesus
Size 15 1/2" x 15 1/2"
Material Paper
Color Mixed Color
Condition 10 *Lowest to Highest (1= poor, 10 = Excellent)*



Free will donation, commensurate to fair market value

Identification 3835
Category Picture
Description St. Jude
Size 12" x 16"
Material Paper
Color Mixed Color
Condition 9 *Lowest to Highest (1= poor, 10 = Excellent)*



Free will donation, commensurate to fair market value

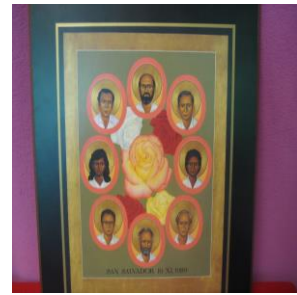
WE THANK YOU FOR YOUR GENEROSITY

Donations can be made payable to: RECLAMATION CENTER Mail Stop 100700 P.O. Box 953745 St. Louis, Mo. 63195-3745

5/1/2024

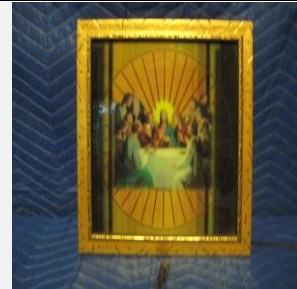
Page 7 of 33

Identification 3923
Category Picture
Description Martyrs of Jesuit University plaque
Size 10" x 13"
Material Wood
Color Mixed Color
Condition 10 *Lowest to Highest (1= poor, 10 = Excellent)*



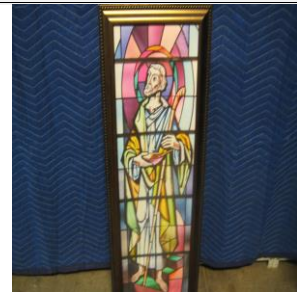
Free will donation, commensurate to fair market value

Identification 3946
Category Picture
Description Last Supper (Lighted)
Size 13" x 13"
Material Plastic
Color Mixed Color
Condition 8 *Lowest to Highest (1= poor, 10 = Excellent)*



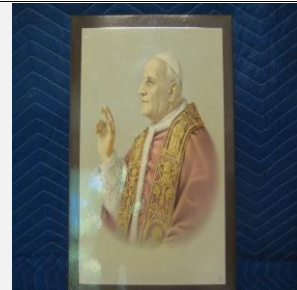
Free will donation, commensurate to fair market value

Identification 3966
Category Picture
Description Saint
Size 14 1/2" x 37"
Material Glass
Color Mixed Color
Condition 10 *Lowest to Highest (1= poor, 10 = Excellent)*



Free will donation, commensurate to fair market value

Identification 4157
Category Picture
Description Portrait of Pope John XXIII
Size 13 1/2" x 17"
Material Paper
Color Mixed Color
Condition 8 *Lowest to Highest (1= poor, 10 = Excellent)*



Free will donation, commensurate to fair market value

WE THANK YOU FOR YOUR GENEROSITY

Donations can be made payable to: RECLAMATION CENTER Mail Stop 100700 P.O. Box 953745 St. Louis, Mo. 63195-3745

5/1/2024

Page 8 of 33

Identification 4486
Category Picture
Description Last Supper picture
Size 20" x 14"
Material Paper
Color Mixed Color
Condition 8 *Lowest to Highest (1= poor, 10 = Excellent)*



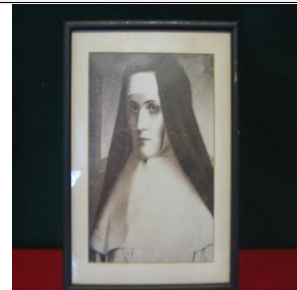
Free will donation, commensurate to fair market value

Identification 4487
Category Picture
Description Pope Pius XII picture
Size 11" x 13"
Material Paper
Color Mixed Color
Condition 7 *Lowest to Highest (1= poor, 10 = Excellent)*



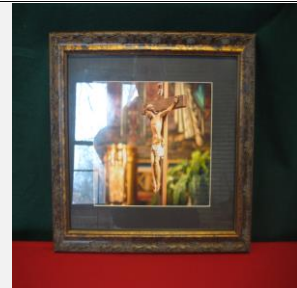
Free will donation, commensurate to fair market value

Identification 4568
Category Picture
Description Picture
Size 10" x 12"
Material Paper
Color
Condition 8 *Lowest to Highest (1= poor, 10 = Excellent)*



Free will donation, commensurate to fair market value

Identification 4645
Category Picture
Description Crucifix photo
Size 13" x 16"
Material
Color
Condition 10 *Lowest to Highest (1= poor, 10 = Excellent)*



Free will donation, commensurate to fair market value

WE THANK YOU FOR YOUR GENEROSITY

Donations can be made payable to: RECLAMATION CENTER Mail Stop 100700 P.O. Box 953745 St. Louis, Mo. 63195-3745

5/1/2024

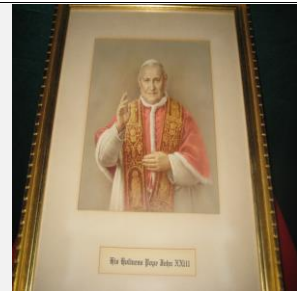
Page 9 of 33

Identification 4905
Category Picture
Description Shepherd Tending Sheep
Size 13" x 15"
Material Paper
Color Mixed Color
Condition 10 *Lowest to Highest (1= poor, 10 = Excellent)*



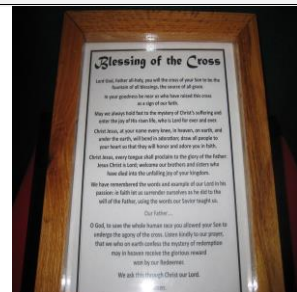
Free will donation, commensurate to fair market value

Identification 5081
Category Picture
Description Pope John XXIII Portrait
Size 18" x 14"
Material Paper
Color Mixed Color
Condition 10 *Lowest to Highest (1= poor, 10 = Excellent)*



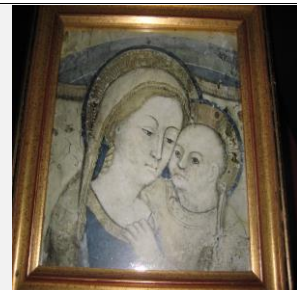
Free will donation, commensurate to fair market value

Identification 5088
Category Picture
Description Blessing of the Cross
Size 11" x 12"
Material Paper
Color
Condition 9 *Lowest to Highest (1= poor, 10 = Excellent)*



Free will donation, commensurate to fair market value

Identification 5089
Category Picture
Description Modonna and Child
Size 11" x 11"
Material Paper
Color
Condition 10 *Lowest to Highest (1= poor, 10 = Excellent)*



Free will donation, commensurate to fair market value

WE THANK YOU FOR YOUR GENEROSITY

Donations can be made payable to: RECLAMATION CENTER Mail Stop 100700 P.O. Box 953745 St. Louis, Mo. 63195-37.

5/1/2024

Page 10 of 33

Identification 5093
Category Picture
Description St. Michael the Archangel
Size 6" x 6"
Material Paper
Color
Condition 10 *Lowest to Highest (1= poor, 10 = Excellent)*



Free will donation, commensurate to fair market value

Identification 5102
Category Picture
Description Pope John Paul II print
Size 10" x 12"
Material Paper
Color
Condition 10 *Lowest to Highest (1= poor, 10 = Excellent)*



Free will donation, commensurate to fair market value

Identification 5103
Category Picture
Description Pope Benedict & Archbishop Burke
Size 12" x 15"
Material Paper
Color
Condition 10 *Lowest to Highest (1= poor, 10 = Excellent)*



Free will donation, commensurate to fair market value

Identification 5115
Category Picture
Description Pope John Paul II and Cardinal Rigali
Size 9" x 12"
Material Paper
Color
Condition 10 *Lowest to Highest (1= poor, 10 = Excellent)*



Free will donation, commensurate to fair market value

WE THANK YOU FOR YOUR GENEROSITY

Donations can be made payable to: RECLAMATION CENTER Mail Stop 100700 P.O. Box 953745 St. Louis, Mo. 63195-3745

5/1/2024

Page 11 of 33

Identification 5128
Category Picture
Description Christ print
Size 9 1/4" x 11"
Material Paper
Color
Condition 10 *Lowest to Highest (1= poor, 10 = Excellent)*



Free will donation, commensurate to fair market value

Identification 5130
Category Picture
Description Christ Knocking at the Door
Size 16" x 22 1/2"
Material Paper
Color
Condition 10 *Lowest to Highest (1= poor, 10 = Excellent)*



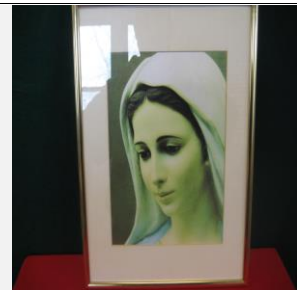
Free will donation, commensurate to fair market value

Identification 5137
Category Picture
Description Notre Dame Cathedral print
Size 16" x 20"
Material Paper
Color
Condition 10 *Lowest to Highest (1= poor, 10 = Excellent)*



Free will donation, commensurate to fair market value

Identification 5139
Category Picture
Description Blessed Mother print
Size 11 1/4" x 14 1/2"
Material Paper
Color
Condition 10 *Lowest to Highest (1= poor, 10 = Excellent)*



Free will donation, commensurate to fair market value

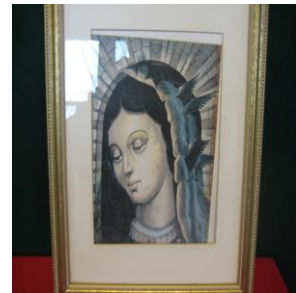
WE THANK YOU FOR YOUR GENEROSITY

Donations can be made payable to: RECLAMATION CENTER Mail Stop 100700 P.O. Box 953745 St. Louis, Mo. 63195-3745

5/1/2024

Page 12 of 33

Identification 5140
Category Picture
Description Blessed Mother print
Size 13" x 16"
Material Paper
Color
Condition 10 *Lowest to Highest (1= poor, 10 = Excellent)*



Free will donation, commensurate to fair market value

Identification 5315
Category Picture
Description St. Francis of Assisi
Size 12" x 10"
Material
Color
Condition 10 *Lowest to Highest (1= poor, 10 = Excellent)*



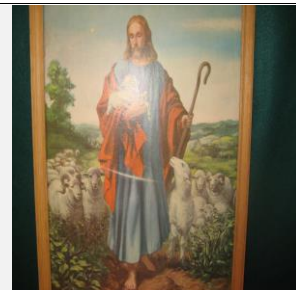
Free will donation, commensurate to fair market value

Identification 5352
Category Picture
Description Good Shepherd Convent
Size 11 1/2" x 14 1/2"
Material Paper
Color
Condition 10 *Lowest to Highest (1= poor, 10 = Excellent)*



Free will donation, commensurate to fair market value

Identification 5423
Category Picture
Description Good Shepherd Print
Size 17" x 21 1/2"
Material Paper
Color Mixed Color
Condition 8 *Lowest to Highest (1= poor, 10 = Excellent)*



Free will donation, commensurate to fair market value

WE THANK YOU FOR YOUR GENEROSITY

Donations can be made payable to: RECLAMATION CENTER Mail Stop 100700 P.O. Box 953745 St. Louis, Mo. 63195-3745

5/1/2024

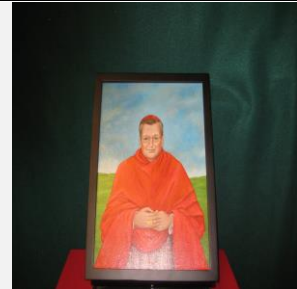
Page 13 of 33

Identification 5430
Category Picture
Description Holy Trinity
Size 11" x 14 1/2"
Material Paper
Color
Condition 9 *Lowest to Highest (1= poor, 10 = Excellent)*



Free will donation, commensurate to fair market value

Identification 5510
Category Picture
Description Portrait of Archbishop Burke
Size 13 1/4" X 17"
Material Paper
Color Mixed Color
Condition 10 *Lowest to Highest (1= poor, 10 = Excellent)*



Free will donation, commensurate to fair market value

Identification 5695
Category Picture
Description St. Anthony and Jesus
Size 7" x 9"
Material Paper
Color
Condition 7 *Lowest to Highest (1= poor, 10 = Excellent)*



Free will donation, commensurate to fair market value

Identification 5696
Category Picture
Description Pope John Paul II
Size 12" x 16"
Material Paper
Color
Condition 8 *Lowest to Highest (1= poor, 10 = Excellent)*



Free will donation, commensurate to fair market value

WE THANK YOU FOR YOUR GENEROSITY

Donations can be made payable to: RECLAMATION CENTER Mail Stop 100700 P.O. Box 953745 St. Louis, Mo. 63195-3745

5/1/2024

Page 14 of 33

Identification 5701
Category Picture
Description Mary and Jesus
Size 28" x 33"
Material Paper
Color
Condition 8 *Lowest to Highest (1= poor, 10 = Excellent)*



Free will donation, commensurate to fair market value

Identification 5748
Category Picture
Description Pope John Paul II
Size 16" x 20"
Material Paper
Color Mixed Color
Condition 10 *Lowest to Highest (1= poor, 10 = Excellent)*



Free will donation, commensurate to fair market value

Identification 5753
Category Picture
Description Do This in Remembrance of Me
Size 16" x 20"
Material Paper
Color
Condition 10 *Lowest to Highest (1= poor, 10 = Excellent)*



Free will donation, commensurate to fair market value

Identification 5763
Category Picture
Description Cardinal Rigali
Size 8" x 10"
Material Paper
Color
Condition 10 *Lowest to Highest (1= poor, 10 = Excellent)*



Free will donation, commensurate to fair market value

WE THANK YOU FOR YOUR GENEROSITY

Donations can be made payable to: RECLAMATION CENTER Mail Stop 100700 P.O. Box 953745 St. Louis, Mo. 63195-3745

5/1/2024

Page 15 of 33

Identification 5764
Category Picture
Description Jesus Christ
Size 11" x 15"
Material Paper
Color
Condition 10 *Lowest to Highest (1= poor, 10 = Excellent)*



Free will donation, commensurate to fair market value

Identification 5766
Category Picture
Description Inspirational Art Work
Size 15 1/2" x 20"
Material Paper
Color Mixed Color
Condition 10 *Lowest to Highest (1= poor, 10 = Excellent)*



Free will donation, commensurate to fair market value

Identification 5771
Category Picture
Description Church
Size 14" x 17"
Material Paper
Color
Condition 10 *Lowest to Highest (1= poor, 10 = Excellent)*

Free will donation, commensurate to fair market value

Identification 5852
Category Picture
Description Picture-Holding Newborn
Size
Material Paper
Color White
Condition 5 *Lowest to Highest (1= poor, 10 = Excellent)*



Free will donation, commensurate to fair market value

WE THANK YOU FOR YOUR GENEROSITY

Donations can be made payable to: RECLAMATION CENTER Mail Stop 100700 P.O. Box 953745 St. Louis, Mo. 63195-3745

5/1/2024

Page 16 of 33

Identification 5853
Category Picture
Description Picture-Cardinal Unknown
Size
Material Paper
Color White
Condition 5 *Lowest to Highest (1= poor, 10 = Excellent)*



Free will donation, commensurate to fair market value

Identification 5854
Category Picture
Description Picture-Unknown
Size
Material Paper
Color White
Condition 5 *Lowest to Highest (1= poor, 10 = Excellent)*



Free will donation, commensurate to fair market value

Identification 5877
Category Picture
Description Jesus Christ
Size 12"
Material Paper
Color
Condition 9 *Lowest to Highest (1= poor, 10 = Excellent)*



Free will donation, commensurate to fair market value

Identification 5928
Category Picture
Description Sacred Heart
Size 7" x 9 "
Material Paper
Color
Condition 10 *Lowest to Highest (1= poor, 10 = Excellent)*



Free will donation, commensurate to fair market value

WE THANK YOU FOR YOUR GENEROSITY

Donations can be made payable to: RECLAMATION CENTER Mail Stop 100700 P.O. Box 953745 St. Louis, Mo. 63195-3745

5/1/2024

Page 17 of 33

Identification 6020
Category Picture
Description Jesus
Size 10" x 12"
Material Paper
Color Mixed Color
Condition 8 *Lowest to Highest (1= poor, 10 = Excellent)*



Free will donation, commensurate to fair market value

Identification 6069
Category Picture
Description Mary Portrait
Size 13 1/2" x 17 1/4"
Material Paper
Color
Condition 10 *Lowest to Highest (1= poor, 10 = Excellent)*



Free will donation, commensurate to fair market value

Identification 6070
Category Picture
Description Pope John Paul II
Size 12" x 16"
Material Paper
Color
Condition 10 *Lowest to Highest (1= poor, 10 = Excellent)*



Free will donation, commensurate to fair market value

Identification 6167
Category Picture
Description "Creativity" Frame Picture
Size 32" x 39"
Material Paper
Color Mixed Color
Condition 10 *Lowest to Highest (1= poor, 10 = Excellent)*



Free will donation, commensurate to fair market value

WE THANK YOU FOR YOUR GENEROSITY

Donations can be made payable to: RECLAMATION CENTER Mail Stop 100700 P.O. Box 953745 St. Louis, Mo. 63195-3745

5/1/2024

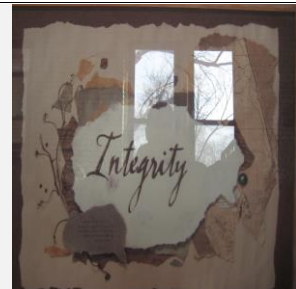
Page 18 of 33

Identification 6168
Category Picture
Description "Service" Frame Picture
Size 32" x 39"
Material Paper
Color Mixed Color
Condition 10 *Lowest to Highest (1= poor, 10 = Excellent)*



Free will donation, commensurate to fair market value

Identification 6169
Category Picture
Description "Integrity" Frame Picture
Size 32" x 39"
Material Paper
Color Mixed Color
Condition 10 *Lowest to Highest (1= poor, 10 = Excellent)*



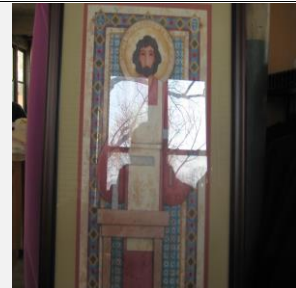
Free will donation, commensurate to fair market value

Identification 6170
Category Picture
Description "Dedication" Frame Picture
Size 32" x 39"
Material Paper
Color Mixed Color
Condition 10 *Lowest to Highest (1= poor, 10 = Excellent)*



Free will donation, commensurate to fair market value

Identification 6171
Category Picture
Description "St. Joseph the Worker" Picture
Size 18" x 31"
Material Paper
Color Mixed Color
Condition 10 *Lowest to Highest (1= poor, 10 = Excellent)*



Free will donation, commensurate to fair market value

WE THANK YOU FOR YOUR GENEROSITY

Donations can be made payable to: RECLAMATION CENTER Mail Stop 100700 P.O. Box 953745 St. Louis, Mo. 63195-3745

5/1/2024

Page 19 of 33

Identification 6172
Category Picture
Description "Nun" Frame Picture
Size 26" x 34"
Material Paper
Color Mixed Color
Condition 10 *Lowest to Highest (1= poor, 10 = Excellent)*



Free will donation, commensurate to fair market value

Identification 6173
Category Picture
Description "The Golden Rule" Frame Picture
Size 31" x 39"
Material Paper
Color Mixed Color
Condition 10 *Lowest to Highest (1= poor, 10 = Excellent)*



Free will donation, commensurate to fair market value

Identification 6174
Category Picture
Description "Christ the Healer" Frame Picture
Size
Material Paper
Color Mixed Color
Condition 9 *Lowest to Highest (1= poor, 10 = Excellent)*



Free will donation, commensurate to fair market value

Identification 6175
Category Picture
Description "Basilica di St. Sebastiano" Frame Picture
Size 17" x 22"
Material Paper
Color Mixed Color
Condition 8 *Lowest to Highest (1= poor, 10 = Excellent)*



Free will donation, commensurate to fair market value

WE THANK YOU FOR YOUR GENEROSITY

Donations can be made payable to: RECLAMATION CENTER Mail Stop 100700 P.O. Box 953745 St. Louis, Mo. 63195-3745

5/1/2024

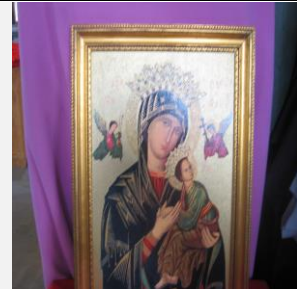
Page 20 of 33

Identification 6176
Category Picture
Description "Chisea di St. Maria della Vittoria" Frame Picture
Size 17" x 22"
Material Paper
Color Mixed Color
Condition 10 *Lowest to Highest (1= poor, 10 = Excellent)*



Free will donation, commensurate to fair market value

Identification 6195
Category Picture
Description Our Lady of Perpetual Help Picture
Size 13 1/2" x 17 1/2"
Material Wood
Color Mixed Color
Condition 10 *Lowest to Highest (1= poor, 10 = Excellent)*



Free will donation, commensurate to fair market value

Identification 6196
Category Picture
Description Divine Mercy Picture
Size 10" x 18"
Material Paper
Color Mixed Color
Condition 10 *Lowest to Highest (1= poor, 10 = Excellent)*



Free will donation, commensurate to fair market value

Identification 6198
Category Picture
Description Divine Mercy Print
Size 8" x 10"
Material Paper
Color Mixed Color
Condition 10 *Lowest to Highest (1= poor, 10 = Excellent)*



Free will donation, commensurate to fair market value

WE THANK YOU FOR YOUR GENEROSITY

Donations can be made payable to: RECLAMATION CENTER Mail Stop 100700 P.O. Box 953745 St. Louis, Mo. 63195-3745

5/1/2024

Page 21 of 33

Identification 6248
Category Picture
Description Portrait of Christ
Size 5" x 6"
Material Paper
Color Mixed Color
Condition 8 *Lowest to Highest (1= poor, 10 = Excellent)*

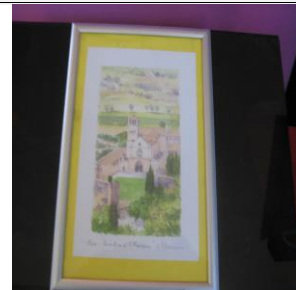
Free will donation, commensurate to fair market value

Identification 6251
Category Picture
Description Portrait of St. Francis Assisi
Size 9 1/2" x 16"
Material Paper
Color Mixed Color
Condition 8 *Lowest to Highest (1= poor, 10 = Excellent)*



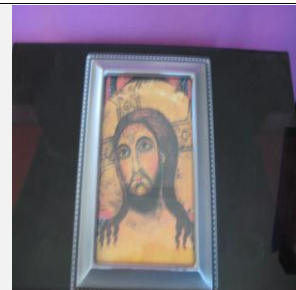
Free will donation, commensurate to fair market value

Identification 6255
Category Picture
Description Basilica of St. Francis of Assisi
Size 5 1/2" x 7 1/2"
Material Paper
Color Mixed Color
Condition 10 *Lowest to Highest (1= poor, 10 = Excellent)*



Free will donation, commensurate to fair market value

Identification 6256
Category Picture
Description Portrait of Jesus
Size 5" x 7"
Material Paper
Color Mixed Color
Condition 10 *Lowest to Highest (1= poor, 10 = Excellent)*



Free will donation, commensurate to fair market value

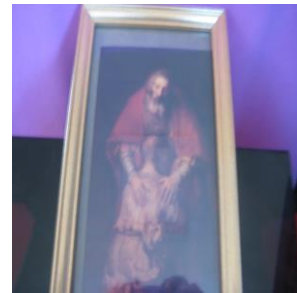
WE THANK YOU FOR YOUR GENEROSITY

Donations can be made payable to: RECLAMATION CENTER Mail Stop 100700 P.O. Box 953745 St. Louis, Mo. 63195-3745

5/1/2024

Page 22 of 33

Identification 6257
Category Picture
Description Portrait of Jesus
Size 7: x 13"
Material Paper
Color Mixed Color
Condition 10 *Lowest to Highest (1= poor, 10 = Excellent)*



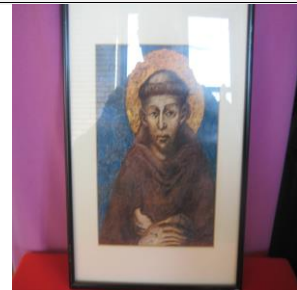
Free will donation, commensurate to fair market value

Identification 6258
Category Picture
Description Pope Francis
Size 10" x 12"
Material Paper
Color Mixed Color
Condition 10 *Lowest to Highest (1= poor, 10 = Excellent)*



Free will donation, commensurate to fair market value

Identification 6259
Category Picture
Description Portrait of St. Francis Assisi
Size 11" x 14"
Material Paper
Color Mixed Color
Condition 10 *Lowest to Highest (1= poor, 10 = Excellent)*



Free will donation, commensurate to fair market value

Identification 6260
Category Picture
Description Portrait of St. Clair
Size 11"x 14"
Material Paper
Color Mixed Color
Condition 10 *Lowest to Highest (1= poor, 10 = Excellent)*



Free will donation, commensurate to fair market value

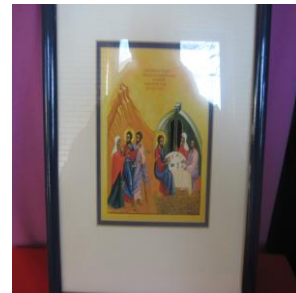
WE THANK YOU FOR YOUR GENEROSITY

Donations can be made payable to: RECLAMATION CENTER Mail Stop 100700 P.O. Box 953745 St. Louis, Mo. 63195-3745

5/1/2024

Page 23 of 33

Identification 6261
Category Picture
Description Scene of Christ and Disciples
Size 12" x 15"
Material Paper
Color Mixed Color
Condition 10 *Lowest to Highest (1= poor, 10 = Excellent)*



Free will donation, commensurate to fair market value

Identification 6262
Category Picture
Description Christ with Apostles
Size 12" x 15"
Material Paper
Color Mixed Color
Condition 10 *Lowest to Highest (1= poor, 10 = Excellent)*



Free will donation, commensurate to fair market value

Identification 6266
Category Picture
Description Portrait of Mary Ascending into Heaven
Size 16" x 21"
Material Paper
Color Mixed Color
Condition 9 *Lowest to Highest (1= poor, 10 = Excellent)*



Free will donation, commensurate to fair market value

Identification 6267
Category Picture
Description Portrait of Paul VI
Size 20" x 24"
Material Paper
Color Mixed Color
Condition 10 *Lowest to Highest (1= poor, 10 = Excellent)*



Free will donation, commensurate to fair market value

WE THANK YOU FOR YOUR GENEROSITY

Donations can be made payable to: RECLAMATION CENTER Mail Stop 100700 P.O. Box 953745 St. Louis, Mo. 63195-3745

5/1/2024

Page 24 of 33

Identification 6268
Category Picture
Description Portrait of Archbishop Burke
Size 17" x 21"
Material Paper
Color Mixed Color
Condition 10 *Lowest to Highest (1= poor, 10 = Excellent)*



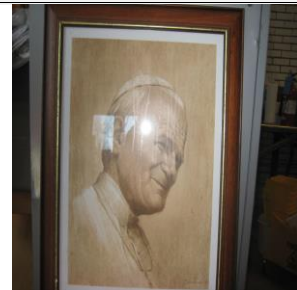
Free will donation, commensurate to fair market value

Identification 6269
Category Picture
Description Picture of Pope Benedict
Size 19" x 23"
Material Paper
Color Mixed Color
Condition 10 *Lowest to Highest (1= poor, 10 = Excellent)*



Free will donation, commensurate to fair market value

Identification 6270
Category Picture
Description Picture of Pope John Paul II
Size 19" x 23"
Material Paper
Color Mixed Color
Condition 10 *Lowest to Highest (1= poor, 10 = Excellent)*



Free will donation, commensurate to fair market value

Identification 6271
Category Picture
Description 1999 Papal Visit Commorative Poster
Size 19 1/2" x 23"
Material Paper
Color Mixed Color
Condition 10 *Lowest to Highest (1= poor, 10 = Excellent)*



Free will donation, commensurate to fair market value

WE THANK YOU FOR YOUR GENEROSITY

Donations can be made payable to: RECLAMATION CENTER Mail Stop 100700 P.O. Box 953745 St. Louis, Mo. 63195-3745

5/1/2024

Page 25 of 33

Identification 6272
Category Picture
Description Maria Santissima Del Miracili
Size 20" x 28"
Material Paper
Color Mixed Color
Condition 8 *Lowest to Highest (1= poor, 10 = Excellent)*



Free will donation, commensurate to fair market value

Identification 6273
Category Picture
Description St. Louis Post Dispatch Front Page of Pope John Paul visit
Size 21" x 27"
Material Paper
Color Mixed Color
Condition 10 *Lowest to Highest (1= poor, 10 = Excellent)*



Free will donation, commensurate to fair market value

Identification 6274
Category Picture
Description Painting of Jesus Christ
Size 23" x 26"
Material Paper
Color Mixed Color
Condition 10 *Lowest to Highest (1= poor, 10 = Excellent)*



Free will donation, commensurate to fair market value

Identification 6275
Category Picture
Description St. Francis Xavier College Church
Size 11" x 14"
Material Paper
Color Black/White
Condition 10 *Lowest to Highest (1= poor, 10 = Excellent)*



Free will donation, commensurate to fair market value

WE THANK YOU FOR YOUR GENEROSITY

Donations can be made payable to: RECLAMATION CENTER Mail Stop 100700 P.O. Box 953745 St. Louis, Mo. 63195-3745

5/1/2024

Page 26 of 33

Identification 6276
Category Picture
Description Mount Carmel Church
Size 11" x 14"
Material Organization Contact
Color Black/White
Condition 10 *Lowest to Highest (1= poor, 10 = Excellent)*



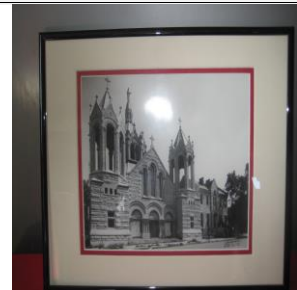
Free will donation, commensurate to fair market value

Identification 6277
Category Picture
Description St. Aloysius Gonzaga Church
Size 11" x 14"
Material Paper
Color Black/White
Condition 10 *Lowest to Highest (1= poor, 10 = Excellent)*



Free will donation, commensurate to fair market value

Identification 6278
Category Picture
Description Church
Size 11" x 14"
Material Paper
Color Black/White
Condition 10 *Lowest to Highest (1= poor, 10 = Excellent)*



Free will donation, commensurate to fair market value

Identification 6279
Category Picture
Description 33Basilica of St. Louis, King of France
Size 11" x 14"
Material Paper
Color Black/White
Condition 10 *Lowest to Highest (1= poor, 10 = Excellent)*



Free will donation, commensurate to fair market value

WE THANK YOU FOR YOUR GENEROSITY

Donations can be made payable to: RECLAMATION CENTER Mail Stop 100700 P.O. Box 953745 St. Louis, Mo. 63195-3745

5/1/2024

Page 27 of 33

Identification 6280
Category Picture
Description Church
Size 11" x 14"
Material Paper
Color Black/White
Condition 10 *Lowest to Highest (1= poor, 10 = Excellent)*



Free will donation, commensurate to fair market value

Identification 6281
Category Picture
Description Pope Francis
Size 11" x 14"
Material Paper
Color Mixed Color
Condition 10 *Lowest to Highest (1= poor, 10 = Excellent)*



Free will donation, commensurate to fair market value

Identification 6282
Category Picture
Description Jesus Portrait
Size 14" x 17"
Material Paper
Color Mixed Color
Condition 8 *Lowest to Highest (1= poor, 10 = Excellent)*



Free will donation, commensurate to fair market value

Identification 6298
Category Picture
Description Pope John Paul II
Size 10 1/2" x 13"
Material Paper
Color Mixed Color
Condition 9 *Lowest to Highest (1= poor, 10 = Excellent)*



Free will donation, commensurate to fair market value

WE THANK YOU FOR YOUR GENEROSITY

Donations can be made payable to: RECLAMATION CENTER Mail Stop 100700 P.O. Box 953745 St. Louis, Mo. 63195-3745

5/1/2024

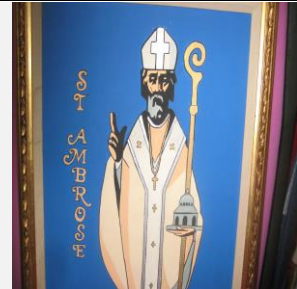
Page 28 of 33

Identification 6299
Category Picture
Description Christ on the Cross
Size 10" x 20"
Material Paper
Color Mixed Color
Condition 10 *Lowest to Highest (1= poor, 10 = Excellent)*



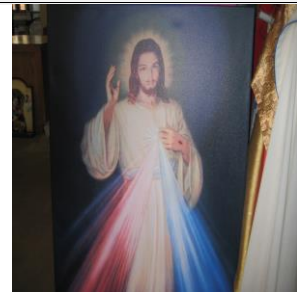
Free will donation, commensurate to fair market value

Identification 6315
Category Picture
Description St. Ambrose
Size 17" x 21"
Material Paper
Color Mixed Color
Condition 9 *Lowest to Highest (1= poor, 10 = Excellent)*



Free will donation, commensurate to fair market value

Identification 6317
Category Picture
Description Divine Mercy
Size 30" x 51"
Material Paper
Color Mixed Color
Condition 10 *Lowest to Highest (1= poor, 10 = Excellent)*



Free will donation, commensurate to fair market value

Identification 6332
Category Picture
Description Last Supper Painting
Size 36" x 36"
Material Canvas
Color Mixed Color
Condition 10 *Lowest to Highest (1= poor, 10 = Excellent)*



Free will donation, commensurate to fair market value

WE THANK YOU FOR YOUR GENEROSITY

Donations can be made payable to: RECLAMATION CENTER Mail Stop 100700 P.O. Box 953745 St. Louis, Mo. 63195-3745

5/1/2024

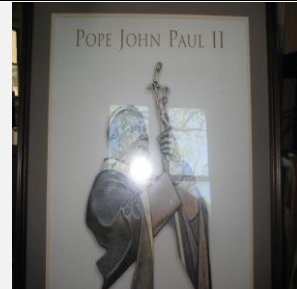
Page 29 of 33

Identification 6436
Category Picture
Description Jesus print
Size 17" x 22"
Material Paper
Color Mixed Color
Condition 10 *Lowest to Highest (1= poor, 10 = Excellent)*



Free will donation, commensurate to fair market value

Identification 6440
Category Picture
Description Pope John Paul II print
Size 24" x 30"
Material Paper
Color Mixed Color
Condition 10 *Lowest to Highest (1= poor, 10 = Excellent)*



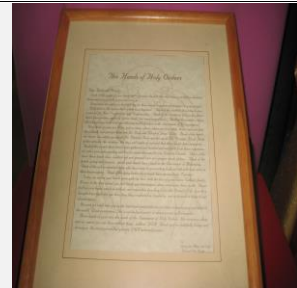
Free will donation, commensurate to fair market value

Identification 6442
Category Picture
Description Our Lady of Perpetual Help
Size 6" x 8"
Material Paper
Color Mixed Color
Condition 9 *Lowest to Highest (1= poor, 10 = Excellent)*



Free will donation, commensurate to fair market value

Identification 6446
Category Picture
Description Hands of Holy Orders print
Size 12" x 15"
Material Paper
Color Brown
Condition 10 *Lowest to Highest (1= poor, 10 = Excellent)*



Free will donation, commensurate to fair market value

WE THANK YOU FOR YOUR GENEROSITY

Donations can be made payable to: RECLAMATION CENTER Mail Stop 100700 P.O. Box 953745 St. Louis, Mo. 63195-3745

5/1/2024

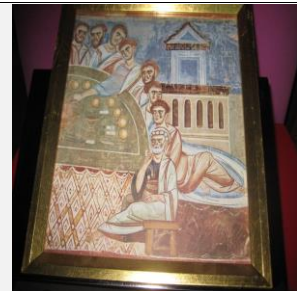
Page 30 of 33

Identification 6457
Category Picture
Description Print of Jesus Christ
Size 8 1/2" x 10 1/2"
Material Paper
Color Mixed Color
Condition 10 *Lowest to Highest (1= poor, 10 = Excellent)*



Free will donation, commensurate to fair market value

Identification 6459
Category Picture
Description Misc Holy Men and Women
Size 10 1/2" x 11"
Material Paper
Color Mixed Color
Condition 9 *Lowest to Highest (1= poor, 10 = Excellent)*



Free will donation, commensurate to fair market value

Identification 6460
Category Picture
Description Misc Holy Men and Women
Size 10 1/4" x 12 1/2"
Material Paper
Color Brown
Condition 9 *Lowest to Highest (1= poor, 10 = Excellent)*



Free will donation, commensurate to fair market value

Identification 6461
Category Picture
Description Misc Holy Men and Women
Size 10 1/4" x 12 1/2"
Material Paper
Color Brown
Condition 9 *Lowest to Highest (1= poor, 10 = Excellent)*



Free will donation, commensurate to fair market value

WE THANK YOU FOR YOUR GENEROSITY

Donations can be made payable to: RECLAMATION CENTER Mail Stop 100700 P.O. Box 953745 St. Louis, Mo. 63195-3745
 5/1/2024 Page 31 of 33

Identification 6462
Category Picture
Description Misc Holy Men and Women
Size 10 1/4" x 12 1/2"
Material Paper
Color Brown
Condition 9 *Lowest to Highest (1= poor, 10 = Excellent)*



Free will donation, commensurate to fair market value

Identification 6463
Category Picture
Description Misc Holy Men and Women
Size 10 1/4" x 12 1/2"
Material Paper
Color Brown
Condition 9 *Lowest to Highest (1= poor, 10 = Excellent)*



Free will donation, commensurate to fair market value

Identification 6464
Category Picture
Description Misc Holy Men and Women
Size 10 1/4" x 12 1/2"
Material Paper
Color Brown
Condition 9 *Lowest to Highest (1= poor, 10 = Excellent)*



Free will donation, commensurate to fair market value

Identification 6465
Category Picture
Description Misc Holy Men and Women
Size 10 1/4" x 12 1/2"
Material Paper
Color Brown
Condition 9 *Lowest to Highest (1= poor, 10 = Excellent)*

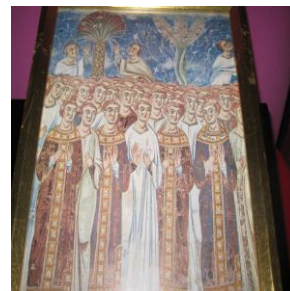


Free will donation, commensurate to fair market value

WE THANK YOU FOR YOUR GENEROSITY

Donations can be made payable to: RECLAMATION CENTER Mail Stop 100700 P.O. Box 953745 St. Louis, Mo. 63195-3745
5/1/2024 Page 32 of 33

Identification 6466
Category Picture
Description Misc Holy Men and Women
Size 10 1/4" x 12 1/2"
Material Paper
Color Brown
Condition 9 *Lowest to Highest (1= poor, 10 = Excellent)*



Free will donation, commensurate to fair market value

Identification 6467
Category Picture
Description Misc Holy Men and Women
Size 10 1/4" x 12 1/2"
Material Paper
Color Brown
Condition 9 *Lowest to Highest (1= poor, 10 = Excellent)*



Free will donation, commensurate to fair market value

Identification 6468
Category Picture
Description Misc Holy Men and Women
Size 10 1/4" x 12 1/2"
Material Paper
Color Brown
Condition 9 *Lowest to Highest (1= poor, 10 = Excellent)*



Free will donation, commensurate to fair market value

Identification 6469
Category Picture
Description Misc Holy Men and Women
Size 10 1/4" x 12 1/2"
Material Paper
Color Brown
Condition 9 *Lowest to Highest (1= poor, 10 = Excellent)*



Free will donation, commensurate to fair market value

WE THANK YOU FOR YOUR GENEROSITY

Donations can be made payable to: RECLAMATION CENTER Mail Stop 100700 P.O. Box 953745 St. Louis, Mo. 63195-3745
 5/1/2024 Page 33 of 33