



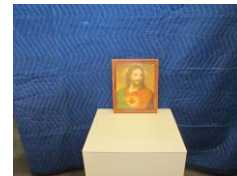
Archdiocese of St. Louis
Reclamation Center
Catalog Category

Category Picture

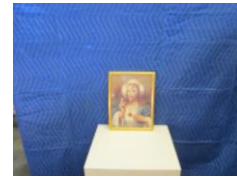
Identification 121
Category Picture
Description Jesus Christ Picture
Size Medium
Material Plastic
Color Misc
Condition 8 *Lowest to Highest (1= poor, 10 = Excellent)*
Item Value *Free will donation, commensurate to fair market value*



Identification 124
Category Picture
Description Jesus Christ Picture
Size 11" x 9"
Material Wood
Color
Condition 8 *Lowest to Highest (1= poor, 10 = Excellent)*
Item Value *Free will donation, commensurate to fair market value*



Identification 126
Category Picture
Description Sacred Heart Jesus Picture
Size 12 3/4" x 9 3/4"
Material Wood
Color
Condition 8 *Lowest to Highest (1= poor, 10 = Excellent)*
Item Value *Free will donation, commensurate to fair market value*



Identification 128
Category Picture
Description Our Lady Of Guadalupe Picture
Size 11 3/4" x 9 1/4"
Material Wood
Color
Condition 8 *Lowest to Highest (1= poor, 10 = Excellent)*
Item Value *Free will donation, commensurate to fair market value*

Identification 131
Category Picture
Description First Communion Picture
Size 9 1/2" x 7"
Material Wood
Color
Condition 8 *Lowest to Highest (1= poor, 10 = Excellent)*
Item Value *Free will donation, commensurate to fair market value*

WE THANK YOU FOR YOUR GENEROSITY

Donations can be made payable to: RECLAMATION CENTER Mail Stop 100700 P.O. Box 953745 St. Louis, Mo. 63195-3745

Identification 222
Category Picture
Description Sacred Heart Jesus Picture
Size
Material Paper
Color
Condition 10 *Lowest to Highest (1= poor, 10 = Excellent)*
Item Value *Free will donation, commensurate to fair market value*

Identification 1476
Category Picture
Description Portrait of Pope Francis
Size 25" x 31"
Material Wood
Color Misc
Condition 10 *Lowest to Highest (1= poor, 10 = Excellent)*
Item Value *Free will donation, commensurate to fair market value*



Identification 1477
Category Picture
Description Portrait of Archbishop Carlson
Size 22" x 18"
Material Wood
Color Misc
Condition 10 *Lowest to Highest (1= poor, 10 = Excellent)*
Item Value *Free will donation, commensurate to fair market value*



Identification 1482
Category Picture
Description Wall Hanger of Christ
Size 33" x 40"
Material Metal
Color Brass
Condition 7 *Lowest to Highest (1= poor, 10 = Excellent)*
Item Value *Free will donation, commensurate to fair market value*

Identification 1772
Category Picture
Description Cure of Ars
Size 12 1/2" x 11 1/2"
Material Paper
Color Black/White
Condition 9 *Lowest to Highest (1= poor, 10 = Excellent)*
Item Value *Free will donation, commensurate to fair market value*



Identification 2186
Category Picture
Description Sacred Heart of Jesus Print
Size 11" x 14"
Material Paper
Color Mixed Color
Condition 10 *Lowest to Highest (1= poor, 10 = Excellent)*
Item Value *Free will donation, commensurate to fair market value*



WE THANK YOU FOR YOUR GENEROSITY

Donations can be made payable to: RECLAMATION CENTER Mail Stop 100700 P.O. Box 953745 St. Louis, Mo. 63195-3745

Identification 2191
Category Picture
Description Angels print
Size 9" x 12"
Material Paper
Color Mixed Color
Condition 7 *Lowest to Highest (1= poor, 10 = Excellent)*
Item Value *Free will donation, commensurate to fair market value*



Identification 2194
Category Picture
Description Our Lady print
Size 11 1/2" x 14 1/2"
Material Paper
Color Mixed Color
Condition 8 *Lowest to Highest (1= poor, 10 = Excellent)*
Item Value *Free will donation, commensurate to fair market value*



Identification 2196
Category Picture
Description Mother Theresa of Calcutta
Size 17" x 14"
Material Paper
Color Mixed Color
Condition 10 *Lowest to Highest (1= poor, 10 = Excellent)*
Item Value *Free will donation, commensurate to fair market value*



Identification 2197
Category Picture
Description Mother Theresa of Calcutta
Size 13 1/2" x 16"
Material Paper
Color Mixed Color
Condition 10 *Lowest to Highest (1= poor, 10 = Excellent)*
Item Value *Free will donation, commensurate to fair market value*



Identification 2200
Category Picture
Description Cardinal Rigali photo
Size 15" x 12"
Material Paper
Color Mixed Color
Condition 10 *Lowest to Highest (1= poor, 10 = Excellent)*
Item Value *Free will donation, commensurate to fair market value*



Identification 2206
Category Picture
Description Resurrection of our Lord print
Size 13" x 10 1/2"
Material Paper
Color Mixed Color
Condition 10 *Lowest to Highest (1= poor, 10 = Excellent)*
Item Value *Free will donation, commensurate to fair market value*



WE THANK YOU FOR YOUR GENEROSITY

Donations can be made payable to: RECLAMATION CENTER Mail Stop 100700 P.O. Box 953745 St. Louis, Mo. 63195-3745

Identification 2207
Category Picture
Description Our Lady of Perpetual Help
Size 16" x 14"
Material Paper
Color Mixed Color
Condition 9 *Lowest to Highest (1= poor, 10 = Excellent)*
Item Value *Free will donation, commensurate to fair market value*



Identification 2208
Category Picture
Description Crucified Christ print
Size 12" x 15"
Material Paper
Color Mixed Color
Condition 10 *Lowest to Highest (1= poor, 10 = Excellent)*
Item Value *Free will donation, commensurate to fair market value*



Identification 2324
Category Picture
Description St. Cecilia
Size 70"
Material Canvas
Color Mixed Color
Condition 8 *Lowest to Highest (1= poor, 10 = Excellent)*
Item Value *Free will donation, commensurate to fair market value*



Identification 2368
Category Picture
Description Portrait of Jesus
Size 32 1/2" x 26 1/2"
Material Paper
Color Mixed Color
Condition 9 *Lowest to Highest (1= poor, 10 = Excellent)*
Item Value *Free will donation, commensurate to fair market value*



Identification 2408
Category Picture
Description Archbishop Rozanski
Size 12" x 15"
Material Paper
Color Mixed Color
Condition 10 *Lowest to Highest (1= poor, 10 = Excellent)*
Item Value *Free will donation, commensurate to fair market value*



Identification 2718
Category Picture
Description Sacred Heart of Jesus
Size 8" x 10"
Material Paper
Color Mixed Color
Condition 10 *Lowest to Highest (1= poor, 10 = Excellent)*
Item Value *Free will donation, commensurate to fair market value*



WE THANK YOU FOR YOUR GENEROSITY

Donations can be made payable to: RECLAMATION CENTER Mail Stop 100700 P.O. Box 953745 St. Louis, Mo. 63195-3745

Identification 2719
Category Picture
Description Last Supper
Size 8" x 10"
Material Paper
Color Mixed Color
Condition 10 *Lowest to Highest (1= poor, 10 = Excellent)*
Item Value *Free will donation, commensurate to fair market value*



Identification 2724
Category Picture
Description Pope John Paul - Papal Visit to Saint Louis
Size 17" x 14"
Material Paper
Color Mixed Color
Condition 10 *Lowest to Highest (1= poor, 10 = Excellent)*
Item Value *Free will donation, commensurate to fair market value*



Identification 2728
Category Picture
Description Assi - Santa Marie deglie Angelic
Size 18" x 7"
Material Paper
Color Mixed Color
Condition 10 *Lowest to Highest (1= poor, 10 = Excellent)*
Item Value *Free will donation, commensurate to fair market value*



Identification 2731
Category Picture
Description Pope John Paul II Papal Visit Banner
Size 29 3/4" x 82"
Material Plastic
Color Mixed Color
Condition 10 *Lowest to Highest (1= poor, 10 = Excellent)*
Item Value *Free will donation, commensurate to fair market value*



Identification 2733
Category Picture
Description Christ
Size 19" x 13 1/2"
Material Paper
Color Mixed Color
Condition 8 *Lowest to Highest (1= poor, 10 = Excellent)*
Item Value *Free will donation, commensurate to fair market value*



Identification 2762
Category Picture
Description Madonna & Child print
Size 8" x 10"
Material Paper
Color Mixed Color
Condition 10 *Lowest to Highest (1= poor, 10 = Excellent)*
Item Value *Free will donation, commensurate to fair market value*



WE THANK YOU FOR YOUR GENEROSITY

Donations can be made payable to: RECLAMATION CENTER Mail Stop 100700 P.O. Box 953745 St. Louis, Mo. 63195-3745

Identification 2763
Category Picture
Description Madona and Child Print
Size 12" x 10"
Material Paper
Color Mixed Color
Condition 9 *Lowest to Highest (1= poor, 10 = Excellent)*
Item Value *Free will donation, commensurate to fair market value*



Identification 2768
Category Picture
Description Jesus Print
Size 28" x 24"
Material Paper
Color Mixed Color
Condition 10 *Lowest to Highest (1= poor, 10 = Excellent)*
Item Value *Free will donation, commensurate to fair market value*



Identification 3011
Category Picture
Description Mary with Child
Size 5 1/2" x 7 1/4"
Material Paper
Color Mixed Color
Condition 10 *Lowest to Highest (1= poor, 10 = Excellent)*
Item Value *Free will donation, commensurate to fair market value*



Identification 3012
Category Picture
Description St Francis of Assisi
Size 8" x 10"
Material Paper
Color Mixed Color
Condition 10 *Lowest to Highest (1= poor, 10 = Excellent)*
Item Value *Free will donation, commensurate to fair market value*

Identification 3013
Category Picture
Description St John Neumann
Size 5" x 7"
Material Paper
Color Mixed Color
Condition 9 *Lowest to Highest (1= poor, 10 = Excellent)*
Item Value *Free will donation, commensurate to fair market value*



Identification 3028
Category Picture
Description Priest Parayer
Size 12" x 13"
Material Paper
Color Mixed Color
Condition 9 *Lowest to Highest (1= poor, 10 = Excellent)*
Item Value *Free will donation, commensurate to fair market value*

WE THANK YOU FOR YOUR GENEROSITY

Donations can be made payable to: RECLAMATION CENTER Mail Stop 100700 P.O. Box 953745 St. Louis, Mo. 63195-3745

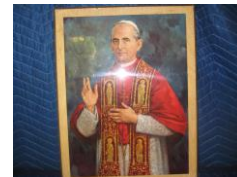
Identification 3029
Category Picture
Description Priest Prayer
Size 8" x 10"
Material
Color
Condition 9 *Lowest to Highest (1= poor, 10 = Excellent)*
Item Value *Free will donation, commensurate to fair market value*



Identification 3057
Category Picture
Description Archbishop Carlson
Size 17" x 14"
Material Paper
Color Mixed Color
Condition 10 *Lowest to Highest (1= poor, 10 = Excellent)*
Item Value *Free will donation, commensurate to fair market value*



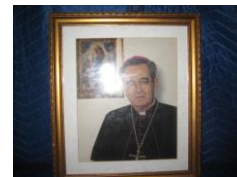
Identification 3058
Category Picture
Description Pope Pius VI
Size 14" x 18"
Material Paper
Color Mixed Color
Condition 10 *Lowest to Highest (1= poor, 10 = Excellent)*
Item Value *Free will donation, commensurate to fair market value*



Identification 3059
Category Picture
Description Cardinal Rigali
Size 13 1/2" x 14 1/2"
Material Paper
Color Mixed Color
Condition 8 *Lowest to Highest (1= poor, 10 = Excellent)*
Item Value *Free will donation, commensurate to fair market value*



Identification 3060
Category Picture
Description Cardinal Rigali
Size 12 3/4" x 14 3/4"
Material Paper
Color Mixed Color
Condition 10 *Lowest to Highest (1= poor, 10 = Excellent)*
Item Value *Free will donation, commensurate to fair market value*



Identification 3061
Category Picture
Description Pope Francis
Size 8" x 10"
Material Paper
Color Mixed Color
Condition 10 *Lowest to Highest (1= poor, 10 = Excellent)*
Item Value *Free will donation, commensurate to fair market value*



WE THANK YOU FOR YOUR GENEROSITY

Donations can be made payable to: RECLAMATION CENTER Mail Stop 100700 P.O. Box 953745 St. Louis, Mo. 63195-3745

Identification 3062
Category Picture
Description Pope John Paul II
Size 11" x 13"
Material Paper
Color Mixed Color
Condition 10 *Lowest to Highest (1= poor, 10 = Excellent)*
Item Value *Free will donation, commensurate to fair market value*



Identification 3063
Category Picture
Description Pope Francis photo
Size 11" x 14"
Material Paper
Color Mixed Color
Condition 8 *Lowest to Highest (1= poor, 10 = Excellent)*
Item Value *Free will donation, commensurate to fair market value*



Identification 3066
Category Picture
Description Pope John Paul II
Size 8" x 10"
Material Paper
Color Mixed Color
Condition 10 *Lowest to Highest (1= poor, 10 = Excellent)*
Item Value *Free will donation, commensurate to fair market value*



Identification 3067
Category Picture
Description Pope Benedict
Size 18" x 22"
Material Paper
Color Mixed Color
Condition 8 *Lowest to Highest (1= poor, 10 = Excellent)*
Item Value *Free will donation, commensurate to fair market value*



Identification 3068
Category Picture
Description Pope Benedict
Size 18 1/2" x 23"
Material Paper
Color Mixed Color
Condition 9 *Lowest to Highest (1= poor, 10 = Excellent)*
Item Value *Free will donation, commensurate to fair market value*



Identification 3072
Category Picture
Description One Body in Christ poster
Size 32" x 24"
Material Paper
Color Mixed Color
Condition 7 *Lowest to Highest (1= poor, 10 = Excellent)*
Item Value *Free will donation, commensurate to fair market value*



WE THANK YOU FOR YOUR GENEROSITY

Donations can be made payable to: RECLAMATION CENTER Mail Stop 100700 P.O. Box 953745 St. Louis, Mo. 63195-3745

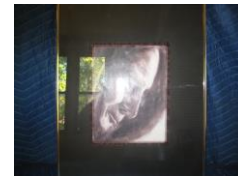
Identification 3073
Category Picture
Description Jean Eudes, Prophete Du Coeur
Size 25" x 14"
Material Paper
Color Mixed Color
Condition 9 *Lowest to Highest (1= poor, 10 = Excellent)*
Item Value *Free will donation, commensurate to fair market value*



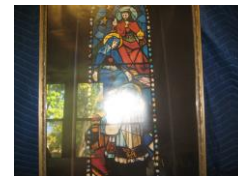
Identification 3074
Category Picture
Description Jean Eudes, Les Pauvres
Size 25" x 14"
Material Paper
Color Mixed Color
Condition 10 *Lowest to Highest (1= poor, 10 = Excellent)*
Item Value *Free will donation, commensurate to fair market value*



Identification 3075
Category Picture
Description Risen Christ "Thy Kingdom Come"
Size 16 1/2" x 20 1/2"
Material Paper
Color Mixed Color
Condition 10 *Lowest to Highest (1= poor, 10 = Excellent)*
Item Value *Free will donation, commensurate to fair market value*



Identification 3076
Category Picture
Description Risen Christ "Thy Kingdom Come"
Size 24 1/2" x 18"
Material Paper
Color Mixed Color
Condition 7 *Lowest to Highest (1= poor, 10 = Excellent)*
Item Value *Free will donation, commensurate to fair market value*



Identification 3078
Category Picture
Description Images of Mary
Size 25 1/2" x 20 1/2"
Material Paper
Color Mixed Color
Condition 10 *Lowest to Highest (1= poor, 10 = Excellent)*
Item Value *Free will donation, commensurate to fair market value*



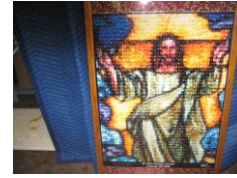
Identification 3081
Category Picture
Description Pieta
Size 19 1/2" x 16 1/2"
Material Paper
Color Mixed Color
Condition 8 *Lowest to Highest (1= poor, 10 = Excellent)*
Item Value *Free will donation, commensurate to fair market value*



WE THANK YOU FOR YOUR GENEROSITY

Donations can be made payable to: RECLAMATION CENTER Mail Stop 100700 P.O. Box 953745 St. Louis, Mo. 63195-3745

Identification 3083
Category Picture
Description Portrait of Christ
Size
Material Paper
Color Mixed Color
Condition 10 *Lowest to Highest (1= poor, 10 = Excellent)*
Item Value *Free will donation, commensurate to fair market value*



Identification 3084
Category Picture
Description Profile of Pope John Paul II
Size 16" x 20"
Material Paper
Color Mixed Color
Condition 10 *Lowest to Highest (1= poor, 10 = Excellent)*
Item Value *Free will donation, commensurate to fair market value*



Identification 3228
Category Picture
Description Our Lady of Perpetual Help
Size 5" x 6"
Material Paper
Color Mixed Color
Condition 9 *Lowest to Highest (1= poor, 10 = Excellent)*
Item Value *Free will donation, commensurate to fair market value*



Identification 3279
Category Picture
Description St. Francis of Assisi
Size 4" x 6"
Material Paper
Color Brown
Condition 10 *Lowest to Highest (1= poor, 10 = Excellent)*
Item Value *Free will donation, commensurate to fair market value*



Identification 3286
Category Picture
Description St Clare of Assisi
Size 16 1/2" x 20 1/2"
Material Paper
Color
Condition 10 *Lowest to Highest (1= poor, 10 = Excellent)*
Item Value *Free will donation, commensurate to fair market value*



Identification 3288
Category Picture
Description St. Clare Receiving Habit
Size 16" x 20"
Material Paper
Color
Condition 10 *Lowest to Highest (1= poor, 10 = Excellent)*
Item Value *Free will donation, commensurate to fair market value*



WE THANK YOU FOR YOUR GENEROSITY

Donations can be made payable to: RECLAMATION CENTER Mail Stop 100700 P.O. Box 953745 St. Louis, Mo. 63195-3745

Identification 3347
Category Picture
Description Common Prayer of Preparation
Size 17" x 13"
Material Paper
Color Mixed Color
Condition 9 *Lowest to Highest (1= poor, 10 = Excellent)*
Item Value *Free will donation, commensurate to fair market value*



Identification 3348
Category Picture
Description Prayer before a Crucifix
Size 12 1/2" x 15 1/2"
Material Paper
Color Mixed Color
Condition 10 *Lowest to Highest (1= poor, 10 = Excellent)*
Item Value *Free will donation, commensurate to fair market value*



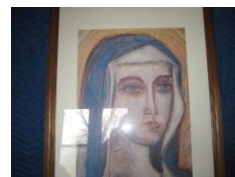
Identification 3403
Category Picture
Description Pope Francis
Size 8" x 10"
Material Paper
Color Mixed Color
Condition 10 *Lowest to Highest (1= poor, 10 = Excellent)*
Item Value *Free will donation, commensurate to fair market value*



Identification 3419
Category Picture
Description St. Francis of Assisi
Size 21" x 30"
Material Paper
Color Mixed Color
Condition 9 *Lowest to Highest (1= poor, 10 = Excellent)*
Item Value *Free will donation, commensurate to fair market value*



Identification 3420
Category Picture
Description St. Claire of Assisi
Size 21" x 30"
Material Paper
Color Mixed Color
Condition 9 *Lowest to Highest (1= poor, 10 = Excellent)*
Item Value *Free will donation, commensurate to fair market value*



Identification 3422
Category Picture
Description Portrait of St. Francis of Assisi
Size 17" x 13"
Material Wood
Color Mixed Color
Condition 9 *Lowest to Highest (1= poor, 10 = Excellent)*
Item Value *Free will donation, commensurate to fair market value*



WE THANK YOU FOR YOUR GENEROSITY

Donations can be made payable to: RECLAMATION CENTER Mail Stop 100700 P.O. Box 953745 St. Louis, Mo. 63195-3745

Identification 3476
Category Picture
Description Our Lady of Guadulope
Size 23" x 14 3/4"
Material Paper
Color
Condition 10 *Lowest to Highest (1= poor, 10 = Excellent)*
Item Value *Free will donation, commensurate to fair market value*



Identification 3477
Category Picture
Description Mother and Child
Size 8" x 10"
Material Paper
Color
Condition 10 *Lowest to Highest (1= poor, 10 = Excellent)*
Item Value *Free will donation, commensurate to fair market value*



Identification 3500
Category Picture
Description Jesus
Size 14" x 16"
Material Paper
Color
Condition 10 *Lowest to Highest (1= poor, 10 = Excellent)*
Item Value *Free will donation, commensurate to fair market value*



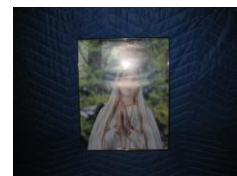
Identification 3556
Category Picture
Description Mother of Perpetual Help
Size 5"x8"
Material Paper
Color Mixed Color
Condition 8 *Lowest to Highest (1= poor, 10 = Excellent)*
Item Value *Free will donation, commensurate to fair market value*



Identification 3557
Category Picture
Description Mother of Perpetual Help
Size 5"x 8"
Material Paper
Color Mixed Color
Condition 8 *Lowest to Highest (1= poor, 10 = Excellent)*
Item Value *Free will donation, commensurate to fair market value*



Identification 3559
Category Picture
Description Our Lady of Fatima
Size 8" x 10"
Material Paper
Color Mixed Color
Condition 9 *Lowest to Highest (1= poor, 10 = Excellent)*
Item Value *Free will donation, commensurate to fair market value*



WE THANK YOU FOR YOUR GENEROSITY

Donations can be made payable to: RECLAMATION CENTER Mail Stop 100700 P.O. Box 953745 St. Louis, Mo. 63195-3745

Identification 3647
Category Picture
Description Jesus
Size 15 1/2" x 15 1/2"
Material Paper
Color Mixed Color
Condition 10 *Lowest to Highest (1= poor, 10 = Excellent)*
Item Value *Free will donation, commensurate to fair market value*



Identification 3707
Category Picture
Description Our Lady of Perpetual Help
Size 9 1/2" x 12"
Material Paper
Color Mixed Color
Condition 10 *Lowest to Highest (1= poor, 10 = Excellent)*
Item Value *Free will donation, commensurate to fair market value*



Identification 3708
Category Picture
Description Mary
Size 10 1/2" x 12 1/2"
Material Paper
Color Mixed Color
Condition 8 *Lowest to Highest (1= poor, 10 = Excellent)*
Item Value *Free will donation, commensurate to fair market value*



Identification 3768
Category Picture
Description Portrait of Mary
Size 12" x 10 1/2"
Material Paper
Color Mixed Color
Condition 7 *Lowest to Highest (1= poor, 10 = Excellent)*
Item Value *Free will donation, commensurate to fair market value*



Identification 3802
Category Picture
Description Portrait of Mary
Size 8" x 10"
Material Wood
Color Mixed Color
Condition 8 *Lowest to Highest (1= poor, 10 = Excellent)*
Item Value *Free will donation, commensurate to fair market value*



Identification 3818
Category Picture
Description Jesus in the Garden
Size 15" x 30 1/2"
Material Paper
Color Mixed Color
Condition 7 *Lowest to Highest (1= poor, 10 = Excellent)*
Item Value *Free will donation, commensurate to fair market value*



WE THANK YOU FOR YOUR GENEROSITY

Donations can be made payable to: RECLAMATION CENTER Mail Stop 100700 P.O. Box 953745 St. Louis, Mo. 63195-3745

Identification 3835
Category Picture
Description St. Jude
Size 12" x 16"
Material Paper
Color Mixed Color
Condition 9 *Lowest to Highest (1= poor, 10 = Excellent)*
Item Value *Free will donation, commensurate to fair market value*



Identification 3915
Category Picture
Description Mary Mother of the Church
Size 27" x 21"
Material Paper
Color Mixed Color
Condition 10 *Lowest to Highest (1= poor, 10 = Excellent)*
Item Value *Free will donation, commensurate to fair market value*



Identification 3916
Category Picture
Description Portrait of Pope John Paul II
Size 20" x 24"
Material Paper
Color Mixed Color
Condition 10 *Lowest to Highest (1= poor, 10 = Excellent)*
Item Value *Free will donation, commensurate to fair market value*



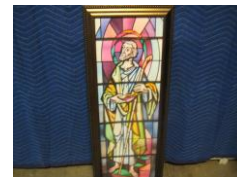
Identification 3923
Category Picture
Description Martyrs of Jesuit University plaque
Size 10" x 13"
Material Wood
Color Mixed Color
Condition 10 *Lowest to Highest (1= poor, 10 = Excellent)*
Item Value *Free will donation, commensurate to fair market value*



Identification 3946
Category Picture
Description Last Supper (Lighted)
Size 13" x 13"
Material Plastic
Color Mixed Color
Condition 8 *Lowest to Highest (1= poor, 10 = Excellent)*
Item Value *Free will donation, commensurate to fair market value*



Identification 3966
Category Picture
Description Saint
Size 14 1/2" x 37"
Material Glass
Color Mixed Color
Condition 10 *Lowest to Highest (1= poor, 10 = Excellent)*
Item Value *Free will donation, commensurate to fair market value*



WE THANK YOU FOR YOUR GENEROSITY

Donations can be made payable to: RECLAMATION CENTER Mail Stop 100700 P.O. Box 953745 St. Louis, Mo. 63195-3745

Identification 4021
Category Picture
Description Jesus Picture
Size
Material
Color Mixed Color
Condition 1 *Lowest to Highest (1= poor, 10 = Excellent)*
Item Value *Free will donation, commensurate to fair market value*

Identification 4115
Category Picture
Description Last Supper
Size 46"
Material Plaster
Color Off White
Condition 10 *Lowest to Highest (1= poor, 10 = Excellent)*
Item Value *Free will donation, commensurate to fair market value*

Identification 4129
Category Picture
Description St Therese of the Child Jesus
Size 9 1/2" x 7"
Material Paper
Color Mixed Color
Condition 10 *Lowest to Highest (1= poor, 10 = Excellent)*
Item Value *Free will donation, commensurate to fair market value*

Identification 4130
Category Picture
Description The Acession of Jesus
Size 14" x 5 1/2"
Material Paper
Color
Condition 10 *Lowest to Highest (1= poor, 10 = Excellent)*
Item Value *Free will donation, commensurate to fair market value*

Identification 4157
Category Picture
Description Portrait of Pope John XXIII
Size 13 1/2" x 17"
Material Paper
Color Mixed Color
Condition 8 *Lowest to Highest (1= poor, 10 = Excellent)*
Item Value *Free will donation, commensurate to fair market value*

Identification 4280
Category Picture
Description Archbishop May picture
Size 10" x 12"
Material
Color
Condition 6 *Lowest to Highest (1= poor, 10 = Excellent)*
Item Value *Free will donation, commensurate to fair market value*

WE THANK YOU FOR YOUR GENEROSITY

Donations can be made payable to: RECLAMATION CENTER Mail Stop 100700 P.O. Box 953745 St. Louis, Mo. 63195-3745

Identification 4281
Category Picture
Description Pope Francis portrait
Size
Material
Color
Condition 10 *Lowest to Highest (1= poor, 10 = Excellent)*
Item Value *Free will donation, commensurate to fair market value*

Identification 4319
Category Picture
Description Pope John Paul II (framed)
Size 5" x 7"
Material Paper
Color Mixed Color
Condition 10 *Lowest to Highest (1= poor, 10 = Excellent)*
Item Value *Free will donation, commensurate to fair market value*

Identification 4354
Category Picture
Description The Nativity of Christ
Size 48" x 38"
Material Wood
Color Mixed Color
Condition 8 *Lowest to Highest (1= poor, 10 = Excellent)*
Item Value *Free will donation, commensurate to fair market value*

Identification 4355
Category Picture
Description The Nativity of Christ
Size 48" x 48"
Material Wood
Color Mixed Color
Condition 8 *Lowest to Highest (1= poor, 10 = Excellent)*
Item Value *Free will donation, commensurate to fair market value*

Identification 4486
Category Picture
Description Last Supper picture
Size 20" x 14"
Material Paper
Color Mixed Color
Condition 8 *Lowest to Highest (1= poor, 10 = Excellent)*
Item Value *Free will donation, commensurate to fair market value*

Identification 4487
Category Picture
Description Pope Pius XII picture
Size 11" x 13"
Material Paper
Color Mixed Color
Condition 7 *Lowest to Highest (1= poor, 10 = Excellent)*
Item Value *Free will donation, commensurate to fair market value*

WE THANK YOU FOR YOUR GENEROSITY

Donations can be made payable to: RECLAMATION CENTER Mail Stop 100700 P.O. Box 953745 St. Louis, Mo. 63195-3745

Identification 4490
Category Picture
Description Pope John XXIII
Size 9" x 7"
Material
Color
Condition 10 *Lowest to Highest (1= poor, 10 = Excellent)*
Item Value *Free will donation, commensurate to fair market value*

Identification 4513
Category Picture
Description Mary and Child Picture
Size
Material
Color
Condition 10 *Lowest to Highest (1= poor, 10 = Excellent)*
Item Value *Free will donation, commensurate to fair market value*

Identification 14021
Category Picture
Description Christ in the Garden
Size
Material Paper
Color Mixed Color
Condition 9 *Lowest to Highest (1= poor, 10 = Excellent)*
Item Value *Free will donation, commensurate to fair market value*

Identification 14022
Category Picture
Description Jesus
Size 8 1/2"
Material Paper
Color Mixed Color
Condition 9 *Lowest to Highest (1= poor, 10 = Excellent)*
Item Value *Free will donation, commensurate to fair market value*

Identification 24020
Category Picture
Description Petia
Size
Material Plaster
Color Mixed Color
Condition 10 *Lowest to Highest (1= poor, 10 = Excellent)*
Item Value *Free will donation, commensurate to fair market value*

WE THANK YOU FOR YOUR GENEROSITY

Donations can be made payable to: RECLAMATION CENTER Mail Stop 100700 P.O. Box 953745 St. Louis, Mo. 63195-3745