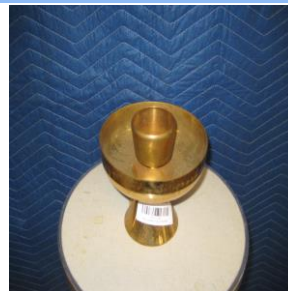


**Archdiocese of St. Louis  
The Reclamation Center  
Item Catalog**

**Category Intinctorium**

**Identification** 1268  
**Category** Intinctorium  
**Description** Intinctorium  
**Size** 6 1/2" x 6"  
**Material** Ceramic  
**Color** White  
**Condition** 6 *Lowest to Highest (1= poor, 10 = Excellent)*



*Free will donation, commensurate to fair market value*

**Identification** 1293  
**Category** Intinctorium  
**Description** Intinctorium  
**Size** 6" x 3 1/2"  
**Material** Metal  
**Color** Gold  
**Condition** 9 *Lowest to Highest (1= poor, 10 = Excellent)*



*Free will donation, commensurate to fair market value*

**Identification** 1298  
**Category** Intinctorium  
**Description** Intinctorium  
**Size** 9" x 6"  
**Material** Metal  
**Color** Gold  
**Condition** 8 *Lowest to Highest (1= poor, 10 = Excellent)*



*Free will donation, commensurate to fair market value*

**Identification** 1445  
**Category** Intinctorium  
**Description** Intinctorium  
**Size** 8" x 5 1/2"  
**Material** Metal  
**Color** Gold  
**Condition** 9 *Lowest to Highest (1= poor, 10 = Excellent)*



*Free will donation, commensurate to fair market value*

WE THANK YOU FOR YOUR GENEROSITY

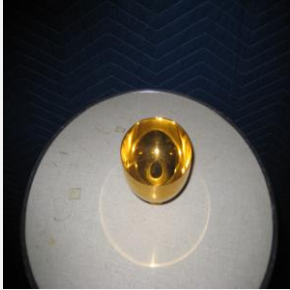
Donations can be made payable to: RECLAMATION CENTER Mail Stop 100700 P.O. Box 953745 St. Louis, Mo. 63195-3745

**Identification** 1680  
**Category** Intinctorium  
**Description** Intinctorium  
**Size** 6"  
**Material** Metal  
**Color** Brass  
**Condition** 6 *Lowest to Highest (1= poor, 10 = Excellent)*



*Free will donation, commensurate to fair market value*

**Identification** 1686  
**Category** Intinctorium  
**Description** Cup  
**Size** 2 1/2" x 3"  
**Material** Metal  
**Color** Gold  
**Condition** 10 *Lowest to Highest (1= poor, 10 = Excellent)*



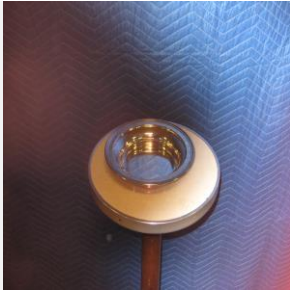
*Free will donation, commensurate to fair market value*

**Identification** 1688  
**Category** Intinctorium  
**Description** Intinctorium  
**Size** 5" x 6"  
**Material** Metal  
**Color** Gold  
**Condition** 10 *Lowest to Highest (1= poor, 10 = Excellent)*



*Free will donation, commensurate to fair market value*

**Identification** 1694  
**Category** Intinctorium  
**Description** Intinctorium  
**Size** 8"  
**Material** Metal  
**Color** Silver and wood  
**Condition** 10 *Lowest to Highest (1= poor, 10 = Excellent)*



*Free will donation, commensurate to fair market value*

**WE THANK YOU FOR YOUR GENEROSITY**

Donations can be made payable to: RECLAMATION CENTER Mail Stop 100700 P.O. Box 953745 St. Louis, Mo. 63195-3745

**Identification** 1791  
**Category** Intinctorium  
**Description** Intinctorium  
**Size** Medium  
**Material** Metal  
**Color** Gold  
**Condition** 10 *Lowest to Highest (1= poor, 10 = Excellent)*



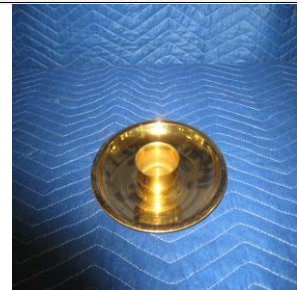
*Free will donation, commensurate to fair market value*

**Identification** 1820  
**Category** Intinctorium  
**Description** Intinctorium  
**Size** Small  
**Material** Metal  
**Color** Silver  
**Condition** 10 *Lowest to Highest (1= poor, 10 = Excellent)*



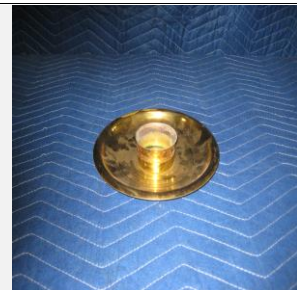
*Free will donation, commensurate to fair market value*

**Identification** 2396  
**Category** Intinctorium  
**Description** Intinctorium  
**Size** 8 1/4"  
**Material** Metal  
**Color** Brass  
**Condition** 8 *Lowest to Highest (1= poor, 10 = Excellent)*



*Free will donation, commensurate to fair market value*

**Identification** 2636  
**Category** Intinctorium  
**Description** Intinctorium  
**Size**  
**Material** Metal  
**Color** Brass  
**Condition** 5 *Lowest to Highest (1= poor, 10 = Excellent)*



*Free will donation, commensurate to fair market value*

WE THANK YOU FOR YOUR GENEROSITY

Donations can be made payable to: RECLAMATION CENTER Mail Stop 100700 P.O. Box 953745 St. Louis, Mo. 63195-3745

4/17/2024

Page 3 of 6

**Identification** 2639  
**Category** Intinctorium  
**Description** Intinctorium  
**Size** Medium  
**Material** Metal  
**Color** Brass  
**Condition** 8 *Lowest to Highest (1= poor, 10 = Excellent)*



*Free will donation, commensurate to fair market value*

**Identification** 2643  
**Category** Intinctorium  
**Description** Intinctorium  
**Size** Medium  
**Material** Metal  
**Color** Brass  
**Condition** 10 *Lowest to Highest (1= poor, 10 = Excellent)*



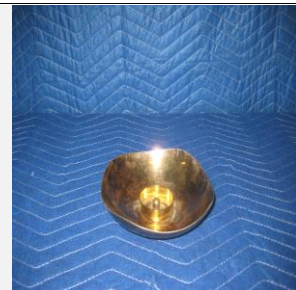
*Free will donation, commensurate to fair market value*

**Identification** 3571  
**Category** Intinctorium  
**Description** Intinctorium  
**Size**  
**Material** Metal  
**Color** Gold  
**Condition** 7 *Lowest to Highest (1= poor, 10 = Excellent)*



*Free will donation, commensurate to fair market value*

**Identification** 3591  
**Category** Intinctorium  
**Description** Intinctorium  
**Size** 6 1/2"  
**Material** Metal  
**Color** Gold  
**Condition** 7 *Lowest to Highest (1= poor, 10 = Excellent)*



*Free will donation, commensurate to fair market value*

WE THANK YOU FOR YOUR GENEROSITY

Donations can be made payable to: RECLAMATION CENTER Mail Stop 100700 P.O. Box 953745 St. Louis, Mo. 63195-3745

4/17/2024

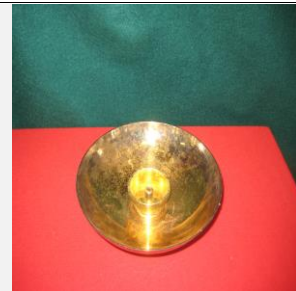
Page 4 of 6

**Identification** 3712  
**Category** Intinctorium  
**Description** Intinctorium  
**Size**  
**Material** Metal  
**Color** Gold  
**Condition** 8 *Lowest to Highest (1= poor, 10 = Excellent)*



*Free will donation, commensurate to fair market value*

**Identification** 4686  
**Category** Intinctorium  
**Description** Intinctorium  
**Size** 7 1/4"  
**Material** Ceramic  
**Color**  
**Condition** 9 *Lowest to Highest (1= poor, 10 = Excellent)*



*Free will donation, commensurate to fair market value*

**Identification** 4687  
**Category** Intinctorium  
**Description** Intinctorium  
**Size** 6"  
**Material** Metal  
**Color** Gold  
**Condition** 10 *Lowest to Highest (1= poor, 10 = Excellent)*



*Free will donation, commensurate to fair market value*

**Identification** 4718  
**Category** Intinctorium  
**Description** Intinctorium  
**Size** 8"  
**Material** Metal  
**Color** Gold  
**Condition** 10 *Lowest to Highest (1= poor, 10 = Excellent)*



*Free will donation, commensurate to fair market value*

WE THANK YOU FOR YOUR GENEROSITY

Donations can be made payable to: RECLAMATION CENTER Mail Stop 100700 P.O. Box 953745 St. Louis, Mo. 63195-3745

4/17/2024

Page 5 of 6

**Identification** 4809  
**Category** Intinctorium  
**Description** Intinctorium  
**Size** 8"  
**Material** Metal  
**Color** Gold  
**Condition** 9

*Lowest to Highest (1= poor, 10 = Excellent)*



*Free will donation, commensurate to fair market value*

**Identification** 5021  
**Category** Intinctorium  
**Description** Intinctorium  
**Size**  
**Material** Metal  
**Color** Gold  
**Condition** 9

*Lowest to Highest (1= poor, 10 = Excellent)*



*Free will donation, commensurate to fair market value*

**Identification** 6289  
**Category** Intinctorium  
**Description** Intinctorium  
**Size**  
**Material** Metal  
**Color** Brass  
**Condition** 9

*Lowest to Highest (1= poor, 10 = Excellent)*



*Free will donation, commensurate to fair market value*

WE THANK YOU FOR YOUR GENEROSITY

Donations can be made payable to: RECLAMATION CENTER Mail Stop 100700 P.O. Box 953745 St. Louis, Mo. 63195-3745

4/17/2024

Page 6 of 6