

**Archdiocese of St. Louis  
The Reclamation Center  
Item Catalog**

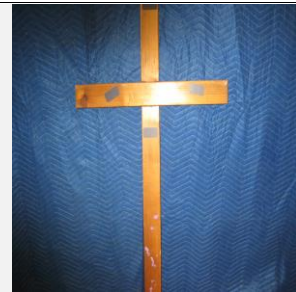
**Category    Crucifix**

**Identification** 1452  
**Category** Crucifix  
**Description** Crucifix  
**Size** 67" x 30" x 2"  
**Material** Wood  
**Color** Brown  
**Condition** 10                      *Lowest to Highest (1= poor, 10 = Excellent)*



*Free will donation, commensurate to fair market value*

**Identification** 1453  
**Category** Crucifix  
**Description** Crucifix  
**Size** 57" x 30" x 1/2"  
**Material** Wood  
**Color** Brown  
**Condition** 8                      *Lowest to Highest (1= poor, 10 = Excellent)*



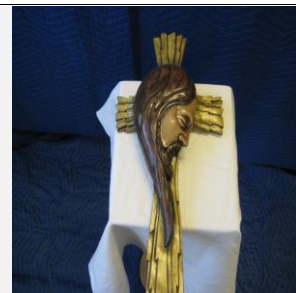
*Free will donation, commensurate to fair market value*

**Identification** 1517  
**Category** Crucifix  
**Description** Crucifix  
**Size** 31" x 7 1/4"  
**Material** Wood  
**Color** Brass  
**Condition** 10                      *Lowest to Highest (1= poor, 10 = Excellent)*



*Free will donation, commensurate to fair market value*

**Identification** 1752  
**Category** Crucifix  
**Description** Crucifix  
**Size** 9" x 17"  
**Material** Ceramic  
**Color** Mixed Color  
**Condition** 9                      *Lowest to Highest (1= poor, 10 = Excellent)*



*Free will donation, commensurate to fair market value*

WE THANK YOU FOR YOUR GENEROSITY

Donations can be made payable to: RECLAMATION CENTER Mail Stop 100700 P.O. Box 953745 St. Louis, Mo. 63195-3745

**Identification** 1898  
**Category** Crucifix  
**Description** Crucifix  
**Size** 36"  
**Material** Wood  
**Color** Brass  
**Condition** 8

*Lowest to Highest (1= poor, 10 = Excellent)*



*Free will donation, commensurate to fair market value*

**Identification** 3809  
**Category** Crucifix  
**Description** Crucifix  
**Size** 10" x 13"  
**Material** Plaster  
**Color** Gold  
**Condition** 10

*Lowest to Highest (1= poor, 10 = Excellent)*



*Free will donation, commensurate to fair market value*

**Identification** 4829  
**Category** Crucifix  
**Description** Cross  
**Size** 30" x 17"  
**Material** Wood  
**Color** Brown  
**Condition** 9

*Lowest to Highest (1= poor, 10 = Excellent)*



*Free will donation, commensurate to fair market value*

**Identification** 5075  
**Category** Crucifix  
**Description** Procession Cross  
**Size** 66"  
**Material** Metal  
**Color** Black  
**Condition** 9

*Lowest to Highest (1= poor, 10 = Excellent)*



*Free will donation, commensurate to fair market value*

WE THANK YOU FOR YOUR GENEROSITY

Donations can be made payable to: RECLAMATION CENTER Mail Stop 100700 P.O. Box 953745 St. Louis, Mo. 63195-3745

4/17/2024

Page 2 of 6

**Identification** 5504  
**Category** Crucifix  
**Description** Crucifix  
**Size** 17" X 9"  
**Material** Plaster  
**Color** Brown  
**Condition** 10

*Lowest to Highest (1= poor, 10 = Excellent)*



*Free will donation, commensurate to fair market value*

**Identification** 5746  
**Category** Crucifix  
**Description** Crucifix  
**Size** 14"  
**Material** Stone  
**Color** Grey  
**Condition** 9

*Lowest to Highest (1= poor, 10 = Excellent)*



*Free will donation, commensurate to fair market value*

**Identification** 5937  
**Category** Crucifix  
**Description** Crucifix  
**Size** 24" x 36"  
**Material** Wood  
**Color** Brown  
**Condition** 8

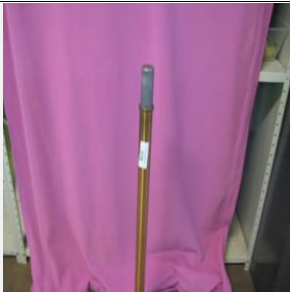
*Lowest to Highest (1= poor, 10 = Excellent)*



*Free will donation, commensurate to fair market value*

**Identification** 5941  
**Category** Crucifix  
**Description** Procession Cross Stand  
**Size** 34"  
**Material** Metal  
**Color** Brass  
**Condition** 8

*Lowest to Highest (1= poor, 10 = Excellent)*



*Free will donation, commensurate to fair market value*

WE THANK YOU FOR YOUR GENEROSITY

Donations can be made payable to: RECLAMATION CENTER Mail Stop 100700 P.O. Box 953745 St. Louis, Mo. 63195-3745

**Identification** 5952  
**Category** Crucifix  
**Description** Crucifix  
**Size** 40" x 59"  
**Material** Wood  
**Color** Brass  
**Condition** 8

*Lowest to Highest (1= poor, 10 = Excellent)*



*Free will donation, commensurate to fair market value*

**Identification** 6118  
**Category** Crucifix  
**Description** Processional Cross  
**Size** 79"  
**Material** Metal  
**Color** Brass  
**Condition** 9

*Lowest to Highest (1= poor, 10 = Excellent)*



*Free will donation, commensurate to fair market value*

**Identification** 6119  
**Category** Crucifix  
**Description** Processional Cross  
**Size** 80"  
**Material** Metal  
**Color** Brass  
**Condition** 7

*Lowest to Highest (1= poor, 10 = Excellent)*



*Free will donation, commensurate to fair market value*

**Identification** 6201  
**Category** Crucifix  
**Description** Crucifix  
**Size** 15"  
**Material** Wood  
**Color** Brown  
**Condition** 9

*Lowest to Highest (1= poor, 10 = Excellent)*



*Free will donation, commensurate to fair market value*

WE THANK YOU FOR YOUR GENEROSITY

Donations can be made payable to: RECLAMATION CENTER Mail Stop 100700 P.O. Box 953745 St. Louis, Mo. 63195-3745

**Identification** 6211  
**Category** Crucifix  
**Description** Crucifix  
**Size** 20"  
**Material** Metal  
**Color** Brass  
**Condition** 10

*Lowest to Highest (1= poor, 10 = Excellent)*



*Free will donation, commensurate to fair market value*

**Identification** 6212  
**Category** Crucifix  
**Description** Crucifix  
**Size** 20"  
**Material** Wood  
**Color** Brown  
**Condition** 10

*Lowest to Highest (1= poor, 10 = Excellent)*



*Free will donation, commensurate to fair market value*

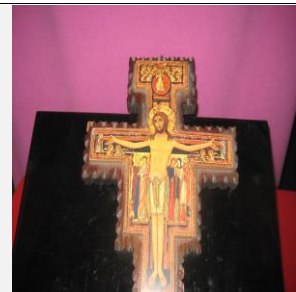
**Identification** 6249  
**Category** Crucifix  
**Description** San Domiano Crucifix  
**Size** 8" x 11"  
**Material** Paper  
**Color** Address Activity  
**Condition** 10

*Lowest to Highest (1= poor, 10 = Excellent)*

*Free will donation, commensurate to fair market value*

**Identification** 6250  
**Category** Crucifix  
**Description** Crucifix  
**Size** 7 1/2" x 10"  
**Material** Wood  
**Color** Mixed Color  
**Condition** 9

*Lowest to Highest (1= poor, 10 = Excellent)*



*Free will donation, commensurate to fair market value*

WE THANK YOU FOR YOUR GENEROSITY

Donations can be made payable to: RECLAMATION CENTER Mail Stop 100700 P.O. Box 953745 St. Louis, Mo. 63195-37

4/17/2024

Page 5 of 6

**Identification** 6254  
**Category** Crucifix  
**Description** Crucifix  
**Size** 11"  
**Material** Wood  
**Color**  
**Condition** 10

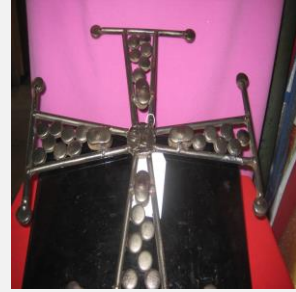
*Lowest to Highest (1= poor, 10 = Excellent)*



*Free will donation, commensurate to fair market value*

**Identification** 6312  
**Category** Crucifix  
**Description** Crucifix  
**Size** 15"  
**Material** Metal  
**Color** Silver  
**Condition** 9

*Lowest to Highest (1= poor, 10 = Excellent)*



*Free will donation, commensurate to fair market value*

WE THANK YOU FOR YOUR GENEROSITY

Donations can be made payable to: RECLAMATION CENTER Mail Stop 100700 P.O. Box 953745 St. Louis, Mo. 63195-3745

4/17/2024

Page 6 of 6