

**Archdiocese of St. Louis
The Reclamation Center
Item Catalog**

Category Chrismatory

Identification 372

Category Chrismatory

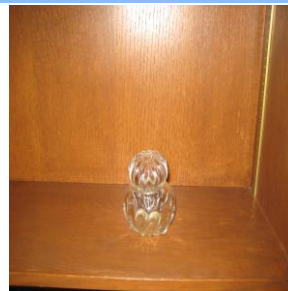
Description Holy Oil Container

Size

Material Glass

Color Clear

Condition 5 *Lowest to Highest (1= poor, 10 = Excellent)*



Free will donation, commensurate to fair market value

Identification 1755

Category Chrismatory

Description Chrismatory Display Case

Size 12" x 15 1/2"

Material Plastic

Color Clear

Condition 9 *Lowest to Highest (1= poor, 10 = Excellent)*



Free will donation, commensurate to fair market value

Identification 1774

Category Chrismatory

Description Chrismatory Oil set

Size

Material Metal

Color Brass

Condition 5 *Lowest to Highest (1= poor, 10 = Excellent)*



Free will donation, commensurate to fair market value

Identification 1905

Category Chrismatory

Description Chrismatory set

Size

Material Glass

Color Clear

Condition 10 *Lowest to Highest (1= poor, 10 = Excellent)*

Free will donation, commensurate to fair market value

WE THANK YOU FOR YOUR GENEROSITY

Donations can be made payable to: RECLAMATION CENTER Mail Stop 100700 P.O. Box 953745 St. Louis, Mo. 63195-3745

5/1/2024

Page 1 of 4

Identification 2220
Category Chrismatory
Description Chrismatory OI
Size
Material Glass
Color Clear
Condition 10 *Lowest to Highest (1= poor, 10 = Excellent)*



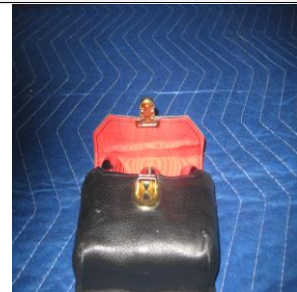
Free will donation, commensurate to fair market value

Identification 2221
Category Chrismatory
Description Chrismatory OC
Size
Material Glass
Color Clear
Condition 10 *Lowest to Highest (1= poor, 10 = Excellent)*



Free will donation, commensurate to fair market value

Identification 3113
Category Chrismatory
Description Anointing Oil stock
Size
Material
Color Black
Condition 10 *Lowest to Highest (1= poor, 10 = Excellent)*



Free will donation, commensurate to fair market value

Identification 3815
Category Chrismatory
Description Sacred Oil Vessel
Size 3"
Material Glass
Color Clear
Condition 9 *Lowest to Highest (1= poor, 10 = Excellent)*



Free will donation, commensurate to fair market value

WE THANK YOU FOR YOUR GENEROSITY

Donations can be made payable to: RECLAMATION CENTER Mail Stop 100700 P.O. Box 953745 St. Louis, Mo. 63195-3745

5/1/2024

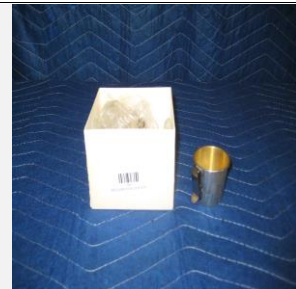
Page 2 of 4

Identification 3848
Category Chrismatory
Description Holy Oil Vials
Size 6" x 2 1/2"
Material Glass
Color Clear
Condition 10 *Lowest to Highest (1= poor, 10 = Excellent)*



Free will donation, commensurate to fair market value

Identification 3851
Category Chrismatory
Description Chrismatory
Size
Material Metal
Color Gold/Silver
Condition 10 *Lowest to Highest (1= poor, 10 = Excellent)*



Free will donation, commensurate to fair market value

Identification 4103
Category Chrismatory
Description Chrismatory
Size
Material
Color
Condition 8 *Lowest to Highest (1= poor, 10 = Excellent)*



Free will donation, commensurate to fair market value

Identification 6065
Category Chrismatory
Description Holy Oil
Size
Material Metal
Color
Condition 10 *Lowest to Highest (1= poor, 10 = Excellent)*



Free will donation, commensurate to fair market value

WE THANK YOU FOR YOUR GENEROSITY

Donations can be made payable to: RECLAMATION CENTER Mail Stop 100700 P.O. Box 953745 St. Louis, Mo. 63195-3745

5/1/2024

Page 3 of 4

Identification 6223
Category Chrismatory
Description Chrismatory Set
Size
Material Glass
Color Clear
Condition 10

Lowest to Highest (1= poor, 10 = Excellent)



Free will donation, commensurate to fair market value

WE THANK YOU FOR YOUR GENEROSITY

Donations can be made payable to: RECLAMATION CENTER Mail Stop 100700 P.O. Box 953745 St. Louis, Mo. 63195-3745

5/1/2024

Page 4 of 4