





**Archdiocese of St. Louis
The Reclamation Center
Item Catalog**

Category Chalice		
Identification	447	
Category	Chalice	
Description	Chalice	
Size	8 1/2"x5"	
Material	Metal	
Color	Gold	
Condition	7	
		<i>Lowest to Highest (1= poor, 10 = Excellent)</i>
<i>Free will donation, commensurate to fair market value</i>		
Identification	448	
Category	Chalice	
Description	Chalice	
Size	6 1/2"x4"	
Material	Metal	
Color	Gold	
Condition	9	
		<i>Lowest to Highest (1= poor, 10 = Excellent)</i>
<i>Free will donation, commensurate to fair market value</i>		
Identification	474	
Category	Chalice	
Description	Chalice	
Size	7 1/2"x5"	
Material	Metal	
Color	Gold	
Condition	2	
		<i>Lowest to Highest (1= poor, 10 = Excellent)</i>
<i>Free will donation, commensurate to fair market value</i>		
Identification	476	
Category	Chalice	
Description	Chalice	
Size	6"x5"	
Material	Metal	
Color	Gold	
Condition	4	
		<i>Lowest to Highest (1= poor, 10 = Excellent)</i>
<i>Free will donation, commensurate to fair market value</i>		

WE THANK YOU FOR YOUR GENEROSITY

Donations can be made payable to: RECLAMATION CENTER Mail Stop 100700 P.O. Box 953745 St. Louis, Mo. 63195-3745

4/24/2024

Page 1 of 24

Identification 478
Category Chalice
Description Chalice
Size 8" x 5 1/2"
Material Metal
Color Gold
Condition 6 *Lowest to Highest (1= poor, 10 = Excellent)*



Free will donation, commensurate to fair market value

Identification 486
Category Chalice
Description Chalice
Size 8" x 5 1/2"
Material Metal
Color Gold
Condition 4 *Lowest to Highest (1= poor, 10 = Excellent)*



Free will donation, commensurate to fair market value

Identification 524
Category Chalice
Description Chalice
Size 6 1/2"x4 1/2"
Material Metal
Color Gold
Condition 3 *Lowest to Highest (1= poor, 10 = Excellent)*



Free will donation, commensurate to fair market value

Identification 530
Category Chalice
Description Chalice
Size 6"x4"
Material Ceramic
Color Gold
Condition 9 *Lowest to Highest (1= poor, 10 = Excellent)*



Free will donation, commensurate to fair market value

WE THANK YOU FOR YOUR GENEROSITY

Donations can be made payable to: RECLAMATION CENTER Mail Stop 100700 P.O. Box 953745 St. Louis, Mo. 63195-3745

4/24/2024

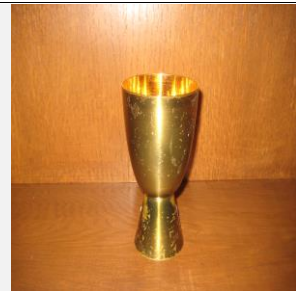
Page 2 of 24

Identification 533
Category Chalice
Description Chalice
Size 6 1/4"x3"
Material Ceramic
Color Mixed Color
Condition 10 *Lowest to Highest (1= poor, 10 = Excellent)*



Free will donation, commensurate to fair market value

Identification 553
Category Chalice
Description Chalice
Size 6"x2"
Material Metal
Color Gold
Condition 6 *Lowest to Highest (1= poor, 10 = Excellent)*



Free will donation, commensurate to fair market value

Identification 1326
Category Chalice
Description Chalice
Size 8" x 4"
Material Metal
Color Gold
Condition 8 *Lowest to Highest (1= poor, 10 = Excellent)*



Free will donation, commensurate to fair market value

Identification 1327
Category Chalice
Description Chalice
Size 6 1/2" x 4"
Material Metal
Color Gold
Condition 9 *Lowest to Highest (1= poor, 10 = Excellent)*



Free will donation, commensurate to fair market value

WE THANK YOU FOR YOUR GENEROSITY

Donations can be made payable to: RECLAMATION CENTER Mail Stop 100700 P.O. Box 953745 St. Louis, Mo. 63195-3745

4/24/2024

Page 3 of 24

Identification 1747
Category Chalice
Description Chalice
Size
Material Metal
Color Gold
Condition 6

Lowest to Highest (1= poor, 10 = Excellent)



Free will donation, commensurate to fair market value

Identification 1800
Category Chalice
Description Chalice
Size Small
Material Metal
Color Gold
Condition 7

Lowest to Highest (1= poor, 10 = Excellent)



Free will donation, commensurate to fair market value

Identification 1801
Category Chalice
Description Chalice
Size Large
Material Metal
Color Gold
Condition 7

Lowest to Highest (1= poor, 10 = Excellent)



Free will donation, commensurate to fair market value

Identification 1803
Category Chalice
Description Chalice
Size Small
Material Metal
Color Gold
Condition 6

Lowest to Highest (1= poor, 10 = Excellent)



Free will donation, commensurate to fair market value

WE THANK YOU FOR YOUR GENEROSITY

Donations can be made payable to: RECLAMATION CENTER Mail Stop 100700 P.O. Box 953745 St. Louis, Mo. 63195-3745

4/24/2024

Page 4 of 24

Identification 1806
Category Chalice
Description Chalice
Size Medium
Material Metal
Color Gold
Condition 7

Lowest to Highest (1= poor, 10 = Excellent)



Free will donation, commensurate to fair market value

Identification 1808
Category Chalice
Description Chalice
Size Large
Material Metal
Color Gold
Condition 6

Lowest to Highest (1= poor, 10 = Excellent)



Free will donation, commensurate to fair market value

Identification 1809
Category Chalice
Description Chalice
Size Small
Material Metal
Color Gold
Condition 6

Lowest to Highest (1= poor, 10 = Excellent)



Free will donation, commensurate to fair market value

Identification 1815
Category Chalice
Description Chalice
Size Medium
Material Metal
Color Gold
Condition 7

Lowest to Highest (1= poor, 10 = Excellent)



Free will donation, commensurate to fair market value

WE THANK YOU FOR YOUR GENEROSITY

Donations can be made payable to: RECLAMATION CENTER Mail Stop 100700 P.O. Box 953745 St. Louis, Mo. 63195-3745

4/24/2024

Page 5 of 24

Identification 2000
Category Chalice
Description Chalice
Size 7" x 3"
Material Metal
Color Silver
Condition 9

Lowest to Highest (1= poor, 10 = Excellent)



Free will donation, commensurate to fair market value

Identification 2004
Category Chalice
Description Chalice
Size 7" x 5 1/2"
Material Metal
Color Gold
Condition 7

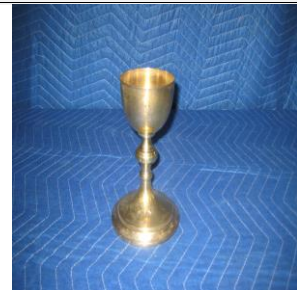
Lowest to Highest (1= poor, 10 = Excellent)



Free will donation, commensurate to fair market value

Identification 2008
Category Chalice
Description Chalice (Knight)
Size 5 1/2" x 8"
Material Metal
Color Gold
Condition 7

Lowest to Highest (1= poor, 10 = Excellent)



Free will donation, commensurate to fair market value

Identification 2009
Category Chalice
Description Chalice
Size 5" x 8"
Material Metal
Color Gold
Condition 8

Lowest to Highest (1= poor, 10 = Excellent)



Free will donation, commensurate to fair market value

WE THANK YOU FOR YOUR GENEROSITY

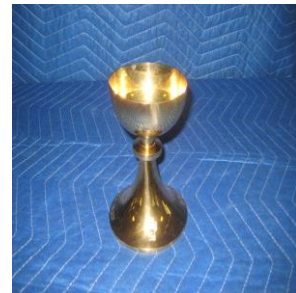
Donations can be made payable to: RECLAMATION CENTER Mail Stop 100700 P.O. Box 953745 St. Louis, Mo. 63195-3745

4/24/2024

Page 6 of 24

Identification 2012
Category Chalice
Description Chalice (Knight)
Size 5" x 6 1/2"
Material Metal
Color Gold
Condition 9

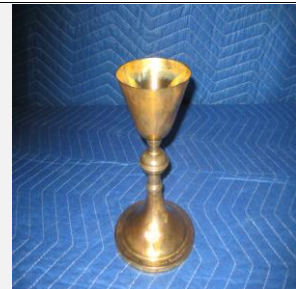
Lowest to Highest (1= poor, 10 = Excellent)



Free will donation, commensurate to fair market value

Identification 2014
Category Chalice
Description Chalice
Size 5 1/2" x 8"
Material Metal
Color Gold
Condition 6

Lowest to Highest (1= poor, 10 = Excellent)



Free will donation, commensurate to fair market value

Identification 2016
Category Chalice
Description Chalice
Size 5" x 7 1/2"
Material Metal
Color Gold
Condition 6

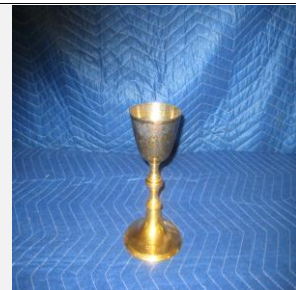
Lowest to Highest (1= poor, 10 = Excellent)



Free will donation, commensurate to fair market value

Identification 2275
Category Chalice
Description Chalice
Size 4 3/4" x 8"
Material Metal
Color Gold
Condition 7

Lowest to Highest (1= poor, 10 = Excellent)



Free will donation, commensurate to fair market value

WE THANK YOU FOR YOUR GENEROSITY

Donations can be made payable to: RECLAMATION CENTER Mail Stop 100700 P.O. Box 953745 St. Louis, Mo. 63195-3745

4/24/2024

Page 7 of 24

Identification 3381
Category Chalice
Description Chalice
Size 8"
Material Metal
Color Gold
Condition 7

Lowest to Highest (1= poor, 10 = Excellent)



Free will donation, commensurate to fair market value

Identification 3382
Category Chalice
Description Chalice
Size 7"
Material Metal
Color Gold
Condition 7

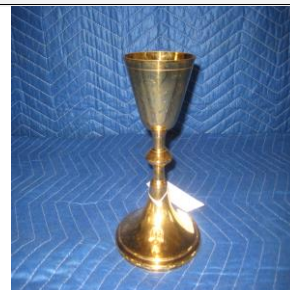
Lowest to Highest (1= poor, 10 = Excellent)



Free will donation, commensurate to fair market value

Identification 3448
Category Chalice
Description Chalice (Knights) from Catholic Education Office
Size
Material Metal
Color Gold
Condition 10

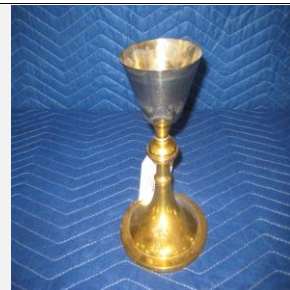
Lowest to Highest (1= poor, 10 = Excellent)



Free will donation, commensurate to fair market value

Identification 3534
Category Chalice
Description Knight's Chalice
Size 8"
Material Metal
Color Gold
Condition 7

Lowest to Highest (1= poor, 10 = Excellent)



Free will donation, commensurate to fair market value

WE THANK YOU FOR YOUR GENEROSITY

Donations can be made payable to: RECLAMATION CENTER Mail Stop 100700 P.O. Box 953745 St. Louis, Mo. 63195-3745

4/24/2024

Page 8 of 24

Identification 3536
Category Chalice
Description Chalice
Size 8"
Material Metal
Color Gold
Condition 7

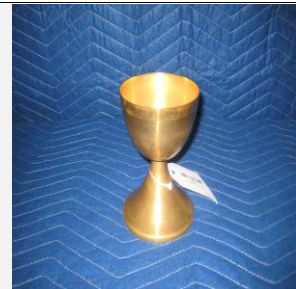
Lowest to Highest (1= poor, 10 = Excellent)



Free will donation, commensurate to fair market value

Identification 3638
Category Chalice
Description Chalice
Size
Material Metal
Color Gold
Condition 5

Lowest to Highest (1= poor, 10 = Excellent)



Free will donation, commensurate to fair market value

Identification 3698
Category Chalice
Description Chalice
Size Small
Material Marble
Color Gold
Condition 10

Lowest to Highest (1= poor, 10 = Excellent)



Free will donation, commensurate to fair market value

Identification 3723
Category Chalice
Description Chalice
Size
Material Metal
Color Gold
Condition 8

Lowest to Highest (1= poor, 10 = Excellent)



Free will donation, commensurate to fair market value

WE THANK YOU FOR YOUR GENEROSITY

Donations can be made payable to: RECLAMATION CENTER Mail Stop 100700 P.O. Box 953745 St. Louis, Mo. 63195-3745

4/24/2024

Page 9 of 24

Identification 4086
Category Chalice
Description Chalice
Size 4 1/2" x 6"
Material Metal
Color Gold
Condition 10

Lowest to Highest (1= poor, 10 = Excellent)



Free will donation, commensurate to fair market value

Identification 4170
Category Chalice
Description Chalice
Size 6 1/2"
Material Metal
Color Gold
Condition 6

Lowest to Highest (1= poor, 10 = Excellent)



Free will donation, commensurate to fair market value

Identification 4537
Category Chalice
Description Chalice
Size 7"
Material Metal
Color Gold
Condition 8

Lowest to Highest (1= poor, 10 = Excellent)



Free will donation, commensurate to fair market value

Identification 4680
Category Chalice
Description Chalice w/Case
Size 6"
Material Metal
Color Gold
Condition 10

Lowest to Highest (1= poor, 10 = Excellent)



Free will donation, commensurate to fair market value

WE THANK YOU FOR YOUR GENEROSITY

Donations can be made payable to: RECLAMATION CENTER Mail Stop 100700 P.O. Box 953745 St. Louis, Mo. 63195-3745

4/24/2024

Page 10 of 24

Identification 4721
Category Chalice
Description Chalice
Size 6" x 4"
Material Metal
Color Gold
Condition 10

Lowest to Highest (1= poor, 10 = Excellent)



Free will donation, commensurate to fair market value

Identification 4731
Category Chalice
Description Chalice
Size 8"
Material Metal
Color Gold
Condition 10

Lowest to Highest (1= poor, 10 = Excellent)



Free will donation, commensurate to fair market value

Identification 4796
Category Chalice
Description Chalice
Size
Material Metal
Color Gold
Condition 7

Lowest to Highest (1= poor, 10 = Excellent)



Free will donation, commensurate to fair market value

Identification 5003
Category Chalice
Description Chalice
Size 11"
Material Metal
Color Gold
Condition 10

Lowest to Highest (1= poor, 10 = Excellent)

Free will donation, commensurate to fair market value

WE THANK YOU FOR YOUR GENEROSITY

Donations can be made payable to: RECLAMATION CENTER Mail Stop 100700 P.O. Box 953745 St. Louis, Mo. 63195-3745

4/24/2024

Page 11 of 24

Identification 5010
Category Chalice
Description Chalice
Size 6 1/2"
Material Metal
Color Silver
Condition 8

Lowest to Highest (1= poor, 10 = Excellent)



Free will donation, commensurate to fair market value

Identification 5047
Category Chalice
Description Chalice
Size
Material Metal
Color Gold
Condition 8

Lowest to Highest (1= poor, 10 = Excellent)

Free will donation, commensurate to fair market value

Identification 5050
Category Chalice
Description Knights of Columbus Chalice
Size 8 1/4" x 5 1/4"
Material Metal
Color Gold
Condition 8

Lowest to Highest (1= poor, 10 = Excellent)



Free will donation, commensurate to fair market value

Identification 5052
Category Chalice
Description Chalice
Size 8 x 5 1/4"
Material Metal
Color Gold
Condition 9

Lowest to Highest (1= poor, 10 = Excellent)

Free will donation, commensurate to fair market value



WE THANK YOU FOR YOUR GENEROSITY

Donations can be made payable to: RECLAMATION CENTER Mail Stop 100700 P.O. Box 953745 St. Louis, Mo. 63195-3745

4/24/2024

Page 12 of 24

Identification 5054
Category Chalice
Description Knights of Colombus Chalice
Size 8 1/4" x 5 1/4"
Material Metal
Color Gold
Condition 9 *Lowest to Highest (1= poor, 10 = Excellent)*



Free will donation, commensurate to fair market value

Identification 5068
Category Chalice
Description Chalice
Size 6"x 3 1/4"
Material Metal
Color Gold
Condition 8 *Lowest to Highest (1= poor, 10 = Excellent)*



Free will donation, commensurate to fair market value

Identification 5071
Category Chalice
Description Knights of Columbus Chalice
Size 7 3/4" x 5"
Material Metal
Color Gold
Condition 10 *Lowest to Highest (1= poor, 10 = Excellent)*



Free will donation, commensurate to fair market value

Identification 5124
Category Chalice
Description Chalice w/case
Size 7" x 3 1/2"
Material Metal
Color Gold
Condition 10 *Lowest to Highest (1= poor, 10 = Excellent)*



Free will donation, commensurate to fair market value

WE THANK YOU FOR YOUR GENEROSITY

Donations can be made payable to: RECLAMATION CENTER Mail Stop 100700 P.O. Box 953745 St. Louis, Mo. 63195-3745

4/24/2024

Page 13 of 24

Identification 5145
Category Chalice
Description Chalice
Size Small
Material Metal
Color Gold
Condition 6

Lowest to Highest (1= poor, 10 = Excellent)



Free will donation, commensurate to fair market value

Identification 5411
Category Chalice
Description Chalice
Size
Material Metal
Color Silver
Condition 7

Lowest to Highest (1= poor, 10 = Excellent)



Free will donation, commensurate to fair market value

Identification 5451
Category Chalice
Description Chalice
Size 7 1/2"
Material Metal
Color Gold
Condition 9

Lowest to Highest (1= poor, 10 = Excellent)



Free will donation, commensurate to fair market value

Identification 5484
Category Chalice
Description Chalice
Size
Material Marble
Color Gold
Condition 7

Lowest to Highest (1= poor, 10 = Excellent)



Free will donation, commensurate to fair market value

WE THANK YOU FOR YOUR GENEROSITY

Donations can be made payable to: RECLAMATION CENTER Mail Stop 100700 P.O. Box 953745 St. Louis, Mo. 63195-3745

4/24/2024

Page 14 of 24

Identification 5614
Category Chalice
Description Chalice
Size 7"
Material Metal
Color Gold
Condition 8

Lowest to Highest (1= poor, 10 = Excellent)



Free will donation, commensurate to fair market value

Identification 5931
Category Chalice
Description Chalice
Size 7 1/2"
Material Metal
Color Gold
Condition 9

Lowest to Highest (1= poor, 10 = Excellent)



Free will donation, commensurate to fair market value

Identification 5932
Category Chalice
Description Chalice
Size
Material Metal
Color Gold
Condition 8

Lowest to Highest (1= poor, 10 = Excellent)



Free will donation, commensurate to fair market value

Identification 6018
Category Chalice
Description Chalice
Size 8"
Material Metal
Color Gold
Condition 10

Lowest to Highest (1= poor, 10 = Excellent)



Free will donation, commensurate to fair market value

WE THANK YOU FOR YOUR GENEROSITY

Donations can be made payable to: RECLAMATION CENTER Mail Stop 100700 P.O. Box 953745 St. Louis, Mo. 63195-3745

4/24/2024

Page 15 of 24

Identification 6043
Category Chalice
Description Chalice
Size 7"
Material Metal
Color Gold
Condition 10

Lowest to Highest (1= poor, 10 = Excellent)



Free will donation, commensurate to fair market value

Identification 6044
Category Chalice
Description Knight Chalice
Size
Material Metal
Color Gold
Condition 7

Lowest to Highest (1= poor, 10 = Excellent)



Free will donation, commensurate to fair market value

Identification 6179
Category Chalice
Description Knight Chalice
Size
Material Metal
Color Gold
Condition 8

Lowest to Highest (1= poor, 10 = Excellent)



Free will donation, commensurate to fair market value

Identification 6213
Category Chalice
Description Knight Chalice
Size
Material Metal
Color Gold
Condition 10

Lowest to Highest (1= poor, 10 = Excellent)



Free will donation, commensurate to fair market value

WE THANK YOU FOR YOUR GENEROSITY

Donations can be made payable to: RECLAMATION CENTER Mail Stop 100700 P.O. Box 953745 St. Louis, Mo. 63195-3745

4/24/2024

Page 16 of 24

Identification 6214
Category Chalice
Description Chalice Display Casse
Size 10" x 16"
Material Wood
Color Brown
Condition 9 *Lowest to Highest (1= poor, 10 = Excellent)*



Free will donation, commensurate to fair market value

Identification 6308
Category Chalice
Description Chalice
Size
Material Metal
Color Gold
Condition 9 *Lowest to Highest (1= poor, 10 = Excellent)*



Free will donation, commensurate to fair market value

Identification 6347
Category Chalice
Description Chalice
Size Medium
Material Metal
Color Gold
Condition 9 *Lowest to Highest (1= poor, 10 = Excellent)*



Free will donation, commensurate to fair market value

Identification 6348
Category Chalice
Description Knight Chalice
Size Large
Material Metal
Color Gold
Condition 8 *Lowest to Highest (1= poor, 10 = Excellent)*



Free will donation, commensurate to fair market value

WE THANK YOU FOR YOUR GENEROSITY

Donations can be made payable to: RECLAMATION CENTER Mail Stop 100700 P.O. Box 953745 St. Louis, Mo. 63195-3745

4/24/2024

Page 17 of 24

Identification 6349
Category Chalice
Description Chalice
Size Large
Material Metal
Color Gold
Condition 9

Lowest to Highest (1= poor, 10 = Excellent)



Free will donation, commensurate to fair market value

Identification 6350
Category Chalice
Description Chalice
Size Large
Material Metal
Color Gold
Condition 8

Lowest to Highest (1= poor, 10 = Excellent)



Free will donation, commensurate to fair market value

Identification 6351
Category Chalice
Description Chalice
Size Medium
Material Metal
Color Gold
Condition 9

Lowest to Highest (1= poor, 10 = Excellent)



Free will donation, commensurate to fair market value

Identification 6352
Category Chalice
Description Knight Chalice
Size Large
Material Metal
Color Gold
Condition 9

Lowest to Highest (1= poor, 10 = Excellent)



Free will donation, commensurate to fair market value

WE THANK YOU FOR YOUR GENEROSITY

Donations can be made payable to: RECLAMATION CENTER Mail Stop 100700 P.O. Box 953745 St. Louis, Mo. 63195-3745

4/24/2024

Page 18 of 24

Identification 6353
Category Chalice
Description Chalice
Size Medium
Material Metal
Color Gold
Condition 7

Lowest to Highest (1= poor, 10 = Excellent)



Free will donation, commensurate to fair market value

Identification 6354
Category Chalice
Description Chalice
Size Medium
Material Metal
Color Gold
Condition 8

Lowest to Highest (1= poor, 10 = Excellent)



Free will donation, commensurate to fair market value

Identification 6357
Category Chalice
Description Chalice
Size Small
Material Metal
Color Gold
Condition 8

Lowest to Highest (1= poor, 10 = Excellent)



Free will donation, commensurate to fair market value

Identification 6358
Category Chalice
Description Chalice
Size Medium
Material Metal
Color Gold
Condition 8

Lowest to Highest (1= poor, 10 = Excellent)



Free will donation, commensurate to fair market value

WE THANK YOU FOR YOUR GENEROSITY

Donations can be made payable to: RECLAMATION CENTER Mail Stop 100700 P.O. Box 953745 St. Louis, Mo. 63195-3745

4/24/2024

Page 19 of 24

Identification 6359
Category Chalice
Description Chalice
Size Medium
Material Metal
Color Gold
Condition 7

Lowest to Highest (1= poor, 10 = Excellent)



Free will donation, commensurate to fair market value

Identification 6360
Category Chalice
Description Chalice
Size Medium
Material Metal
Color Gold
Condition 7

Lowest to Highest (1= poor, 10 = Excellent)



Free will donation, commensurate to fair market value

Identification 6361
Category Chalice
Description Chalice
Size Medium
Material Metal
Color Gold
Condition 7

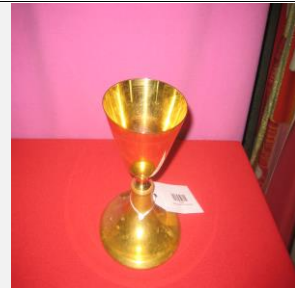
Lowest to Highest (1= poor, 10 = Excellent)



Free will donation, commensurate to fair market value

Identification 6362
Category Chalice
Description Chalice
Size Medium
Material Metal
Color Gold
Condition 9

Lowest to Highest (1= poor, 10 = Excellent)



Free will donation, commensurate to fair market value

WE THANK YOU FOR YOUR GENEROSITY

Donations can be made payable to: RECLAMATION CENTER Mail Stop 100700 P.O. Box 953745 St. Louis, Mo. 63195-3745

4/24/2024

Page 20 of 24

Identification 6363
Category Chalice
Description Chalice
Size Medium
Material Metal
Color Gold
Condition 7

Lowest to Highest (1= poor, 10 = Excellent)



Free will donation, commensurate to fair market value

Identification 6364
Category Chalice
Description Chalice
Size Medium
Material Metal
Color Gold
Condition 9

Lowest to Highest (1= poor, 10 = Excellent)



Free will donation, commensurate to fair market value

Identification 6365
Category Chalice
Description Chalice
Size Large
Material Metal
Color Gold
Condition 10

Lowest to Highest (1= poor, 10 = Excellent)



Free will donation, commensurate to fair market value

Identification 6368
Category Chalice
Description Chalice
Size Large
Material Metal
Color Gold
Condition 10

Lowest to Highest (1= poor, 10 = Excellent)



Free will donation, commensurate to fair market value

WE THANK YOU FOR YOUR GENEROSITY

Donations can be made payable to: RECLAMATION CENTER Mail Stop 100700 P.O. Box 953745 St. Louis, Mo. 63195-3745

4/24/2024

Page 21 of 24

Identification 6369
Category Chalice
Description Knight Chalice
Size Large
Material Metal
Color Gold
Condition 10

Lowest to Highest (1= poor, 10 = Excellent)



Free will donation, commensurate to fair market value

Identification 6370
Category Chalice
Description Chalice
Size Medium
Material Metal
Color Gold
Condition 8

Lowest to Highest (1= poor, 10 = Excellent)



Free will donation, commensurate to fair market value

Identification 6371
Category Chalice
Description Chalice
Size Medium
Material Metal
Color Gold
Condition 9

Lowest to Highest (1= poor, 10 = Excellent)



Free will donation, commensurate to fair market value

Identification 6372
Category Chalice
Description Chalice
Size Medium
Material Metal
Color Gold
Condition 8

Lowest to Highest (1= poor, 10 = Excellent)



Free will donation, commensurate to fair market value

WE THANK YOU FOR YOUR GENEROSITY

Donations can be made payable to: RECLAMATION CENTER Mail Stop 100700 P.O. Box 953745 St. Louis, Mo. 63195-3745

4/24/2024

Page 22 of 24

Identification 6373
Category Chalice
Description Chalice
Size Medium
Material Metal
Color Gold
Condition 9

Lowest to Highest (1= poor, 10 = Excellent)



Free will donation, commensurate to fair market value

Identification 6374
Category Chalice
Description Chalice
Size Large
Material Metal
Color Gold
Condition 9

Lowest to Highest (1= poor, 10 = Excellent)



Free will donation, commensurate to fair market value

Identification 6375
Category Chalice
Description Chalice
Size Medium
Material Metal
Color Gold
Condition 10

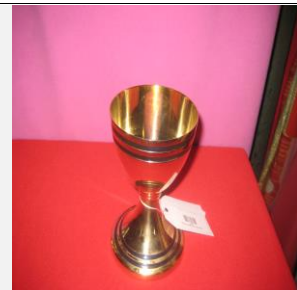
Lowest to Highest (1= poor, 10 = Excellent)



Free will donation, commensurate to fair market value

Identification 6376
Category Chalice
Description Chalice
Size Large
Material Metal
Color Gold
Condition 9

Lowest to Highest (1= poor, 10 = Excellent)



Free will donation, commensurate to fair market value

WE THANK YOU FOR YOUR GENEROSITY

Donations can be made payable to: RECLAMATION CENTER Mail Stop 100700 P.O. Box 953745 St. Louis, Mo. 63195-3745

4/24/2024

Page 23 of 24

Identification 6378
Category Chalice
Description Knight Chalice
Size Large
Material Metal
Color Gold
Condition 9

Lowest to Highest (1= poor, 10 = Excellent)



Free will donation, commensurate to fair market value

WE THANK YOU FOR YOUR GENEROSITY

Donations can be made payable to: RECLAMATION CENTER Mail Stop 100700 P.O. Box 953745 St. Louis, Mo. 63195-3745

4/24/2024

Page 24 of 24