

**Archdiocese of St. Louis
The Reclamation Center
Item Catalog**

Category Candle Holder

Identification 408

Category Candle Holder

Description Candle Holder

Size 1/2" x 6"

Material Metal

Color Silver

Condition 8 *Lowest to Highest (1= poor, 10 = Excellent)*



Free will donation, commensurate to fair market value

Identification 415

Category Candle Holder

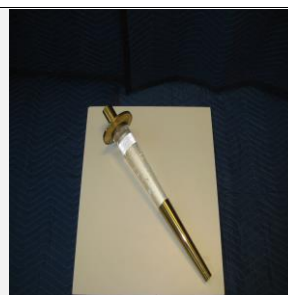
Description Candle Holder

Size 17"

Material Brass

Color Brass

Condition 8 *Lowest to Highest (1= poor, 10 = Excellent)*



Free will donation, commensurate to fair market value

Identification 874

Category Candle Holder

Description Candle Holder

Size 61"x18"x18"

Material Brass

Color Brass

Condition 7 *Lowest to Highest (1= poor, 10 = Excellent)*



Free will donation, commensurate to fair market value

Identification 1224

Category Candle Holder

Description Candle Holder

Size 60"x15"x15"

Material Brass

Color Brass

Condition 9 *Lowest to Highest (1= poor, 10 = Excellent)*

Free will donation, commensurate to fair market value

WE THANK YOU FOR YOUR GENEROSITY

Donations can be made payable to: RECLAMATION CENTER Mail Stop 100700 P.O. Box 953745 St. Louis, Mo. 63195-3745

5/1/2024

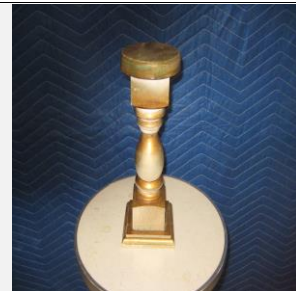
Page 1 of 10

Identification 1285
Category Candle Holder
Description Candle Holder set
Size 13 1/2" x 9 1/2" x 5"
Material Metal
Color Brass
Condition 8 *Lowest to Highest (1= poor, 10 = Excellent)*



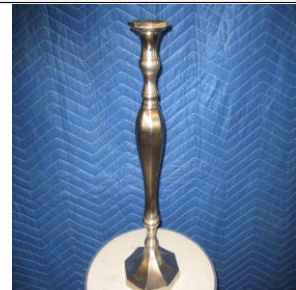
Free will donation, commensurate to fair market value

Identification 1286
Category Candle Holder
Description Candle Holder
Size 10 1/2" x 4"
Material Wood
Color Gold
Condition 7 *Lowest to Highest (1= poor, 10 = Excellent)*



Free will donation, commensurate to fair market value

Identification 1288
Category Candle Holder
Description Candle Holder
Size 5" x 17"
Material Metal
Color Silver
Condition 9 *Lowest to Highest (1= poor, 10 = Excellent)*



Free will donation, commensurate to fair market value

Identification 1296
Category Candle Holder
Description Candle Holder
Size 7" x 10 1/2"
Material Metal
Color Brass
Condition 9 *Lowest to Highest (1= poor, 10 = Excellent)*



Free will donation, commensurate to fair market value

WE THANK YOU FOR YOUR GENEROSITY

Donations can be made payable to: RECLAMATION CENTER Mail Stop 100700 P.O. Box 953745 St. Louis, Mo. 63195-3745

5/1/2024

Page 2 of 10

Identification 1364
Category Candle Holder
Description Candle Holder
Size 3"
Material Glass
Color Clear
Condition 8 *Lowest to Highest (1= poor, 10 = Excellent)*



Free will donation, commensurate to fair market value

Identification 1640
Category Candle Holder
Description Candle Holder
Size 4" x 4"
Material Glass
Color Clear
Condition 10 *Lowest to Highest (1= poor, 10 = Excellent)*



Free will donation, commensurate to fair market value

Identification 1780
Category Candle Holder
Description Candle Holder
Size 42: 8"
Material Metal
Color Silver
Condition 9 *Lowest to Highest (1= poor, 10 = Excellent)*



Free will donation, commensurate to fair market value

Identification 2078
Category Candle Holder
Description Candle Holder
Size 43"x 7 1/2"
Material Brass/Wood
Color Brass/Wood
Condition 9 *Lowest to Highest (1= poor, 10 = Excellent)*



Free will donation, commensurate to fair market value

WE THANK YOU FOR YOUR GENEROSITY

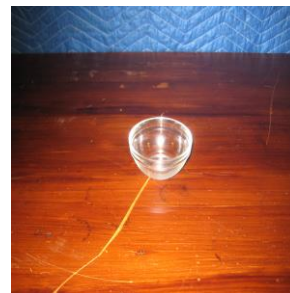
Donations can be made payable to: RECLAMATION CENTER Mail Stop 100700 P.O. Box 953745 St. Louis, Mo. 63195-3745

5/1/2024

Page 3 of 10

Identification 2131
Category Candle Holder
Description Candle Holder
Size Small
Material Glass
Color Clear
Condition 9

Lowest to Highest (1= poor, 10 = Excellent)



Free will donation, commensurate to fair market value

Identification 2313
Category Candle Holder
Description Candle Holder
Size 52"
Material Metal
Color Gold
Condition 8

Lowest to Highest (1= poor, 10 = Excellent)



Free will donation, commensurate to fair market value

Identification 2314
Category Candle Holder
Description Candle Holder
Size 43"
Material Metal
Color Gold
Condition 8

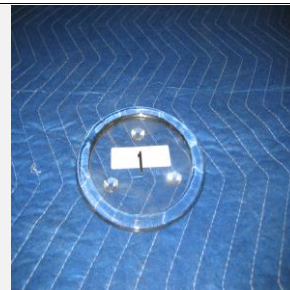
Lowest to Highest (1= poor, 10 = Excellent)



Free will donation, commensurate to fair market value

Identification 2334
Category Candle Holder
Description Candle Holder
Size 5 1/2"
Material Glass
Color Clear
Condition 10

Lowest to Highest (1= poor, 10 = Excellent)



Free will donation, commensurate to fair market value

WE THANK YOU FOR YOUR GENEROSITY

Donations can be made payable to: RECLAMATION CENTER Mail Stop 100700 P.O. Box 953745 St. Louis, Mo. 63195-3745

5/1/2024

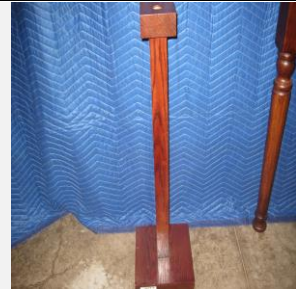
Page 4 of 10

Identification 2872
Category Candle Holder
Description Candle Holder
Size 14" x 2 1/2"
Material Metal
Color Gold
Condition 9 *Lowest to Highest (1= poor, 10 = Excellent)*



Free will donation, commensurate to fair market value

Identification 2985
Category Candle Holder
Description Candle Holder
Size 34" x 10"
Material Wood
Color Brown
Condition 7 *Lowest to Highest (1= poor, 10 = Excellent)*



Free will donation, commensurate to fair market value

Identification 2987
Category Candle Holder
Description Candle Holder
Size 36"
Material Wood
Color Brass
Condition 10 *Lowest to Highest (1= poor, 10 = Excellent)*



Free will donation, commensurate to fair market value

Identification 3221
Category Candle Holder
Description Candle Holder
Size 18" x 4"
Material Metal
Color Gold/Silver
Condition 10 *Lowest to Highest (1= poor, 10 = Excellent)*



Free will donation, commensurate to fair market value

WE THANK YOU FOR YOUR GENEROSITY

Donations can be made payable to: RECLAMATION CENTER Mail Stop 100700 P.O. Box 953745 St. Louis, Mo. 63195-3745

5/1/2024

Page 5 of 10

Identification 3569
Category Candle Holder
Description Candle Holder
Size 5" x 13"
Material Metal
Color Silver
Condition 9 *Lowest to Highest (1= poor, 10 = Excellent)*



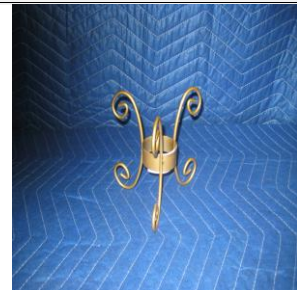
Free will donation, commensurate to fair market value

Identification 3640
Category Candle Holder
Description Candle Holder
Size 4 1/4"
Material Glass
Color Clear
Condition 10 *Lowest to Highest (1= poor, 10 = Excellent)*



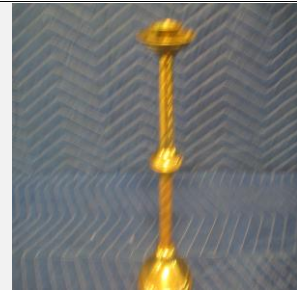
Free will donation, commensurate to fair market value

Identification 3819
Category Candle Holder
Description Candle Holder
Size 5 1/2"
Material Metal
Color Gold
Condition 8 *Lowest to Highest (1= poor, 10 = Excellent)*



Free will donation, commensurate to fair market value

Identification 4166
Category Candle Holder
Description Candle Holder
Size 11"
Material Metal
Color Brass
Condition 8 *Lowest to Highest (1= poor, 10 = Excellent)*



Free will donation, commensurate to fair market value

WE THANK YOU FOR YOUR GENEROSITY

Donations can be made payable to: RECLAMATION CENTER Mail Stop 100700 P.O. Box 953745 St. Louis, Mo. 63195-3745

5/1/2024

Page 6 of 10

Identification 4315
Category Candle Holder
Description Candle Holder
Size
Material Metal
Color Brass
Condition 7

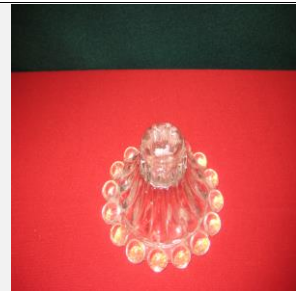
Lowest to Highest (1= poor, 10 = Excellent)



Free will donation, commensurate to fair market value

Identification 4682
Category Candle Holder
Description Candle Holder
Size 4 1/2"
Material Glass
Color Clear
Condition 10

Lowest to Highest (1= poor, 10 = Excellent)



Free will donation, commensurate to fair market value

Identification 5142
Category Candle Holder
Description Candle Holder
Size 48 1/2"
Material Metal
Color Brass
Condition 7

Lowest to Highest (1= poor, 10 = Excellent)



Free will donation, commensurate to fair market value

Identification 5299
Category Candle Holder
Description Candle Holder
Size 4"
Material Glass
Color Clear
Condition 10

Lowest to Highest (1= poor, 10 = Excellent)



Free will donation, commensurate to fair market value

WE THANK YOU FOR YOUR GENEROSITY

Donations can be made payable to: RECLAMATION CENTER Mail Stop 100700 P.O. Box 953745 St. Louis, Mo. 63195-3745

5/1/2024

Page 7 of 10

Identification 5401
Category Candle Holder
Description Candle Holder
Size 46"
Material
Color
Condition 9 *Lowest to Highest (1= poor, 10 = Excellent)*



Free will donation, commensurate to fair market value

Identification 5447
Category Candle Holder
Description Candle Holder
Size 4 3/4"
Material Metal
Color Gold
Condition 8 *Lowest to Highest (1= poor, 10 = Excellent)*



Free will donation, commensurate to fair market value

Identification 5589
Category Candle Holder
Description Candle Holder
Size 60"
Material Metal
Color Brass
Condition 10 *Lowest to Highest (1= poor, 10 = Excellent)*



Free will donation, commensurate to fair market value

Identification 5590
Category Candle Holder
Description Candle Holder
Size 48"
Material Metal
Color Brass
Condition 10 *Lowest to Highest (1= poor, 10 = Excellent)*



Free will donation, commensurate to fair market value

WE THANK YOU FOR YOUR GENEROSITY

Donations can be made payable to: RECLAMATION CENTER Mail Stop 100700 P.O. Box 953745 St. Louis, Mo. 63195-3745

5/1/2024

Page 8 of 10

Identification 5591
Category Candle Holder
Description Candle Holder
Size 47"
Material Metal
Color Brass
Condition 10 *Lowest to Highest (1= poor, 10 = Excellent)*



Free will donation, commensurate to fair market value

Identification 5611
Category Candle Holder
Description Candle Holder
Size 6" x 4"
Material Wood
Color Brown
Condition 10 *Lowest to Highest (1= poor, 10 = Excellent)*



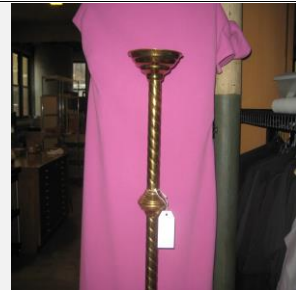
Free will donation, commensurate to fair market value

Identification 6039
Category Candle Holder
Description Candle Holder
Size 35 1/4"
Material Metal
Color Gold
Condition 7 *Lowest to Highest (1= poor, 10 = Excellent)*



Free will donation, commensurate to fair market value

Identification 6040
Category Candle Holder
Description Candle Holder
Size 30"
Material Metal
Color Gold
Condition 8 *Lowest to Highest (1= poor, 10 = Excellent)*



Free will donation, commensurate to fair market value

WE THANK YOU FOR YOUR GENEROSITY

Donations can be made payable to: RECLAMATION CENTER Mail Stop 100700 P.O. Box 953745 St. Louis, Mo. 63195-3745

5/1/2024

Page 9 of 10

Identification 6183
Category Candle Holder
Description Candle Holder
Size 6"
Material Metal
Color Gold
Condition 9

Lowest to Highest (1= poor, 10 = Excellent)



Free will donation, commensurate to fair market value

Identification 6323
Category Candle Holder
Description Candle Holder
Size 6"
Material Glass
Color Clear
Condition 10

Lowest to Highest (1= poor, 10 = Excellent)



Free will donation, commensurate to fair market value

WE THANK YOU FOR YOUR GENEROSITY

Donations can be made payable to: RECLAMATION CENTER Mail Stop 100700 P.O. Box 953745 St. Louis, Mo. 63195-3745
 5/1/2024 Page 10 of 10