



**Archdiocese of St. Louis**  
**Reclamation Center**  
**Catalog Category**

**Category** Candle Holder

**Identification** 375  
**Category** Candle Holder  
**Description** Candle Holder  
**Size** 1 1/2" x 4"  
**Material** Brass  
**Color** Brass  
**Condition** 8 *Lowest to Highest (1= poor, 10 = Excellent)*  
**Item Value** *Free will donation, commensurate to fair market value*



**Identification** 408  
**Category** Candle Holder  
**Description** Candle Holder  
**Size** 1/2" x 6"  
**Material** Metal  
**Color** Silver  
**Condition** 8 *Lowest to Highest (1= poor, 10 = Excellent)*  
**Item Value** *Free will donation, commensurate to fair market value*



**Identification** 415  
**Category** Candle Holder  
**Description** Candle Holder  
**Size** 17"  
**Material** Brass  
**Color** Brass  
**Condition** 8 *Lowest to Highest (1= poor, 10 = Excellent)*  
**Item Value** *Free will donation, commensurate to fair market value*



**Identification** 873  
**Category** Candle Holder  
**Description** Candle Holder  
**Size** 56"x12"x12"  
**Material** Brass  
**Color** Mixed Color  
**Condition** 9 *Lowest to Highest (1= poor, 10 = Excellent)*  
**Item Value** *Free will donation, commensurate to fair market value*



**Identification** 874  
**Category** Candle Holder  
**Description** Candle Holder  
**Size** 61"x18"x18"  
**Material** Brass  
**Color** Brass  
**Condition** 7 *Lowest to Highest (1= poor, 10 = Excellent)*  
**Item Value** *Free will donation, commensurate to fair market value*

WE THANK YOU FOR YOUR GENEROSITY

Donations can be made payable to: RECLAMATION CENTER Mail Stop 100700 P.O. Box 953745 St. Louis, Mo. 63195-3745

**Identification** 1190  
**Category** Candle Holder  
**Description** Candle Holder  
**Size** 19" x 5"  
**Material** Brass  
**Color** Brass  
**Condition** 9 *Lowest to Highest (1= poor, 10 = Excellent)*  
**Item Value** *Free will donation, commensurate to fair market value*

---



**Identification** 1224  
**Category** Candle Holder  
**Description** Candle Holder  
**Size** 60"x15"x15"  
**Material** Brass  
**Color** Brass  
**Condition** 9 *Lowest to Highest (1= poor, 10 = Excellent)*  
**Item Value** *Free will donation, commensurate to fair market value*

---



**Identification** 1285  
**Category** Candle Holder  
**Description** Candle Holder set  
**Size** 13 1/2" x 9 1/2" x 5"  
**Material** Metal  
**Color** Brass  
**Condition** 8 *Lowest to Highest (1= poor, 10 = Excellent)*  
**Item Value** *Free will donation, commensurate to fair market value*

---



**Identification** 1286  
**Category** Candle Holder  
**Description** Candle Holder  
**Size** 10 1/2" x 4"  
**Material** Wood  
**Color** Gold  
**Condition** 7 *Lowest to Highest (1= poor, 10 = Excellent)*  
**Item Value** *Free will donation, commensurate to fair market value*

---



**Identification** 1288  
**Category** Candle Holder  
**Description** Candle Holder  
**Size** 5" x 17"  
**Material** Metal  
**Color** Silver  
**Condition** 9 *Lowest to Highest (1= poor, 10 = Excellent)*  
**Item Value** *Free will donation, commensurate to fair market value*

---



**Identification** 1291  
**Category** Candle Holder  
**Description** Candle Holder  
**Size** 6 1/2" x 4"  
**Material** Metal  
**Color** Silver  
**Condition** 10 *Lowest to Highest (1= poor, 10 = Excellent)*  
**Item Value** *Free will donation, commensurate to fair market value*

---



WE THANK YOU FOR YOUR GENEROSITY

Donations can be made payable to: RECLAMATION CENTER Mail Stop 100700 P.O. Box 953745 St. Louis, Mo. 63195-3745

**Identification** 1294  
**Category** Candle Holder  
**Description** Candle Holder  
**Size** 2 3/4" x 1/2"  
**Material** Wood  
**Color** Brown  
**Condition** 10 *Lowest to Highest (1= poor, 10 = Excellent)*  
**Item Value** *Free will donation, commensurate to fair market value*

---



**Identification** 1295  
**Category** Candle Holder  
**Description** Candle Holder  
**Size** 6" x 6"  
**Material** Metal  
**Color** Brown  
**Condition** 8 *Lowest to Highest (1= poor, 10 = Excellent)*  
**Item Value** *Free will donation, commensurate to fair market value*

---



**Identification** 1296  
**Category** Candle Holder  
**Description** Candle Holder  
**Size** 7" x 10 1/2"  
**Material** Metal  
**Color** Brass  
**Condition** 9 *Lowest to Highest (1= poor, 10 = Excellent)*  
**Item Value** *Free will donation, commensurate to fair market value*

---



**Identification** 1316  
**Category** Candle Holder  
**Description** Candle Holder  
**Size** 3 1/2" x 2 1/2"  
**Material** Metal  
**Color** Gold  
**Condition** 10 *Lowest to Highest (1= poor, 10 = Excellent)*  
**Item Value** *Free will donation, commensurate to fair market value*

---



**Identification** 1317  
**Category** Candle Holder  
**Description** Candle Holder  
**Size** 4 1/2" x 3"  
**Material** Metal  
**Color** Gold  
**Condition** 10 *Lowest to Highest (1= poor, 10 = Excellent)*  
**Item Value** *Free will donation, commensurate to fair market value*

---



**Identification** 1347  
**Category** Candle Holder  
**Description** Candle Holder  
**Size** 16" x 7"  
**Material** Metal  
**Color** Gold  
**Condition** 7 *Lowest to Highest (1= poor, 10 = Excellent)*  
**Item Value** *Free will donation, commensurate to fair market value*

---



WE THANK YOU FOR YOUR GENEROSITY

Donations can be made payable to: RECLAMATION CENTER Mail Stop 100700 P.O. Box 953745 St. Louis, Mo. 63195-3745

**Identification** 1366  
**Category** Candle Holder  
**Description** Candle Holder  
**Size** 3" x 3"  
**Material** Glass  
**Color** Clear  
**Condition** 10 *Lowest to Highest (1= poor, 10 = Excellent)*  
**Item Value** *Free will donation, commensurate to fair market value*



**Identification** 1467  
**Category** Candle Holder  
**Description** Candle Holder  
**Size**  
**Material** Glass  
**Color** Clear  
**Condition** 10 *Lowest to Highest (1= poor, 10 = Excellent)*  
**Item Value** *Free will donation, commensurate to fair market value*



**Identification** 1608  
**Category** Candle Holder  
**Description** Candle Holder  
**Size** 6" x 3"  
**Material** Metal  
**Color** Brass  
**Condition** 8 *Lowest to Highest (1= poor, 10 = Excellent)*  
**Item Value** *Free will donation, commensurate to fair market value*



**Identification** 1609  
**Category** Candle Holder  
**Description** Candle Holder  
**Size** 5" x 3"  
**Material** Metal  
**Color** Brass  
**Condition** 8 *Lowest to Highest (1= poor, 10 = Excellent)*  
**Item Value** *Free will donation, commensurate to fair market value*



**Identification** 1633  
**Category** Candle Holder  
**Description** Candle Holder  
**Size** 11" x 4 1/2"  
**Material** Metal  
**Color** Gold  
**Condition** 8 *Lowest to Highest (1= poor, 10 = Excellent)*  
**Item Value** *Free will donation, commensurate to fair market value*



**Identification** 1640  
**Category** Candle Holder  
**Description** Candle Holder  
**Size** 4" x 4"  
**Material** Glass  
**Color** Clear  
**Condition** 10 *Lowest to Highest (1= poor, 10 = Excellent)*  
**Item Value** *Free will donation, commensurate to fair market value*



WE THANK YOU FOR YOUR GENEROSITY

Donations can be made payable to: RECLAMATION CENTER Mail Stop 100700 P.O. Box 953745 St. Louis, Mo. 63195-3745

**Identification** 1780  
**Category** Candle Holder  
**Description** Candle Holder  
**Size** 42: 8"  
**Material** Metal  
**Color** Silver  
**Condition** 9 *Lowest to Highest (1= poor, 10 = Excellent)*  
**Item Value** *Free will donation, commensurate to fair market value*

---



**Identification** 1967  
**Category** Candle Holder  
**Description** Candle Holder Set  
**Size** 6" x 3"  
**Material** Metal  
**Color** Gold  
**Condition** 8 *Lowest to Highest (1= poor, 10 = Excellent)*  
**Item Value** *Free will donation, commensurate to fair market value*

---



**Identification** 2078  
**Category** Candle Holder  
**Description** Candle Holder  
**Size** 43" x 7 1/2"  
**Material** Brass/Wood  
**Color** Brass/Wood  
**Condition** 9 *Lowest to Highest (1= poor, 10 = Excellent)*  
**Item Value** *Free will donation, commensurate to fair market value*

---



**Identification** 2313  
**Category** Candle Holder  
**Description** Candle Holder  
**Size** 52"  
**Material** Metal  
**Color** Gold  
**Condition** 8 *Lowest to Highest (1= poor, 10 = Excellent)*  
**Item Value** *Free will donation, commensurate to fair market value*

---



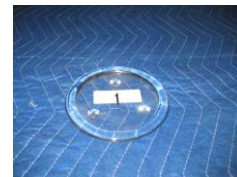
**Identification** 2314  
**Category** Candle Holder  
**Description** Candle Holder  
**Size** 43"  
**Material** Metal  
**Color** Gold  
**Condition** 8 *Lowest to Highest (1= poor, 10 = Excellent)*  
**Item Value** *Free will donation, commensurate to fair market value*

---



**Identification** 2334  
**Category** Candle Holder  
**Description** Candle Holder  
**Size** 5 1/2"  
**Material** Glass  
**Color** Clear  
**Condition** 10 *Lowest to Highest (1= poor, 10 = Excellent)*  
**Item Value** *Free will donation, commensurate to fair market value*

---



WE THANK YOU FOR YOUR GENEROSITY

Donations can be made payable to: RECLAMATION CENTER Mail Stop 100700 P.O. Box 953745 St. Louis, Mo. 63195-3745

**Identification** 2871  
**Category** Candle Holder  
**Description** Candle Holder  
**Size** 3 1/2" x 2 1/2"  
**Material** Metal  
**Color** Gold  
**Condition** 9 *Lowest to Highest (1= poor, 10 = Excellent)*  
**Item Value** *Free will donation, commensurate to fair market value*

---



**Identification** 2872  
**Category** Candle Holder  
**Description** Candle Holder  
**Size** 14" x 2 1/2"  
**Material** Metal  
**Color** Gold  
**Condition** 9 *Lowest to Highest (1= poor, 10 = Excellent)*  
**Item Value** *Free will donation, commensurate to fair market value*

---



**Identification** 2983  
**Category** Candle Holder  
**Description** Candle Holder  
**Size** 44" x 10"  
**Material** Wood  
**Color** Brown  
**Condition** 7 *Lowest to Highest (1= poor, 10 = Excellent)*  
**Item Value** *Free will donation, commensurate to fair market value*

---



**Identification** 2984  
**Category** Candle Holder  
**Description** Candle Holder  
**Size** 43" x 10"  
**Material** Wood  
**Color** Brown  
**Condition** 7 *Lowest to Highest (1= poor, 10 = Excellent)*  
**Item Value** *Free will donation, commensurate to fair market value*

---



**Identification** 2985  
**Category** Candle Holder  
**Description** Candle Holder  
**Size** 34" x 10"  
**Material** Wood  
**Color** Brown  
**Condition** 7 *Lowest to Highest (1= poor, 10 = Excellent)*  
**Item Value** *Free will donation, commensurate to fair market value*

---



**Identification** 2986  
**Category** Candle Holder  
**Description** Candle Holder  
**Size** 39" x 10"  
**Material** Wood  
**Color** Brown  
**Condition** 7 *Lowest to Highest (1= poor, 10 = Excellent)*  
**Item Value** *Free will donation, commensurate to fair market value*

---



WE THANK YOU FOR YOUR GENEROSITY

Donations can be made payable to: RECLAMATION CENTER Mail Stop 100700 P.O. Box 953745 St. Louis, Mo. 63195-3745

**Identification** 2987  
**Category** Candle Holder  
**Description** Candle Holder  
**Size** 36"  
**Material** Wood  
**Color** Brass  
**Condition** 10 *Lowest to Highest (1= poor, 10 = Excellent)*  
**Item Value** *Free will donation, commensurate to fair market value*

---



**Identification** 3155  
**Category** Candle Holder  
**Description** Candle Holder  
**Size** 11" x 3 1/2"  
**Material** Metal  
**Color** Gold  
**Condition** 9 *Lowest to Highest (1= poor, 10 = Excellent)*  
**Item Value** *Free will donation, commensurate to fair market value*

---



**Identification** 3156  
**Category** Candle Holder  
**Description** Candle Holder  
**Size** 18" x 6 1/2"  
**Material** Metal  
**Color** Gold  
**Condition** 7 *Lowest to Highest (1= poor, 10 = Excellent)*  
**Item Value** *Free will donation, commensurate to fair market value*

---



**Identification** 3157  
**Category** Candle Holder  
**Description** Candle Holder  
**Size** 21" x 5 1/2"  
**Material** Metal  
**Color** Gold  
**Condition** 4 *Lowest to Highest (1= poor, 10 = Excellent)*  
**Item Value** *Free will donation, commensurate to fair market value*

---



**Identification** 3159  
**Category** Candle Holder  
**Description** Candle Holder  
**Size** 23 1/2" x 6"  
**Material** Metal  
**Color** Gold  
**Condition** 8 *Lowest to Highest (1= poor, 10 = Excellent)*  
**Item Value** *Free will donation, commensurate to fair market value*

---



**Identification** 3207  
**Category** Candle Holder  
**Description** Candle Holder  
**Size** 2" x 1"  
**Material** Metal  
**Color** Brass  
**Condition** 7 *Lowest to Highest (1= poor, 10 = Excellent)*  
**Item Value** *Free will donation, commensurate to fair market value*

---



WE THANK YOU FOR YOUR GENEROSITY

Donations can be made payable to: RECLAMATION CENTER Mail Stop 100700 P.O. Box 953745 St. Louis, Mo. 63195-3745

**Identification** 3210  
**Category** Candle Holder  
**Description** Candle Holder  
**Size** 17" x 6"  
**Material** Metal  
**Color** Brass  
**Condition** 8 *Lowest to Highest (1= poor, 10 = Excellent)*  
**Item Value** *Free will donation, commensurate to fair market value*



**Identification** 3211  
**Category** Candle Holder  
**Description** Candle Holder  
**Size** 11 1/2" x 6"  
**Material** Metal  
**Color** Brass  
**Condition** 9 *Lowest to Highest (1= poor, 10 = Excellent)*  
**Item Value** *Free will donation, commensurate to fair market value*



**Identification** 3212  
**Category** Candle Holder  
**Description** Candle Holder  
**Size** 4" x 5"  
**Material** Metal  
**Color** Brass  
**Condition** 9 *Lowest to Highest (1= poor, 10 = Excellent)*  
**Item Value** *Free will donation, commensurate to fair market value*



**Identification** 3213  
**Category** Candle Holder  
**Description** Candle Holder  
**Size** 4 1/2" x 4 1/2"  
**Material** Metal  
**Color** Brass  
**Condition** 8 *Lowest to Highest (1= poor, 10 = Excellent)*  
**Item Value** *Free will donation, commensurate to fair market value*



**Identification** 3219  
**Category** Candle Holder  
**Description** Candle Holder  
**Size** 2 3/4" x 2 1/4"  
**Material** Plastic  
**Color** White  
**Condition** 10 *Lowest to Highest (1= poor, 10 = Excellent)*  
**Item Value** *Free will donation, commensurate to fair market value*



**Identification** 3221  
**Category** Candle Holder  
**Description** Candle Holder  
**Size** 18" x 4"  
**Material** Metal  
**Color** Gold/Silver  
**Condition** 10 *Lowest to Highest (1= poor, 10 = Excellent)*  
**Item Value** *Free will donation, commensurate to fair market value*



WE THANK YOU FOR YOUR GENEROSITY

Donations can be made payable to: RECLAMATION CENTER Mail Stop 100700 P.O. Box 953745 St. Louis, Mo. 63195-3745



**Identification** 3567  
**Category** Candle Holder  
**Description** Candle Holder  
**Size** 4" x 5"  
**Material** Metal  
**Color** Gold  
**Condition** 9 *Lowest to Highest (1= poor, 10 = Excellent)*  
**Item Value** *Free will donation, commensurate to fair market value*



**Identification** 3568  
**Category** Candle Holder  
**Description** Candle Holder  
**Size** 6" x 14"  
**Material** Metal  
**Color** Gold  
**Condition** 7 *Lowest to Highest (1= poor, 10 = Excellent)*  
**Item Value** *Free will donation, commensurate to fair market value*



**Identification** 3569  
**Category** Candle Holder  
**Description** Candle Holder  
**Size** 5" x 13"  
**Material** Metal  
**Color** Silver  
**Condition** 9 *Lowest to Highest (1= poor, 10 = Excellent)*  
**Item Value** *Free will donation, commensurate to fair market value*



**Identification** 3570  
**Category** Candle Holder  
**Description** Candle Holder  
**Size** 4" x 3"  
**Material** Metal  
**Color** Gold  
**Condition** 8 *Lowest to Highest (1= poor, 10 = Excellent)*  
**Item Value** *Free will donation, commensurate to fair market value*

**Identification** 3587  
**Category** Candle Holder  
**Description** Candle Holder  
**Size** 6"  
**Material** Metal  
**Color** Silver  
**Condition** 9 *Lowest to Highest (1= poor, 10 = Excellent)*  
**Item Value** *Free will donation, commensurate to fair market value*



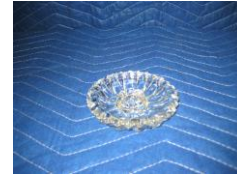
**Identification** 3602  
**Category** Candle Holder  
**Description** Candle Holder  
**Size** 5"  
**Material** Metal  
**Color** Brass  
**Condition** 9 *Lowest to Highest (1= poor, 10 = Excellent)*  
**Item Value** *Free will donation, commensurate to fair market value*



WE THANK YOU FOR YOUR GENEROSITY

Donations can be made payable to: RECLAMATION CENTER Mail Stop 100700 P.O. Box 953745 St. Louis, Mo. 63195-3745

**Identification** 3640  
**Category** Candle Holder  
**Description** Candle Holder  
**Size** 4 1/4"  
**Material** Glass  
**Color** Clear  
**Condition** 10 *Lowest to Highest (1= poor, 10 = Excellent)*  
**Item Value** *Free will donation, commensurate to fair market value*



**Identification** 3663  
**Category** Candle Holder  
**Description** Candle Stick set  
**Size** 8" and 6"  
**Material** Metal  
**Color** Silver  
**Condition** 8 *Lowest to Highest (1= poor, 10 = Excellent)*  
**Item Value** *Free will donation, commensurate to fair market value*



**Identification** 3664  
**Category** Candle Holder  
**Description** Candle Stick Holder  
**Size** 4"  
**Material** Metal  
**Color** Silver  
**Condition** 9 *Lowest to Highest (1= poor, 10 = Excellent)*  
**Item Value** *Free will donation, commensurate to fair market value*



**Identification** 3819  
**Category** Candle Holder  
**Description** Candle Holder  
**Size** 5 1/2"  
**Material** Metal  
**Color** Gold  
**Condition** 8 *Lowest to Highest (1= poor, 10 = Excellent)*  
**Item Value** *Free will donation, commensurate to fair market value*



**Identification** 3821  
**Category** Candle Holder  
**Description** Candle Holder  
**Size** 4" x 10"  
**Material** Metal  
**Color** Brass  
**Condition** 9 *Lowest to Highest (1= poor, 10 = Excellent)*  
**Item Value** *Free will donation, commensurate to fair market value*



**Identification** 3822  
**Category** Candle Holder  
**Description** Candle Holder  
**Size** 7" x 18"  
**Material** Metal  
**Color** Gold  
**Condition** 8 *Lowest to Highest (1= poor, 10 = Excellent)*  
**Item Value** *Free will donation, commensurate to fair market value*



WE THANK YOU FOR YOUR GENEROSITY

Donations can be made payable to: RECLAMATION CENTER Mail Stop 100700 P.O. Box 953745 St. Louis, Mo. 63195-3745

**Identification** 4166  
**Category** Candle Holder  
**Description** Candle Holder  
**Size** 11"  
**Material** Metal  
**Color** Brass  
**Condition** 8 *Lowest to Highest (1= poor, 10 = Excellent)*  
**Item Value** *Free will donation, commensurate to fair market value*

---

**Identification** 4167  
**Category** Candle Holder  
**Description** Candle Holder  
**Size** 5"  
**Material** Glass  
**Color** Clear  
**Condition** 9 *Lowest to Highest (1= poor, 10 = Excellent)*  
**Item Value** *Free will donation, commensurate to fair market value*

---

**Identification** 4169  
**Category** Candle Holder  
**Description** Candle Holder  
**Size** 23"  
**Material** Metal  
**Color** Gold  
**Condition** 7 *Lowest to Highest (1= poor, 10 = Excellent)*  
**Item Value** *Free will donation, commensurate to fair market value*

---

**Identification** 4315  
**Category** Candle Holder  
**Description** Candle Holder  
**Size**  
**Material** Metal  
**Color** Brass  
**Condition** 7 *Lowest to Highest (1= poor, 10 = Excellent)*  
**Item Value** *Free will donation, commensurate to fair market value*

---

**Identification** 4316  
**Category** Candle Holder  
**Description** Candle Holder  
**Size** 2" x 2"  
**Material** Metal  
**Color** Brass  
**Condition** 7 *Lowest to Highest (1= poor, 10 = Excellent)*  
**Item Value** *Free will donation, commensurate to fair market value*

---

**Identification** 4317  
**Category** Candle Holder  
**Description** Candle Holder  
**Size** 2" x 3"  
**Material** Metal  
**Color** Brass  
**Condition** 7 *Lowest to Highest (1= poor, 10 = Excellent)*  
**Item Value** *Free will donation, commensurate to fair market value*

---

WE THANK YOU FOR YOUR GENEROSITY

Donations can be made payable to: RECLAMATION CENTER Mail Stop 100700 P.O. Box 953745 St. Louis, Mo. 63195-3745

**Identification** 4318  
**Category** Candle Holder  
**Description** Candle Holder  
**Size** 2" x 2 1/2"  
**Material** Metal  
**Color** Gold  
**Condition** 8 *Lowest to Highest (1= poor, 10 = Excellent)*  
**Item Value** *Free will donation, commensurate to fair market value*

---

**Identification** 5063  
**Category** Candle Holder  
**Description** Candle Holder w/candle  
**Size** 29 1/2" x 6"  
**Material** Metal  
**Color** Brass  
**Condition** 9 *Lowest to Highest (1= poor, 10 = Excellent)*  
**Item Value** *Free will donation, commensurate to fair market value*

---

**Identification** 5064  
**Category** Candle Holder  
**Description** Candle Holder  
**Size** 18 1/2" 6"  
**Material** Metal  
**Color** Brass  
**Condition** 9 *Lowest to Highest (1= poor, 10 = Excellent)*  
**Item Value** *Free will donation, commensurate to fair market value*

---

WE THANK YOU FOR YOUR GENEROSITY

Donations can be made payable to: RECLAMATION CENTER Mail Stop 100700 P.O. Box 953745 St. Louis, Mo. 63195-3745